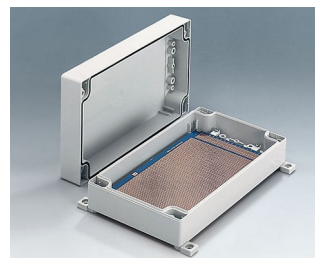
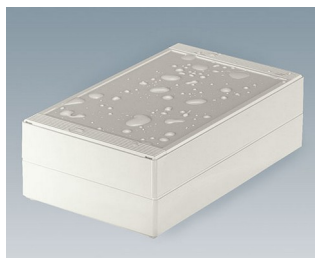
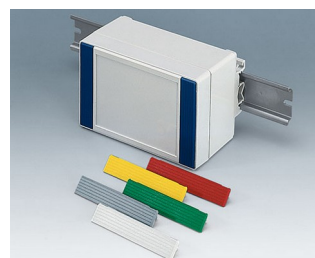
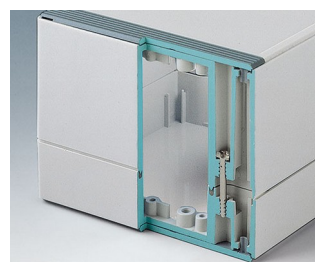


# ROBUST-BOX

## Duální systém pouzder v IP 66

V případě ROBUST-BOX jsou obě poloviny skříňě vybaveny předem vytvořenými závity. Zde se rozhodnete jako uživatel, zda má být plochá nebo vysoká část pouzdra použita jako spodní část.

- Robustní odrůda v 11 základních rozměrech, různých výškách a 2 standardních materiálech
- ABS (UL 94 HB), osvědčený jako pouzdro svorek
- PC (UL 94 HB), pevný a robustní kryt s vysokou teplotní odolností
- RF propustné materiály pouzder
- Lze použít jako skříň na plochu, stěnové pouzdro a DIN lišty
- Snadná instalace; jednotlivé obaly krytu, část pera a drážka mohou být použity jako horní / spodní část
- Vestavěný ovládací panel pro ochranu membránové klávesnice
- Krycí nástavec se nachází mimo těsnící oblast a provádí se pomocí nerezových šroubů
- Přímou montáž na stěnu nebo pomocí externích upevňovacích popruhů
- Varevné krycí proužky pro kódování (alternativa k standardním verzím ve světle šedé barvě)
- Upevňovací sloupky pro desky a zástavbu
- Rozsáhlé příslušenství: nohy skříňě, závěs, montáž na lištu DIN, držák karty pro montáž předem sestavených modulů atd.



# ROBUST-BOX

## Aplikace a příklady

Elektroinstalace, např. v oblasti topení, klimatizace a odvětrání jako řídicí a monitorovací zařízení, zabezpečení. Ale také v oblasti elektroniky, např. jako tlačítkové pouzdro, pro řídicí systémy, snímače atd.



Fill level measurement in process technology



Heating Control



Humidity and temperature measuring unit



Measuring, regulating and metering unit for water quality



Portable metal detector



Robust monitoring systems



Sensor for air pollution



Stationary gas detection system

## Přizpůsobení možností

Co ještě potřebujete pro svůj vlastní velmi osobní produkt? Můžeme dodat zapouzdření a ladící knoflíky se všemi nezbytnými úpravami pro montáž vašich elektronických součástí. Možnosti přizpůsobení pro Robust-Box



Mechanické opracování



Lakování



Tisk



Laserové značení



Dekorační fólie



Zakázkový materiál



Stínění EMC



Kompletace / Montáž

# ROBUST-BOX

## Vyberte verze



**C0080801**  
 Case shell 80, with groove  
 ABS (UL 94 HB)  
 light grey RAL 7035  
 80x80x20mm



**C0080802**  
 Case shell 80, with groove  
 PC (UL 94 HB)  
 light grey RAL 7035  
 80x80x20mm



**C0081201**  
 Case shell 80, with groove  
 ABS (UL 94 HB)  
 light grey RAL 7035  
 120x80x20mm



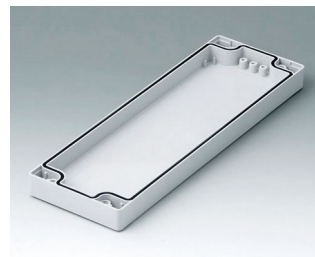
**C0081202**  
 Case shell 80, with groove  
 PC (UL 94 HB)  
 light grey RAL 7035  
 120x80x20mm



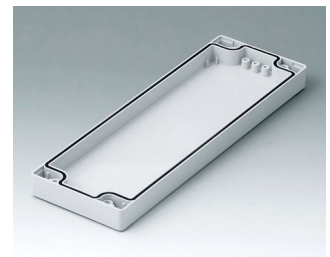
**C0081601**  
 Case shell 80, with groove  
 ABS (UL 94 HB)  
 light grey RAL 7035  
 160x80x20mm



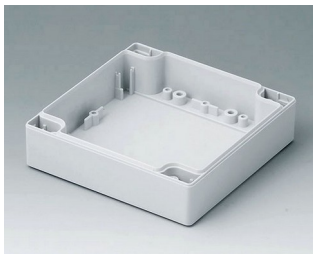
**C0081602**  
 Case shell 80, with groove  
 PC (UL 94 HB)  
 light grey RAL 7035  
 160x80x20mm



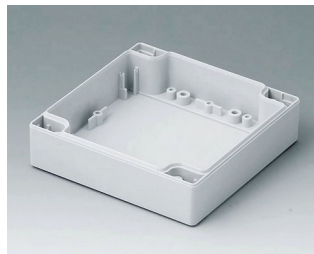
**C0082401**  
 Case shell 80, with groove  
 ABS (UL 94 HB)  
 light grey RAL 7035  
 240x80x20mm



**C0082402**  
 Case shell 80, with groove  
 PC (UL 94 HB)  
 light grey RAL 7035  
 240x80x20mm



**C0121201**  
 Case shell 120, with tongue  
 ABS (UL 94 HB)  
 light grey RAL 7035  
 120x120x30mm



**C0121202**  
 Case shell 120, with tongue  
 PC (UL 94 HB)  
 light grey RAL 7035  
 120x120x30mm



**C0122001**  
 Case shell 120, with tongue  
 ABS (UL 94 HB)  
 light grey RAL 7035  
 200x120x30mm



**C0122002**  
 Case shell 120, with tongue  
 PC (UL 94 HB)  
 light grey RAL 7035  
 200x120x30mm



**C0122401**  
 Case shell 120, with tongue  
 ABS (UL 94 HB)  
 light grey RAL 7035  
 240x120x30mm



**C0122402**  
 Case shell 120, with tongue  
 PC (UL 94 HB)  
 light grey RAL 7035  
 240x120x30mm



**C0161601**  
 Case shell 160, with tongue  
 ABS (UL 94 HB)  
 light grey RAL 7035  
 160x160x30mm



**C0161602**  
 Case shell 160, with tongue  
 PC (UL 94 HB)  
 light grey RAL 7035  
 160x160x30mm

# ROBUST-BOX



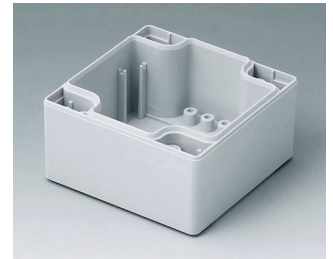
**C0162401**  
Case shell 160, with tongue  
ABS (UL 94 HB)  
light grey RAL 7035  
240x160x30mm



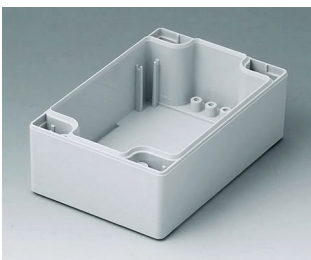
**C0162402**  
Case shell 160, with tongue  
PC (UL 94 HB)  
light grey RAL 7035  
240x160x30mm



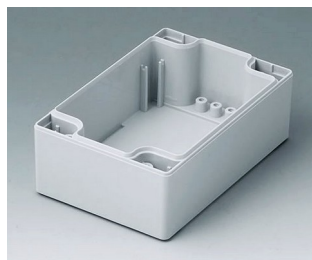
**C1080801**  
Case shell 80, with tongue  
ABS (UL 94 HB)  
light grey RAL 7035  
80x80x40mm



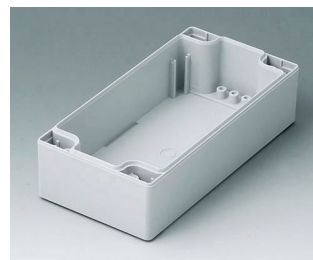
**C1080802**  
Case shell 80, with tongue  
PC (UL 94 HB)  
light grey RAL 7035  
80x80x40mm



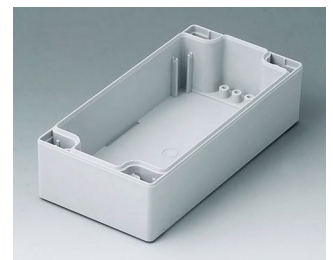
**C1081201**  
Case shell 80, with tongue  
ABS (UL 94 HB)  
light grey RAL 7035  
120x80x40mm



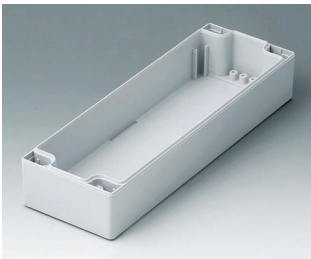
**C1081202**  
Case shell 80, with tongue  
PC (UL 94 HB)  
light grey RAL 7035  
120x80x40mm



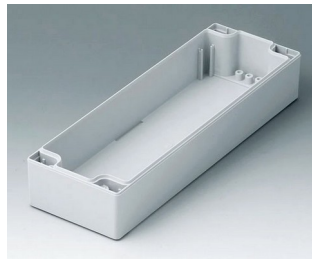
**C1081601**  
Case shell 80, with tongue  
ABS (UL 94 HB)  
light grey RAL 7035  
160x80x40mm



**C1081602**  
Case shell 80, with tongue  
PC (UL 94 HB)  
light grey RAL 7035  
160x80x40mm



**C1082401**  
Case shell 80, with tongue  
ABS (UL 94 HB)  
light grey RAL 7035  
240x80x40mm



**C1082402**  
Case shell 80, with tongue  
PC (UL 94 HB)  
light grey RAL 7035  
240x80x40mm



**C1121201**  
Case shell 120, with groove  
ABS (UL 94 HB)  
light grey RAL 7035  
120x120x30mm



**C1121202**  
Case shell 120, with groove  
PC (UL 94 HB)  
light grey RAL 7035  
120x120x30mm



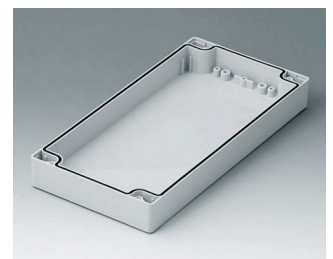
**C1122001**  
Case shell 120, with groove  
ABS (UL 94 HB)  
light grey RAL 7035  
200x120x30mm



**C1122002**  
Case shell 120, with groove  
PC (UL 94 HB)  
light grey RAL 7035  
200x120x30mm



**C1122401**  
Case shell 120, with groove  
ABS (UL 94 HB)  
light grey RAL 7035  
240x120x30mm



**C1122402**  
Case shell 120, with groove  
PC (UL 94 HB)  
light grey RAL 7035  
240x120x30mm

# ROBUST-BOX



**C1161601**  
Case shell 160, with groove  
ABS (UL 94 HB)  
light grey RAL 7035  
160x160x30mm



**C1161602**  
Case shell 160, with groove  
PC (UL 94 HB)  
light grey RAL 7035  
160x160x30mm



**C1162401**  
Case shell 160, with groove  
ABS (UL 94 HB)  
light grey RAL 7035  
240x160x30mm



**C1162402**  
Case shell 160, with groove  
PC (UL 94 HB)  
light grey RAL 7035  
240x160x30mm



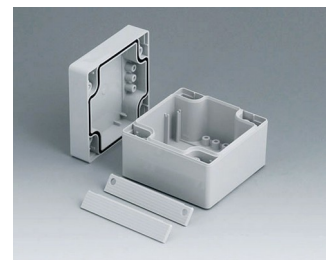
**C1203001**  
Case shell 200, with tongue  
ABS (UL 94 HB)  
light grey RAL 7035  
300x200x40mm



**C1243601**  
Case shell 240, with tongue  
ABS (UL 94 HB)  
light grey RAL 7035  
360x240x40mm



**C2008081**  
ROBUST-BOX WIDTH 80, Vers.  
I  
ABS (UL 94 HB)  
light grey RAL 7035  
80x80x60mm  
IP 66



**C2008082**  
ROBUST-BOX WIDTH 80, Vers.  
II  
PC (UL 94 HB)  
light grey RAL 7035  
80x80x60mm  
IP 66



**C2008121**  
ROBUST-BOX WIDTH 80, Vers.  
I  
ABS (UL 94 HB)  
light grey RAL 7035  
120x80x60mm  
IP 66



**C2008122**  
ROBUST-BOX WIDTH 80, Vers.  
II  
PC (UL 94 HB)  
light grey RAL 7035  
120x80x60mm  
IP 66



**C2008161**  
ROBUST-BOX WIDTH 80, Vers.  
I  
ABS (UL 94 HB)  
light grey RAL 7035  
160x80x60mm  
IP 66



**C2008162**  
ROBUST-BOX WIDTH 80, Vers.  
II  
PC (UL 94 HB)  
light grey RAL 7035  
160x80x60mm  
IP 66



**C2008241**  
ROBUST-BOX WIDTH 80, Vers.  
I  
ABS (UL 94 HB)  
light grey RAL 7035  
240x80x60mm  
IP 66



**C2008242**  
ROBUST-BOX WIDTH 80, Vers.  
II  
PC (UL 94 HB)  
light grey RAL 7035  
240x80x60mm  
IP 66



**C2012121**  
ROBUST-BOX WIDTH 120,  
Vers. I  
ABS (UL 94 HB)  
light grey RAL 7035  
120x120x60mm  
IP 66



**C2012122**  
ROBUST-BOX WIDTH 120,  
Vers. II  
PC (UL 94 HB)  
light grey RAL 7035  
120x120x60mm  
IP 66

# ROBUST-BOX



**C2012201**  
ROBUST-BOX WIDTH 120,  
Vers. I  
ABS (UL 94 HB)  
light grey RAL 7035  
200x120x60mm  
IP 66



**C2012202**  
ROBUST-BOX WIDTH 120,  
Vers. II  
PC (UL 94 HB)  
light grey RAL 7035  
200x120x60mm  
IP 66



**C2012241**  
ROBUST-BOX WIDTH 120,  
Vers. I  
ABS (UL 94 HB)  
light grey RAL 7035  
240x120x60mm  
IP 66



**C2012242**  
ROBUST-BOX WIDTH 120,  
Vers. II  
PC (UL 94 HB)  
light grey RAL 7035  
240x120x60mm  
IP 66



**C2016161**  
ROBUST-BOX WIDTH 160,  
Vers. I  
ABS (UL 94 HB)  
light grey RAL 7035  
160x160x60mm  
IP 66



**C2016162**  
ROBUST-BOX WIDTH 160,  
Vers. II  
PC (UL 94 HB)  
light grey RAL 7035  
160x160x60mm  
IP 66



**C2016241**  
ROBUST-BOX WIDTH 160,  
Vers. I  
ABS (UL 94 HB)  
light grey RAL 7035  
240x160x60mm  
IP 66



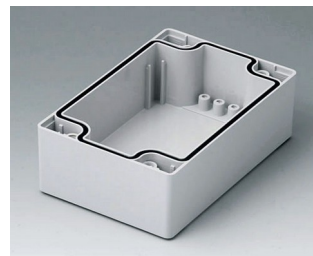
**C2016242**  
ROBUST-BOX WIDTH 160,  
Vers. II  
PC (UL 94 HB)  
light grey RAL 7035  
240x160x60mm  
IP 66



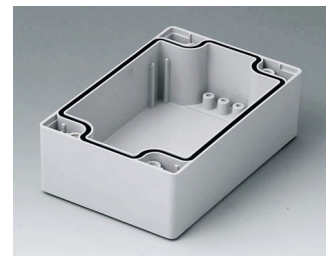
**C2080801**  
Case shell 80, with groove  
ABS (UL 94 HB)  
light grey RAL 7035  
80x80x40mm



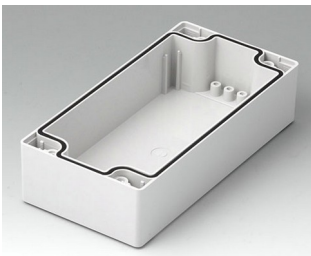
**C2080802**  
Case shell 80, with groove  
PC (UL 94 HB)  
light grey RAL 7035  
80x80x40mm



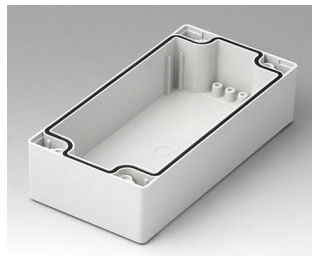
**C2081201**  
Case shell 80, with groove  
ABS (UL 94 HB)  
light grey RAL 7035  
120x80x40mm



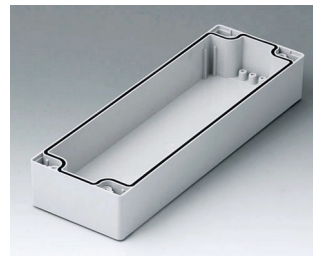
**C2081202**  
Case shell 80, with groove  
PC (UL 94 HB)  
light grey RAL 7035  
120x80x40mm



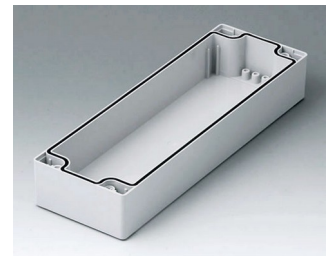
**C2081601**  
Case shell 80, with groove  
ABS (UL 94 HB)  
light grey RAL 7035  
160x80x40mm



**C2081602**  
Case shell 80, with groove  
PC (UL 94 HB)  
light grey RAL 7035  
160x80x40mm

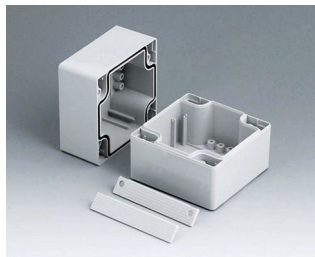


**C2082401**  
Case shell 80, with groove  
ABS (UL 94 HB)  
light grey RAL 7035  
240x80x40mm

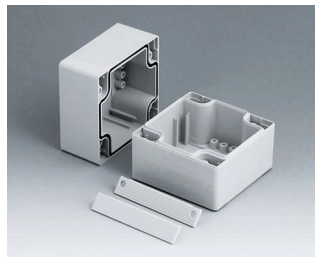


**C2082402**  
Case shell 80, with groove  
PC (UL 94 HB)  
light grey RAL 7035  
240x80x40mm

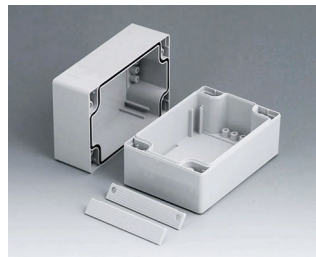
# ROBUST-BOX



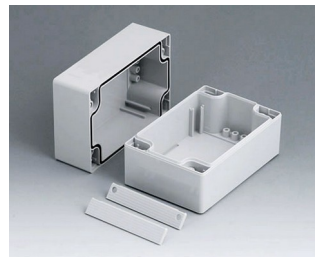
**C2108081**  
ROBUST-BOX WIDTH 80, Vers. I  
ABS (UL 94 HB)  
light grey RAL 7035  
80x80x80mm  
IP 66



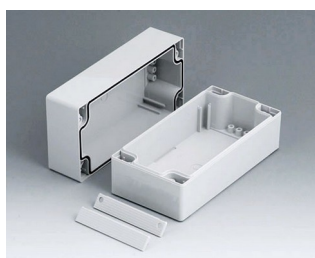
**C2108082**  
ROBUST-BOX WIDTH 80, Vers. II  
PC (UL 94 HB)  
light grey RAL 7035  
80x80x80mm  
IP 66



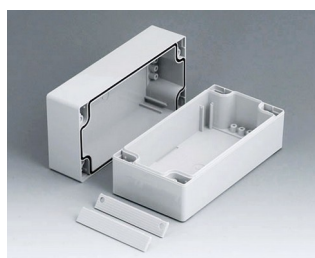
**C2108121**  
ROBUST-BOX WIDTH 80, Vers. I  
ABS (UL 94 HB)  
light grey RAL 7035  
120x80x80mm  
IP 66



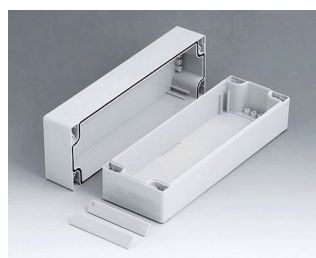
**C2108122**  
ROBUST-BOX WIDTH 80, Vers. II  
PC (UL 94 HB)  
light grey RAL 7035  
120x80x80mm  
IP 66



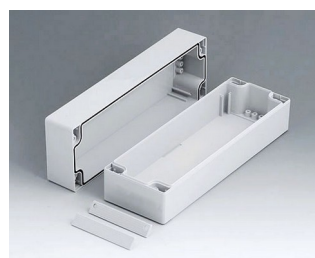
**C2108161**  
ROBUST-BOX WIDTH 80, Vers. I  
ABS (UL 94 HB)  
light grey RAL 7035  
160x80x80mm  
IP 66



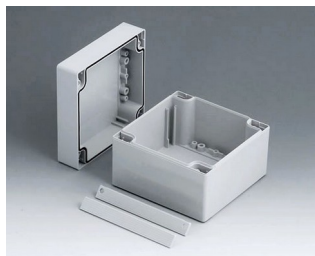
**C2108162**  
ROBUST-BOX WIDTH 80, Vers. II  
PC (UL 94 HB)  
light grey RAL 7035  
160x80x80mm  
IP 66



**C2108241**  
ROBUST-BOX WIDTH 80, Vers. I  
ABS (UL 94 HB)  
light grey RAL 7035  
240x80x80mm  
IP 66



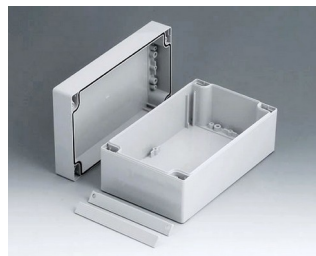
**C2108242**  
ROBUST-BOX WIDTH 80, Vers. II  
PC (UL 94 HB)  
light grey RAL 7035  
240x80x80mm  
IP 66



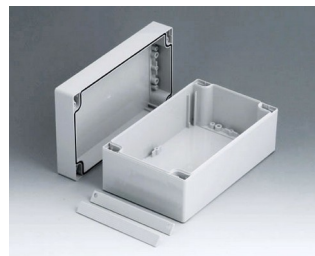
**C2112121**  
ROBUST-BOX WIDTH 120, Vers. I  
ABS (UL 94 HB)  
light grey RAL 7035  
120x120x90mm  
IP 66



**C2112122**  
ROBUST-BOX WIDTH 120, Vers. II  
PC (UL 94 HB)  
light grey RAL 7035  
120x120x90mm  
IP 66



**C2112201**  
ROBUST-BOX WIDTH 120, Vers. I  
ABS (UL 94 HB)  
light grey RAL 7035  
200x120x90mm  
IP 66



**C2112202**  
ROBUST-BOX WIDTH 120, Vers. II  
PC (UL 94 HB)  
light grey RAL 7035  
200x120x90mm  
IP 66



**C2112241**  
ROBUST-BOX WIDTH 120, Vers. I  
ABS (UL 94 HB)  
light grey RAL 7035  
240x120x90mm  
IP 66



**C2112242**  
ROBUST-BOX WIDTH 120, Vers. II  
PC (UL 94 HB)  
light grey RAL 7035  
240x120x90mm  
IP 66



**C2116161**  
ROBUST-BOX WIDTH 160, Vers. I  
ABS (UL 94 HB)  
light grey RAL 7035  
160x160x90mm  
IP 66



**C2116162**  
ROBUST-BOX WIDTH 160, Vers. II  
PC (UL 94 HB)  
light grey RAL 7035  
160x160x90mm  
IP 66

# ROBUST-BOX



**C2116241**  
ROBUST-BOX WIDTH 160,  
Vers. I  
ABS (UL 94 HB)  
light grey RAL 7035  
240x160x90mm  
IP 66



**C2116242**  
ROBUST-BOX WIDTH 160,  
Vers. II  
PC (UL 94 HB)  
light grey RAL 7035  
240x160x90mm  
IP 66



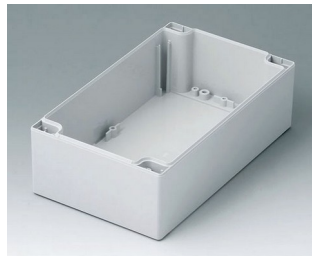
**C2120301**  
ROBUST-BOX WIDTH 200,  
Vers. I  
ABS (UL 94 HB)  
light grey RAL 7035  
300x200x80mm  
IP 66



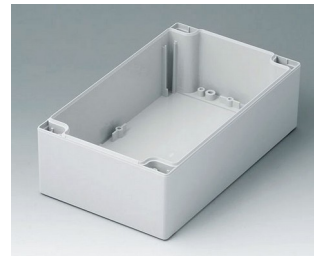
**C2121201**  
Case shell 120, with tongue  
ABS (UL 94 HB)  
light grey RAL 7035  
120x120x60mm



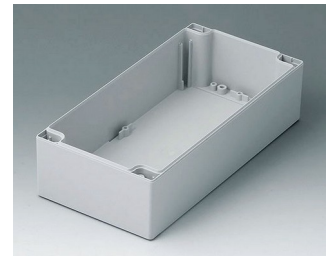
**C2121202**  
Case shell 120, with tongue  
PC (UL 94 HB)  
light grey RAL 7035  
120x120x60mm



**C2122001**  
Case shell 120, with tongue  
ABS (UL 94 HB)  
light grey RAL 7035  
200x120x60mm



**C2122002**  
Case shell 120, with tongue  
PC (UL 94 HB)  
light grey RAL 7035  
200x120x60mm



**C2122401**  
Case shell 120, with tongue  
ABS (UL 94 HB)  
light grey RAL 7035  
240x120x60mm



**C2122402**  
Case shell 120, with tongue  
PC (UL 94 HB)  
light grey RAL 7035  
240x120x60mm



**C2124361**  
ROBUST-BOX WIDTH 240,  
Vers. I  
ABS (UL 94 HB)  
light grey RAL 7035  
360x240x80mm  
IP 66



**C2161601**  
Case shell 160, with tongue  
ABS (UL 94 HB)  
light grey RAL 7035  
160x160x60mm



**C2161602**  
Case shell 160, with tongue  
PC (UL 94 HB)  
light grey RAL 7035  
160x160x60mm



**C2162401**  
Case shell 160, with tongue  
ABS (UL 94 HB)  
light grey RAL 7035  
240x160x60mm



**C2162402**  
Case shell 160, with tongue  
PC (UL 94 HB)  
light grey RAL 7035  
240x160x60mm



**C2203001**  
Case shell 200, with groove  
ABS (UL 94 HB)  
light grey RAL 7035  
300x200x40mm



**C2243601**  
Case shell 240, with groove  
ABS (UL 94 HB)  
light grey RAL 7035  
360x240x40mm

# ROBUST-BOX



**C2416241**  
ROBUST-BOX WIDTH 160,  
Vers. I  
ABS (UL 94 HB)  
light grey RAL 7035  
240x160x120mm  
IP 66



**C2416242**  
ROBUST-BOX WIDTH 160,  
Vers. II  
PC (UL 94 HB)  
light grey RAL 7035  
240x160x120mm  
IP 66



**C2420301**  
ROBUST-BOX WIDTH 200,  
Vers. I  
ABS (UL 94 HB)  
light grey RAL 7035  
300x200x120mm  
IP 66



**C2424361**  
ROBUST-BOX WIDTH 240,  
Vers. I  
ABS (UL 94 HB)  
light grey RAL 7035  
360x240x120mm  
IP 66



**C2520301**  
ROBUST-BOX WIDTH 200,  
Vers. I  
ABS (UL 94 HB)  
light grey RAL 7035  
300x200x160mm  
IP 66



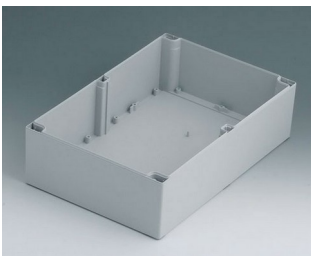
**C2524361**  
ROBUST-BOX WIDTH 240,  
Vers. I  
ABS (UL 94 HB)  
light grey RAL 7035  
360x240x160mm  
IP 66



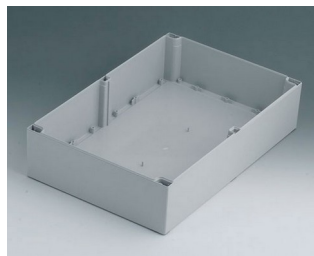
**C3162401**  
Case shell 160, with groove  
ABS (UL 94 HB)  
light grey RAL 7035  
240x160x60mm



**C3162402**  
Case shell 160, with groove  
PC (UL 94 HB)  
light grey RAL 7035  
240x160x60mm



**C4203001**  
Case shell 200, with tongue  
ABS (UL 94 HB)  
light grey RAL 7035  
300x200x80mm



**C4243601**  
Case shell 240, with tongue  
ABS (UL 94 HB)  
light grey RAL 7035  
360x240x80mm

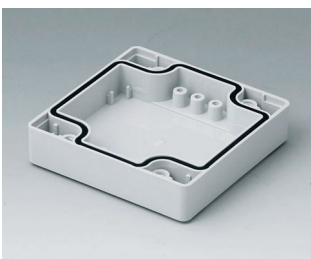


**C5203001**  
Case shell 200, with groove  
ABS (UL 94 HB)  
light grey RAL 7035  
300x200x80mm



**C5243601**  
Case shell 240, with groove  
ABS (UL 94 HB)  
light grey RAL 7035  
360x240x80mm

## System components to complete



**C0080801**  
Case shell 80, with groove  
ABS (UL 94 HB)  
light grey RAL 7035  
80x80x20mm



**C0080802**  
Case shell 80, with groove  
PC (UL 94 HB)  
light grey RAL 7035  
80x80x20mm



**C0081201**  
Case shell 80, with groove  
ABS (UL 94 HB)  
light grey RAL 7035  
120x80x20mm



**C0081202**  
Case shell 80, with groove  
PC (UL 94 HB)  
light grey RAL 7035  
120x80x20mm

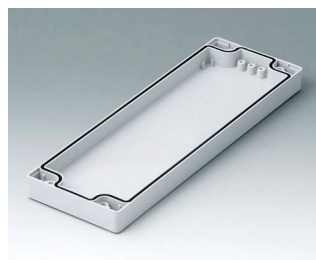
# ROBUST-BOX



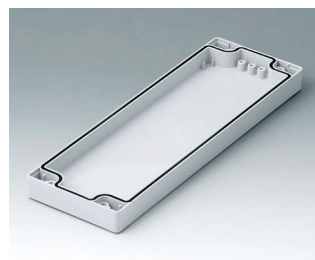
**C0081601**  
Case shell 80, with groove  
ABS (UL 94 HB)  
light grey RAL 7035  
160x80x20mm



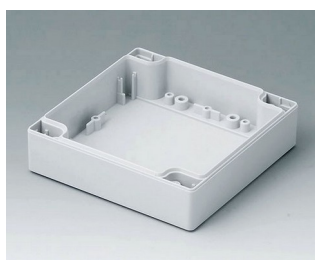
**C0081602**  
Case shell 80, with groove  
PC (UL 94 HB)  
light grey RAL 7035  
160x80x20mm



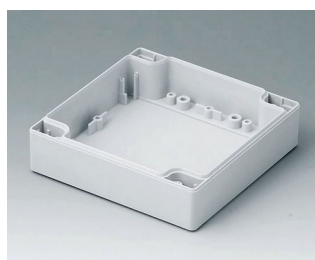
**C0082401**  
Case shell 80, with groove  
ABS (UL 94 HB)  
light grey RAL 7035  
240x80x20mm



**C0082402**  
Case shell 80, with groove  
PC (UL 94 HB)  
light grey RAL 7035  
240x80x20mm



**C0121201**  
Case shell 120, with tongue  
ABS (UL 94 HB)  
light grey RAL 7035  
120x120x30mm



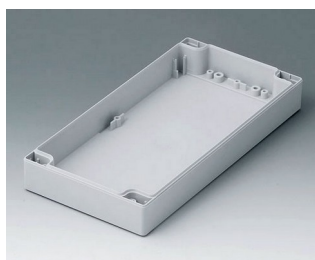
**C0121202**  
Case shell 120, with tongue  
PC (UL 94 HB)  
light grey RAL 7035  
120x120x30mm



**C0122001**  
Case shell 120, with tongue  
ABS (UL 94 HB)  
light grey RAL 7035  
200x120x30mm



**C0122002**  
Case shell 120, with tongue  
PC (UL 94 HB)  
light grey RAL 7035  
200x120x30mm



**C0122401**  
Case shell 120, with tongue  
ABS (UL 94 HB)  
light grey RAL 7035  
240x120x30mm



**C0122402**  
Case shell 120, with tongue  
PC (UL 94 HB)  
light grey RAL 7035  
240x120x30mm



**C0161601**  
Case shell 160, with tongue  
ABS (UL 94 HB)  
light grey RAL 7035  
160x160x30mm



**C0161602**  
Case shell 160, with tongue  
PC (UL 94 HB)  
light grey RAL 7035  
160x160x30mm



**C0162401**  
Case shell 160, with tongue  
ABS (UL 94 HB)  
light grey RAL 7035  
240x160x30mm



**C0162402**  
Case shell 160, with tongue  
PC (UL 94 HB)  
light grey RAL 7035  
240x160x30mm

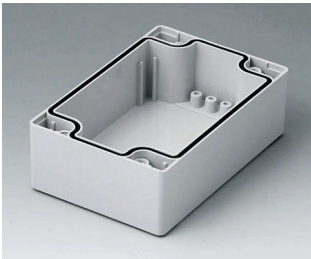


**C2080801**  
Case shell 80, with groove  
ABS (UL 94 HB)  
light grey RAL 7035  
80x80x40mm

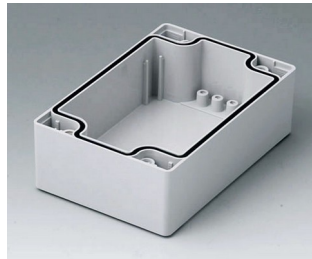


**C2080802**  
Case shell 80, with groove  
PC (UL 94 HB)  
light grey RAL 7035  
80x80x40mm

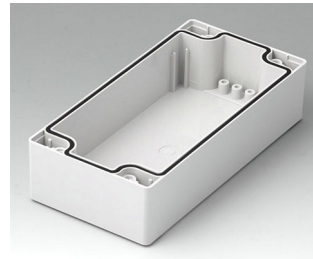
# ROBUST-BOX



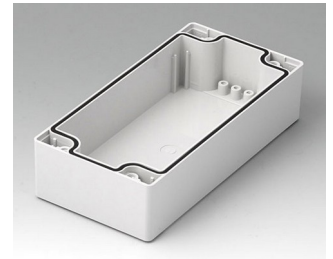
**C2081201**  
Case shell 80, with groove  
ABS (UL 94 HB)  
light grey RAL 7035  
120x80x40mm



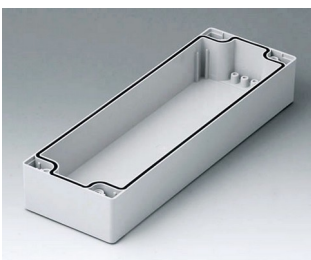
**C2081202**  
Case shell 80, with groove  
PC (UL 94 HB)  
light grey RAL 7035  
120x80x40mm



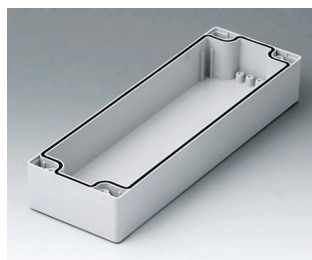
**C2081601**  
Case shell 80, with groove  
ABS (UL 94 HB)  
light grey RAL 7035  
160x80x40mm



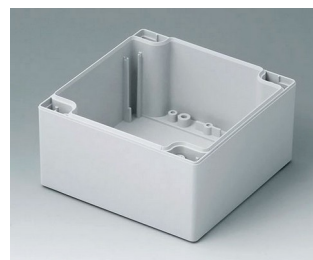
**C2081602**  
Case shell 80, with groove  
PC (UL 94 HB)  
light grey RAL 7035  
160x80x40mm



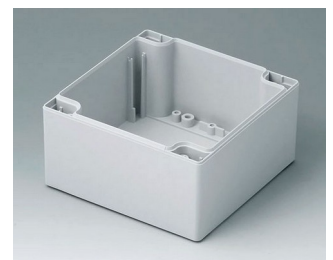
**C2082401**  
Case shell 80, with groove  
ABS (UL 94 HB)  
light grey RAL 7035  
240x80x40mm



**C2082402**  
Case shell 80, with groove  
PC (UL 94 HB)  
light grey RAL 7035  
240x80x40mm



**C2121201**  
Case shell 120, with tongue  
ABS (UL 94 HB)  
light grey RAL 7035  
120x120x60mm



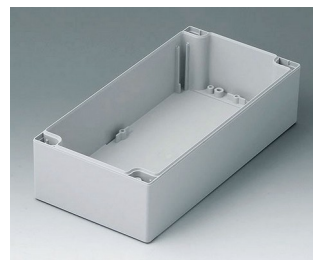
**C2121202**  
Case shell 120, with tongue  
PC (UL 94 HB)  
light grey RAL 7035  
120x120x60mm



**C2122001**  
Case shell 120, with tongue  
ABS (UL 94 HB)  
light grey RAL 7035  
200x120x60mm



**C2122002**  
Case shell 120, with tongue  
PC (UL 94 HB)  
light grey RAL 7035  
200x120x60mm



**C2122401**  
Case shell 120, with tongue  
ABS (UL 94 HB)  
light grey RAL 7035  
240x120x60mm



**C2122402**  
Case shell 120, with tongue  
PC (UL 94 HB)  
light grey RAL 7035  
240x120x60mm



**C2161601**  
Case shell 160, with tongue  
ABS (UL 94 HB)  
light grey RAL 7035  
160x160x60mm



**C2161602**  
Case shell 160, with tongue  
PC (UL 94 HB)  
light grey RAL 7035  
160x160x60mm



**C2162401**  
Case shell 160, with tongue  
ABS (UL 94 HB)  
light grey RAL 7035  
240x160x60mm



**C2162402**  
Case shell 160, with tongue  
PC (UL 94 HB)  
light grey RAL 7035  
240x160x60mm

# ROBUST-BOX



**C2203001**  
Case shell 200, with groove  
ABS (UL 94 HB)  
light grey RAL 7035  
300x200x40mm



**C2243601**  
Case shell 240, with groove  
ABS (UL 94 HB)  
light grey RAL 7035  
360x240x40mm



**C2299001**  
Assembly kit



**C2299002**  
Assembly kit



**C5203001**  
Case shell 200, with groove  
ABS (UL 94 HB)  
light grey RAL 7035  
300x200x80mm



**C5243601**  
Case shell 240, with groove  
ABS (UL 94 HB)  
light grey RAL 7035  
360x240x80mm

## Accessory to complete



**C2200801**  
Cover strips 80, without holes  
PC (UL 94 HB)  
light grey RAL 7035



**C2201082**  
Cover strips 80  
PC (UL 94 HB)  
silver grey RAL 7001



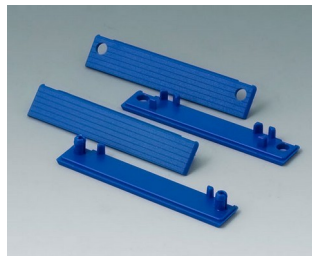
**C2201084**  
Cover strips 80  
PC (UL 94 HB)  
red RAL 3020



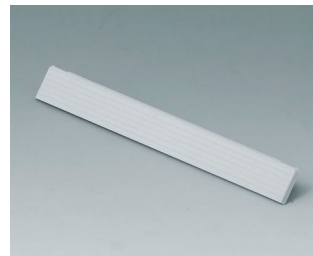
**C2201085**  
Cover strips 80  
PC (UL 94 HB)  
yellow RAL 1023



**C2201086**  
Cover strips 80  
PC (UL 94 HB)  
green RAL 6024



**C2201087**  
Cover strips 80  
PC (UL 94 HB)  
blue RAL 5017



**C2201201**  
Cover strips 120, without holes  
PC (UL 94 HB)  
light grey RAL 7035

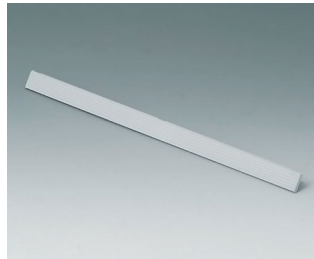


**C2201601**  
Cover strips 160, without holes  
PC (UL 94 HB)  
light grey RAL 7035

# ROBUST-BOX



**C2202001**  
Cover strips 200, without holes  
PC (UL 94 HB)  
light grey RAL 7035



**C2202401**  
Cover strips 240, without holes  
PC (UL 94 HB)  
light grey RAL 7035



**C2203123**  
Cover strips 120  
PC (UL 94 HB)  
silver grey RAL 7001



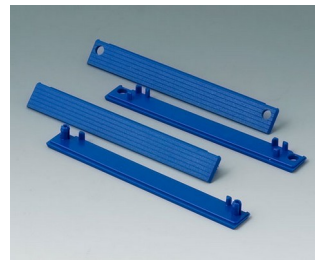
**C2203124**  
Cover strips 120  
PC (UL 94 HB)  
red RAL 3020



**C2203125**  
Cover strips 120  
PC (UL 94 HB)  
yellow RAL 1023



**C2203126**  
Cover strips 120  
PC (UL 94 HB)  
green RAL 6024



**C2203127**  
Cover strips 120  
PC (UL 94 HB)  
blue RAL 5017



**C2204162**  
Cover strips 160  
PC (UL 94 HB)  
silver grey RAL 7001



**C2204164**  
Cover strips 160  
PC (UL 94 HB)  
red RAL 3020



**C2204165**  
Cover strips 160  
PC (UL 94 HB)  
yellow RAL 1023



**C2204166**  
Cover strips 160  
PC (UL 94 HB)  
green RAL 6024



**C2204167**  
Cover strips 160  
PC (UL 94 HB)  
blue RAL 5017



**C2210801**  
Cover strips 80, with holes  
PC (UL 94 HB)  
light grey RAL 7035



**C2211201**  
Cover strips 120, with holes  
PC (UL 94 HB)  
light grey RAL 7035



**C2211601**  
Cover strips 160, with holes  
PC (UL 94 HB)  
light grey RAL 7035



**C2212001**  
Cover strips 200, with holes  
PC (UL 94 HB)  
light grey RAL 7035

# ROBUST-BOX



**C2212401**  
Cover strips 240, with holes  
PC (UL 94 HB)  
light grey RAL 7035

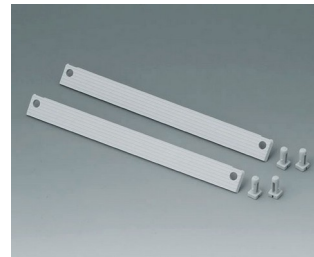
## Accessory "protection"



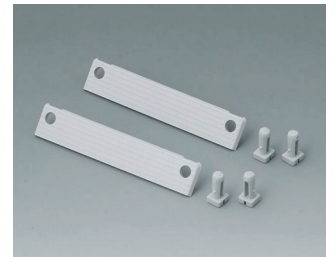
**C2299040**  
Security plug  
PA 6 (UL 94 HB)  
light grey RAL 7035



**C2299042**  
Security kit width 120  
PA 6 (UL 94 HB)  
light grey RAL 7035



**C2299046**  
Security kit width 160  
PA 6 (UL 94 HB)  
light grey RAL 7035



**C2299048**  
Security kit width 80  
PA 6 (UL 94 HB)  
light grey RAL 7035



**C2306917**  
Pressure equalisation element  
M6x0.75  
PA 6 (UL 94 HB)  
light grey RAL 7035  
IP 56



**C2310917**  
Pressure equalisation element  
M10x1  
PA 6 (UL 94 HB)  
light grey RAL 7035  
IP 56

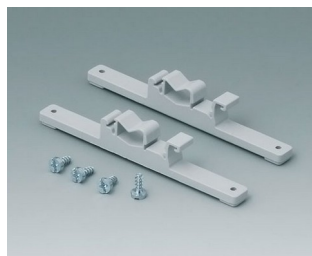


**C2320137**  
Cable grommet  
EPDM  
light grey RAL 7035  
IP 67

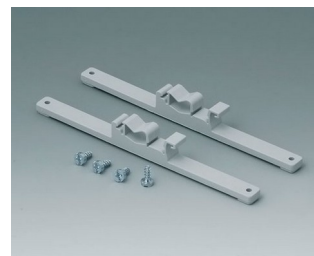
## Accessory "wall/holder"



**C2201088**  
Fastening elements to DIN-Rails  
PA 6  
light grey RAL 7035



**C2203128**  
Fastening elements to DIN-Rails  
PA 6  
light grey RAL 7035



**C2204168**  
Fastening elements to DIN-Rails  
PA 6  
light grey RAL 7035



**C2299028**  
Wall mounting brackets  
PA 6 (UL 94 HB)  
light grey RAL 7035

# ROBUST-BOX



**C2299031**  
Securing hinge for the cover  
PP  
natural-coloured



**C2299088**  
Hinge  
PA 6  
light grey RAL 7035

## Accessory "screws"



**A0306031**  
Self-tapping screws 3 x 6 mm  
(PZ1)

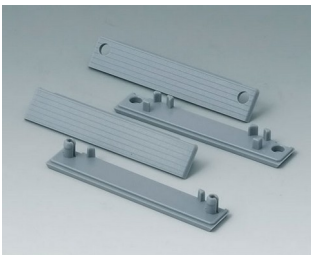


**A0308031**  
Self-tapping screws 3 x 8 mm  
(PZ1)



**A0308132**  
Self-tapping screw 3 x 8 mm  
(T10)  
Stainless steel

## Accessory



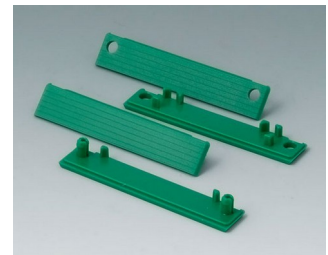
**C2201082**  
Cover strips 80  
PC (UL 94 HB)  
silver grey RAL 7001



**C2201084**  
Cover strips 80  
PC (UL 94 HB)  
red RAL 3020



**C2201085**  
Cover strips 80  
PC (UL 94 HB)  
yellow RAL 1023



**C2201086**  
Cover strips 80  
PC (UL 94 HB)  
green RAL 6024



**C2201087**  
Cover strips 80  
PC (UL 94 HB)  
blue RAL 5017



**C2203123**  
Cover strips 120  
PC (UL 94 HB)  
silver grey RAL 7001



**C2203124**  
Cover strips 120  
PC (UL 94 HB)  
red RAL 3020



**C2203125**  
Cover strips 120  
PC (UL 94 HB)  
yellow RAL 1023

# ROBUST-BOX



**C2203126**  
Cover strips 120  
PC (UL 94 HB)  
green RAL 6024



**C2203127**  
Cover strips 120  
PC (UL 94 HB)  
blue RAL 5017



**C2204162**  
Cover strips 160  
PC (UL 94 HB)  
silver grey RAL 7001



**C2204164**  
Cover strips 160  
PC (UL 94 HB)  
red RAL 3020



**C2204165**  
Cover strips 160  
PC (UL 94 HB)  
yellow RAL 1023



**C2204166**  
Cover strips 160  
PC (UL 94 HB)  
green RAL 6024



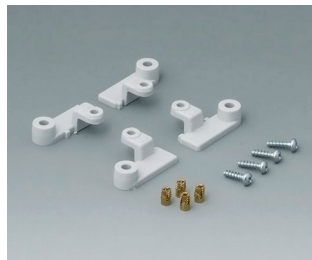
**C2204167**  
Cover strips 160  
PC (UL 94 HB)  
blue RAL 5017



**C2299018**  
Case feet  
TPE (UL 94 HB)



**C2299058**  
PCB support  
PC (UL 94 HB)  
light grey RAL 7035



**C2299068**  
PCB support  
PC (UL 94 HB)  
light grey RAL 7035

Subject to technical modification without notice. © by OKW Gehäusesysteme, Buchen/Germany.