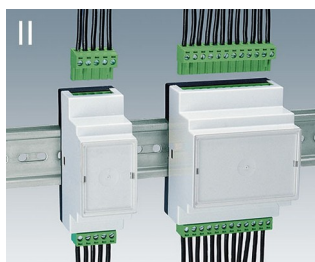


# RAILTEC B

## Mnohostranná pouzdra na DIN lištu

Jednoduchá a rychlá instalace na DIN lištu podle normy EN 60715 TH35 charakterizuje skupinu skříní RAILTEC B.

- 6 velikostí (2-12 modulů) v odkazu na DIN 43880, velikost 1;  
4 velikosti (2, 4, 6 a 9 modulů) s plochou horní částí;  
4 velikosti (2, 4, 6 a 9 modulů)
- Plně izolované a bezpečné na dotyk podle VBG 4 a IEC 529 / DIN VDE 0470-1
- Materiál zpomalující hoření (UL 94 V-0)
- **Provedení I a XI:** pro terminály PCB 5,0 / 5,08
- **Provedení II a XII:** pro záhlaví pinů 5,0 / 5,08
- **Provedení III a XIII:** uzavřené uzávěry, např. pro přední konektory, konektory D-SUB atd.
- **Provedení IV:** pro svislé tiskové terminály 5,0 / 5,08 (pouze zdola)
- **Provedení V:** s 5,0 mřížkovými perforacemi
- **Provedení VI:** otevřete schránky pro jednotlivé kombinace (krytí / dělič)
- Kryt konektorů KNX vhodný pro šířky modulů 2 a 4 (provedení VI nebo pouzdro s plochou horní částí)
- Vhodné pro DIN lišty EN 60715 TH35 nebo přímé namontování na stěnu
- Bez / s větracími štěrbinami pro dobrý odvod tepla
- Flexibilní umístění: Umístění desek plošných spojů ve všech třech prostorových směrech; Dolní část s upevňovacími komorami, horní část s vodičky
- Uzavírací klip předmontovaný v dolní části
- Průhledné víko (příslušenství pro vysoké verze) chrání zobrazovací a ovládací prvky
- Stupeň ochrany < IP40
- **NOVINKA:** RAILTEC BP, M22 – Panelová verze se zásuvnými bočními panely a předním panelem. Jednoduchá a rychlá montáž a rychlá montáž na DIN lišty EN 60715 TH35. Volitelný sklopný průhledný kryt (příslušenství).



# RAILTEC B

## Aplikace a příklady

Univerzální použití jako montážní pouzdro. Podle specifikací strojírenského a automobilového průmyslu. Zvláště vhodné pro řídicí techniku.



CAN BUS system module for packaging machines



Earthfault detection and short-circuit indicator



Energy management in data centres



Industrial Gateways



Industrial VDSL2/ADSL2 modems



Monitoring of electrical variables



Power measuring device for energy analysis



Remote meter for condition monitoring



Smart meter for electricity consumption



Water level detector

## Přípůsobení možností

Co ještě potřebujete pro svůj vlastní velmi osobní produkt? Můžeme dodat zapouzdření a ladicí knoflíky se všemi nezbytnými úpravami pro montáž vašich elektronických součástí. Možnosti přizpůsobení pro Railtec B

# RAILTEC B



Mechanické  
opracování



Lakování



Tisk



Laserové značení



Dekorační fólie



Kompletace / Montáž

## Vyberte verze



**B6501110**  
RAILTEC B, 2 modules, Vers. V  
PC (UL 94 V-0)  
light grey RAL 7035  
35x86x58mm



**B6501111**  
RAILTEC B, 2 modules, Vers. I  
PC (UL 94 V-0)  
light grey RAL 7035  
35x86x58mm



**B6501112**  
RAILTEC B, 2 modules, Vers. II  
PC (UL 94 V-0)  
light grey RAL 7035  
35x86x58mm



**B6501113**  
RAILTEC B, 2 modules, Vers. III  
PC (UL 94 V-0)  
light grey RAL 7035  
35x86x58mm



**B6501114**  
RAILTEC B, 2 modules, Vers. I  
PC (UL 94 V-0)  
light grey RAL 7035  
35x86x58mm



**B6501115**  
RAILTEC B, 2 modules, Vers. II  
PC (UL 94 V-0)  
light grey RAL 7035  
35x86x58mm



**B6501116**  
RAILTEC B, 2 modules, Vers. III  
PC (UL 94 V-0)  
light grey RAL 7035  
35x86x58mm



**B6501117**  
RAILTEC B, 2 modules, Vers. IV  
PC (UL 94 V-0)  
light grey RAL 7035  
35x86x58mm

# RAILTEC B



**B6501118**  
RAILTEC B, 2 modules, Vers. IV  
PC (UL 94 V-0)  
light grey RAL 7035  
35x86x58mm



**B6501119**  
RAILTEC B, 2 modules, Vers. V  
PC (UL 94 V-0)  
light grey RAL 7035  
35x86x58mm



**B6501121**  
RAILTEC B, 2 modules, Vers. VI  
PC (UL 94 V-0)  
light grey RAL 7035  
35x90x58mm



**B6501223**  
RAILTEC B, 2 modules, Vers. III  
low profile  
PC (UL 94 V-0)  
light grey RAL 7035  
35x86x31,25mm



**B6501229**  
RAILTEC B, 2 modules, Vers.  
low profile  
PC (UL 94 V-0)  
light grey RAL 7035  
35x89,6x31,25mm



**B6502110**  
RAILTEC B, 3 modules, Vers. V  
PC (UL 94 V-0)  
light grey RAL 7035  
52,5x86x58mm



**B6502111**  
RAILTEC B, 3 modules, Vers. I  
PC (UL 94 V-0)  
light grey RAL 7035  
52,5x86x58mm



**B6502112**  
RAILTEC B, 3 modules, Vers. II  
PC (UL 94 V-0)  
light grey RAL 7035  
52,5x86x58mm



**B6502113**  
RAILTEC B, 3 modules, Vers. III  
PC (UL 94 V-0)  
light grey RAL 7035  
52,5x86x58mm



**B6502114**  
RAILTEC B, 3 modules, Vers. I  
PC (UL 94 V-0)  
light grey RAL 7035  
52,5x86x58mm



**B6502115**  
RAILTEC B, 3 modules, Vers. II  
PC (UL 94 V-0)  
light grey RAL 7035  
52,5x86x58mm



**B6502116**  
RAILTEC B, 3 modules, Vers. III  
PC (UL 94 V-0)  
light grey RAL 7035  
52,5x86x58mm



**B6502117**  
RAILTEC B, 3 modules, Vers. IV  
PC (UL 94 V-0)  
light grey RAL 7035  
52,5x86x58mm



**B6502118**  
RAILTEC B, 3 modules, Vers. IV  
PC (UL 94 V-0)  
light grey RAL 7035  
52,5x86x58mm



**B6502119**  
RAILTEC B, 3 modules, Vers. V  
PC (UL 94 V-0)  
light grey RAL 7035  
52,5x86x58mm



**B6502121**  
RAILTEC B, 3 modules, Vers. VI  
PC (UL 94 V-0)  
light grey RAL 7035  
52,5x90x58mm

# RAILTEC B



**B6503110**  
RAILTEC B, 4 modules, Vers. V  
PC (UL 94 V-0)  
light grey RAL 7035  
70x86x58mm



**B6503111**  
RAILTEC B, 4 modules, Vers. I  
PC (UL 94 V-0)  
light grey RAL 7035  
70x86x58mm



**B6503112**  
RAILTEC B, 4 modules, Vers. II  
PC (UL 94 V-0)  
light grey RAL 7035  
70x86x58mm



**B6503113**  
RAILTEC B, 4 modules, Vers. III  
PC (UL 94 V-0)  
light grey RAL 7035  
70x86x58mm



**B6503114**  
RAILTEC B, 4 modules, Vers. I  
PC (UL 94 V-0)  
light grey RAL 7035  
70x86x58mm



**B6503115**  
RAILTEC B, 4 modules, Vers. II  
PC (UL 94 V-0)  
light grey RAL 7035  
70x86x58mm



**B6503116**  
RAILTEC B, 4 modules, Vers. III  
PC (UL 94 V-0)  
light grey RAL 7035  
70x86x58mm



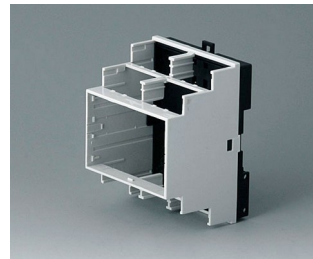
**B6503117**  
RAILTEC B, 4 modules, Vers. IV  
PC (UL 94 V-0)  
light grey RAL 7035  
70x86x58mm



**B6503118**  
RAILTEC B, 4 modules, Vers. IV  
PC (UL 94 V-0)  
light grey RAL 7035  
70x86x58mm



**B6503119**  
RAILTEC B, 4 modules, Vers. V  
PC (UL 94 V-0)  
light grey RAL 7035  
70x86x58mm



**B6503121**  
RAILTEC B, 4 modules, Vers. VI  
PC (UL 94 V-0)  
light grey RAL 7035  
70x90x58mm



**B6503223**  
RAILTEC B, 4 modules, Vers. III  
low profile  
PC (UL 94 V-0)  
light grey RAL 7035  
70x86x31,25mm



**B6503229**  
RAILTEC B, 4 modules, Vers.  
low profile  
PC (UL 94 V-0)  
light grey RAL 7035  
70x89,6x31,25mm



**B6504110**  
RAILTEC B, 6 modules, Vers. V  
PC (UL 94 V-0)  
light grey RAL 7035  
105x86x59mm



**B6504111**  
RAILTEC B, 6 modules, Vers. I  
PC (UL 94 V-0)  
light grey RAL 7035  
105x86x59mm



**B6504112**  
RAILTEC B, 6 modules, Vers. II  
PC (UL 94 V-0)  
light grey RAL 7035  
105x86x59mm

# RAILTEC B



**B6504113**  
RAILTEC B, 6 modules, Vers. III  
PC (UL 94 V-0)  
light grey RAL 7035  
105x86x59mm



**B6504114**  
RAILTEC B, 6 modules, Vers. I  
PC (UL 94 V-0)  
light grey RAL 7035  
105x86x59mm



**B6504115**  
RAILTEC B, 6 modules, Vers. II  
PC (UL 94 V-0)  
light grey RAL 7035  
105x86x59mm



**B6504116**  
RAILTEC B, 6 modules, Vers. III  
PC (UL 94 V-0)  
light grey RAL 7035  
105x86x59mm



**B6504117**  
RAILTEC B, 6 modules, Vers. IV  
PC (UL 94 V-0)  
light grey RAL 7035  
105x86x59mm



**B6504118**  
RAILTEC B, 6 modules, Vers. IV  
PC (UL 94 V-0)  
light grey RAL 7035  
105x86x59mm



**B6504119**  
RAILTEC B, 6 modules, Vers. V  
PC (UL 94 V-0)  
light grey RAL 7035  
105x86x59mm



**B6504121**  
RAILTEC B, 6 modules, Vers. VI  
PC (UL 94 V-0)  
light grey RAL 7035  
105x90x58mm



**B6504223**  
RAILTEC B, 6 modules, Vers. III  
low profile  
PC (UL 94 V-0)  
light grey RAL 7035  
105x86x31,25mm



**B6504229**  
RAILTEC B, 6 modules, Vers.  
low profile  
PC (UL 94 V-0)  
light grey RAL 7035  
105x89,6x31,25mm



**B6505110**  
RAILTEC B, 9 modules, Vers. V  
PC (UL 94 V-0)  
light grey RAL 7035  
157x86x59mm



**B6505111**  
RAILTEC B, 9 modules, Vers. I  
PC (UL 94 V-0)  
light grey RAL 7035  
157x86x59mm



**B6505112**  
RAILTEC B, 9 modules, Vers. II  
PC (UL 94 V-0)  
light grey RAL 7035  
157x86x59mm



**B6505113**  
RAILTEC B, 9 modules, Vers. III  
PC (UL 94 V-0)  
light grey RAL 7035  
157x86x59mm



**B6505114**  
RAILTEC B, 9 modules, Vers. I  
PC (UL 94 V-0)  
light grey RAL 7035  
157x86x59mm



**B6505115**  
RAILTEC B, 9 modules, Vers. II  
PC (UL 94 V-0)  
light grey RAL 7035  
157x86x59mm

# RAILTEC B



**B6505116**  
RAILTEC B, 9 modules, Vers. III  
PC (UL 94 V-0)  
light grey RAL 7035  
157x86x59mm



**B6505117**  
RAILTEC B, 9 modules, Vers. IV  
PC (UL 94 V-0)  
light grey RAL 7035  
157x86x59mm



**B6505118**  
RAILTEC B, 9 modules, Vers. IV  
PC (UL 94 V-0)  
light grey RAL 7035  
157x86x59mm



**B6505119**  
RAILTEC B, 9 modules, Vers. V  
PC (UL 94 V-0)  
light grey RAL 7035  
157x86x59mm



**B6505121**  
RAILTEC B, 9 modules, Vers. VI  
PC (UL 94 V-0)  
light grey RAL 7035  
157x90x58mm



**B6505223**  
RAILTEC B, 9 modules, Vers. III  
low profile  
PC (UL 94 V-0)  
light grey RAL 7035  
157x86x31,25mm



**B6505229**  
RAILTEC B, 9 modules, Vers.  
low profile  
PC (UL 94 V-0)  
light grey RAL 7035  
157,5x89,6x31,25mm



**B6506110**  
RAILTEC B, 12 modules, Vers. V  
PC (UL 94 V-0)  
light grey RAL 7035  
210x90x58mm



**B6506111**  
RAILTEC B, 12 modules, Vers. I  
PC (UL 94 V-0)  
light grey RAL 7035  
210x90x58mm



**B6506112**  
RAILTEC B, 12 modules, Vers. II  
PC (UL 94 V-0)  
light grey RAL 7035  
210x90x58mm



**B6506113**  
RAILTEC B, 12 modules, Vers.  
III  
PC (UL 94 V-0)  
light grey RAL 7035  
210x90x58mm



**B6506114**  
RAILTEC B, 12 modules, Vers. I  
PC (UL 94 V-0)  
light grey RAL 7035  
210x90x58mm



**B6506115**  
RAILTEC B, 12 modules, Vers. II  
PC (UL 94 V-0)  
light grey RAL 7035  
210x90x58mm



**B6506116**  
RAILTEC B, 12 modules, Vers.  
III  
PC (UL 94 V-0)  
light grey RAL 7035  
210x90x58mm



**B6506117**  
RAILTEC B, 12 modules, Vers.  
IV  
PC (UL 94 V-0)  
light grey RAL 7035  
210x90x58mm



**B6506118**  
RAILTEC B, 12 modules, Vers.  
IV  
PC (UL 94 V-0)  
light grey RAL 7035  
210x90x58mm

# RAILTEC B



**B6506119**  
RAILTEC B, 12 modules, Vers. V  
PC (UL 94 V-0)  
light grey RAL 7035  
210x90x58mm



**B6506121**  
RAILTEC B, 12 modules, Vers. VI  
PC (UL 94 V-0)  
light grey RAL 7035  
210x90x58mm



**B6511111**  
RAILTEC B, 2 modules, Vers. XI  
PC (UL 94 V-0)  
light grey RAL 7035  
35x86x58mm



**B6511112**  
RAILTEC B, 2 modules, Vers. XII  
PC (UL 94 V-0)  
light grey RAL 7035  
35x86x58mm



**B6511113**  
RAILTEC B, 2 modules, Vers. XIII  
PC (UL 94 V-0)  
light grey RAL 7035  
35x86x58mm



**B6513111**  
RAILTEC B, 4 modules, Vers. XI  
PC (UL 94 V-0)  
light grey RAL 7035  
70x86x58mm



**B6513112**  
RAILTEC B, 4 modules, Vers. XII  
PC (UL 94 V-0)  
light grey RAL 7035  
70x86x58mm



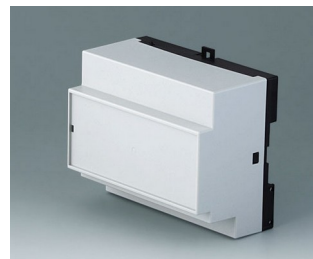
**B6513113**  
RAILTEC B, 4 modules, Vers. XIII  
PC (UL 94 V-0)  
light grey RAL 7035  
70x86x58mm



**B6514111**  
RAILTEC B, 6 modules, Vers. XI  
PC (UL 94 V-0)  
light grey RAL 7035  
105x86x59mm



**B6514112**  
RAILTEC B, 6 modules, Vers. XII  
PC (UL 94 V-0)  
light grey RAL 7035  
105x86x59mm



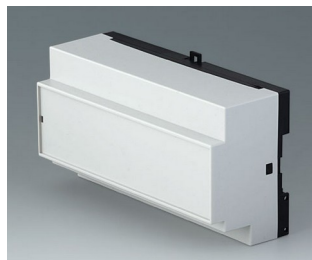
**B6514113**  
RAILTEC B, 6 modules, Vers. XIII  
PC (UL 94 V-0)  
light grey RAL 7035  
105x86x59mm



**B6515111**  
RAILTEC B, 9 modules, Vers. XI  
PC (UL 94 V-0)  
light grey RAL 7035  
157x86x59mm



**B6515112**  
RAILTEC B, 9 modules, Vers. XII  
PC (UL 94 V-0)  
light grey RAL 7035  
157x86x59mm



**B6515113**  
RAILTEC B, 9 modules, Vers. XIII  
PC (UL 94 V-0)  
light grey RAL 7035  
157x86x59mm



**B6522101**  
RAILTEC BP, M22, with closed  
side panels  
PC (UL 94 V-0)  
light grey RAL 7035  
95x23x113mm



**B6522102**  
RAILTEC BP, M22, closed/with  
ventilation slots  
PC (UL 94 V-0)  
light grey RAL 7035  
95x23x113mm

# RAILTEC B



**B6522103**  
 RAILTEC BP, M22, with  
 ventilation slots  
 PC (UL 94 V-0)  
 light grey RAL 7035  
 95x23x113mm

## Accessory "protection"



**B6622101**  
 Hinged cover  
 transparent

## Accessory "wall/holder"

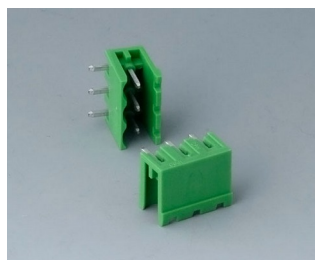


**B6600334**  
 Wall suspension elements  
 PPO (UL 94 V-0)  
 black

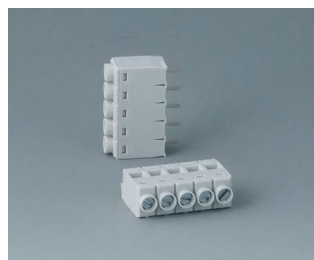
## Accessory "terminals"



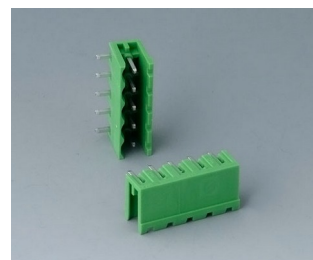
**B6600111**  
 Terminal block, block 5.0  
 PA 68 (UL 94 V-0)  
 light grey



**B6600222**  
 Plug header, block 5.08  
 PA 68 (UL 94 V-0)



**B6601111**  
 Terminal block, block 5.0  
 PA 68 (UL 94 V-0)

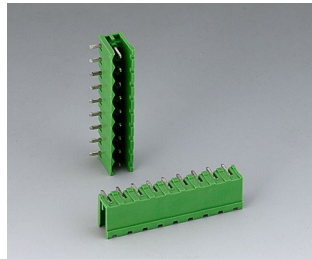


**B6601222**  
 Plug header, block 5.08  
 PA 6 (UL 94 V-0)

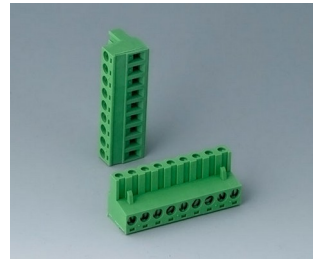
# RAILTEC B



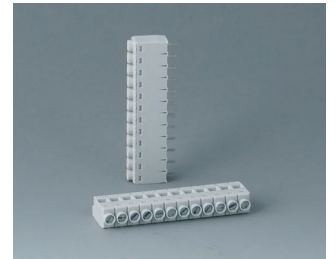
**B6601223**  
Plug header, block 5.08  
PA 6 (UL 94 V-0)



**B6602222**  
Plug header, block 5.08  
PA 6 (UL 94 V-0)



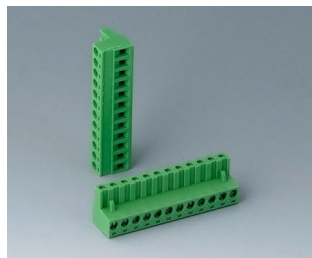
**B6602223**  
Plug header, block 5.08  
PA 6 (UL 94 V-0)



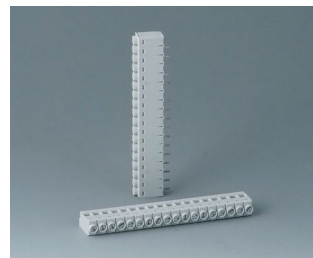
**B6603111**  
Terminal block, block 5.0  
PA 68 (UL 94 V-0)



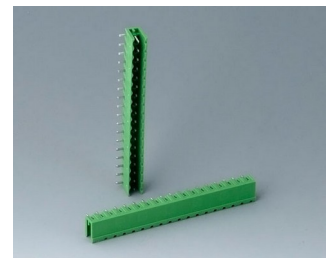
**B6603222**  
Plug header, block 5.08  
PA 6 (UL 94 V-0)



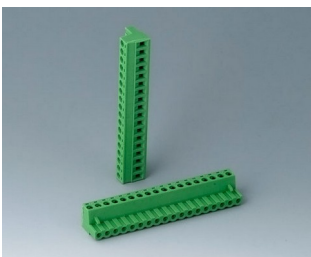
**B6603223**  
Plug header, block 5.08  
PA 6 (UL 94 V-0)



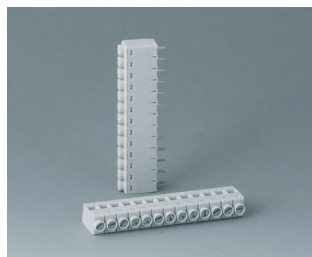
**B6604111**  
Terminal block, block 5.0  
PA 68 (UL 94 V-0)



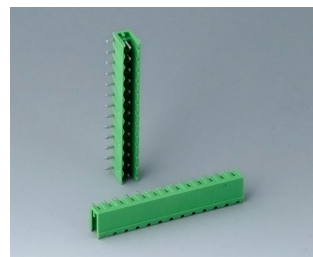
**B6604222**  
Plug header, block 5.08  
PA 68 (UL 94 V-0)



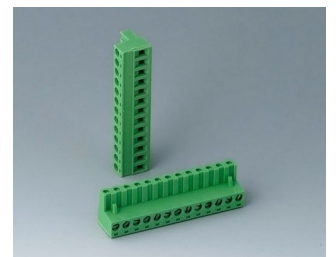
**B6604223**  
Plug header, block 5.08  
PA 68 (UL 94 V-0)



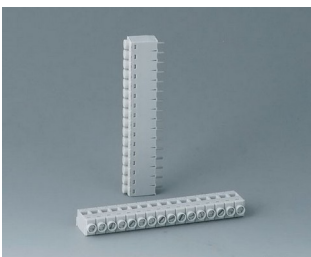
**B6605111**  
Terminal block, block 5.0  
PA 68 (UL 94 V-0)



**B6605222**  
Plug header, block 5.08  
PA 6 (UL 94 V-0)



**B6605223**  
Plug header, block 5.08  
PA 6 (UL 94 V-0)



**B6606111**  
Terminal block, block 5.0  
PA 68 (UL 94 V-0)



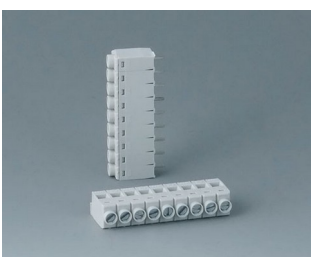
**B6606222**  
Plug header, block 5.08  
PA 6 (UL 94 V-0)



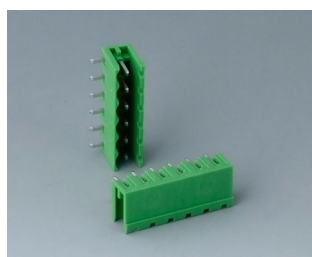
**B6606223**  
Plug header, block 5.08  
PA 6 (UL 94 V-0)



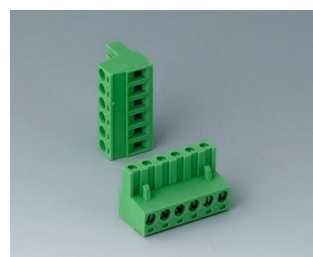
**B6607111**  
Terminal block, block 5.0  
PA 68 (UL 94 V-0)



**B6608111**  
Terminal block, block 5.0  
PA 68 (UL 94 V-0)



**B6608222**  
Plug header, block 5.08  
PA 68 (UL 94 V-0)



**B6608223**  
Plug header, block 5.08  
PA 68 (UL 94 V-0)

# RAILTEC B

## Accessory "terminal guards"



**B6607140**  
Terminal guards, flat  
PC (UL 94 V-0)  
light grey



**B6607141**  
Terminal guards, flat  
PC (UL 94 V-0)  
light grey



**B6607142**  
Terminal guards, flat  
PC (UL 94 V-0)  
light grey



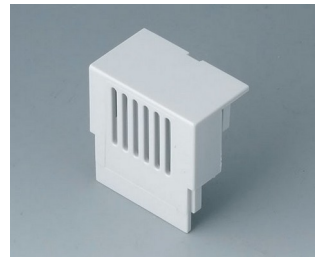
**B6607143**  
Terminal guards, flat  
PC (UL 94 V-0)  
light grey



**B6607145**  
KNX Cover, flat  
PC (UL 94 V-0)  
light grey



**B6607160**  
Terminal guards, high  
PC (UL 94 V-0)  
light grey



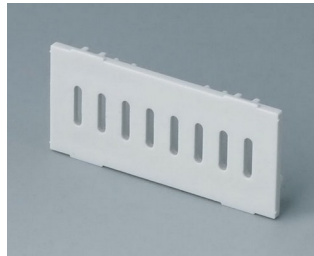
**B6607161**  
Terminal guards, high  
PC (UL 94 V-0)  
light grey



**B6607162**  
Terminal guards, high  
PC (UL 94 V-0)  
light grey



**B6607163**  
Terminal guards, high  
PC (UL 94 V-0)  
light grey



**B6607191**  
Partition plate  
PC (UL 94 V-0)  
light grey



**B6608140**  
Terminal guards, flat  
PC (UL 94 V-0)  
light grey



**B6608141**  
Terminal guards, flat  
PC (UL 94 V-0)  
light grey



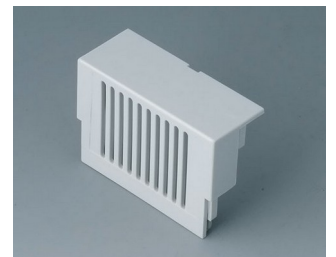
**B6608142**  
Terminal guards, flat  
PC (UL 94 V-0)  
light grey



**B6608143**  
Terminal guards, flat  
PC (UL 94 V-0)  
light grey



**B6608160**  
Terminal guards, high  
PC (UL 94 V-0)  
light grey



**B6608161**  
Terminal guards, high  
PC (UL 94 V-0)  
light grey

# RAILTEC B



**B6608162**  
Terminal guards, high  
PC (UL 94 V-0)  
light grey



**B6608163**  
Terminal guards, high  
PC (UL 94 V-0)  
light grey



**B6608191**  
Partition plate  
PC (UL 94 V-0)  
light grey

## Accessory "screws"



**A0305031**  
Self-tapping screws 2.5 x 6 mm  
(PZ1)

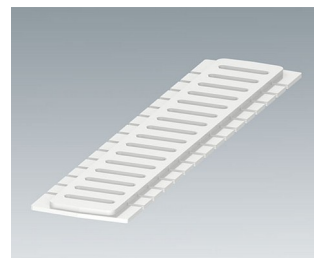
## Accessory



**B6522801**  
Front panel  
PC (UL 94 V-0)  
light grey RAL 7035



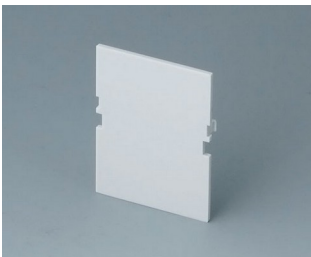
**B6522811**  
Side panel closed  
PC (UL 94 V-0)  
light grey RAL 7035



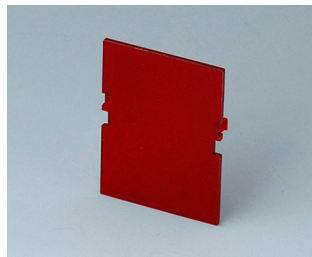
**B6522821**  
Side panel with ventilation slots  
PC (UL 94 V-0)  
light grey RAL 7035



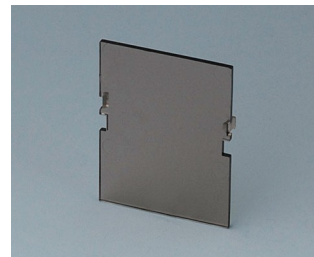
**B6601100**  
Lid, 2 modules  
PC (UL 94 V-0)  
transparent



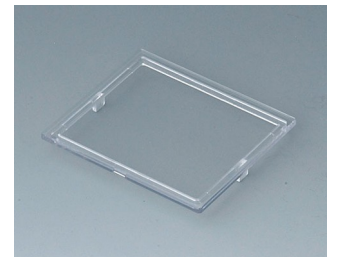
**B6601180**  
Front panel, 2 modules, Vers. VI  
PC (UL 94 V-0)  
light grey  
32x42mm



**B6601480**  
Front panel, 2 modules, Vers. VI  
PC (UL 94 V-0)  
red transparent  
32x42mm



**B6601580**  
Front panel, 2 modules, Vers. VI  
PC (UL 94 V-0)  
smoked glass  
32x42mm



**B6602100**  
Lid, 3 modules  
PC (UL 94 V-0)  
transparent

# RAILTEC B



**B6602180**  
Front panel, 3 modules, Vers. VI  
PC (UL 94 V-0)  
light grey  
49x42mm



**B6602480**  
Front panel, 3 modules, Vers. VI  
PC (UL 94 V-0)  
red transparent  
49x42mm



**B6602580**  
Front panel, 3 modules, Vers. VI  
PC (UL 94 V-0)  
smoked glass  
42x49mm



**B6603100**  
Lid, 4 modules  
PC (UL 94 V-0)  
transparent



**B6603180**  
Front panel, 4 modules, Vers. VI  
PC (UL 94 V-0)  
light grey  
67x42mm



**B6603480**  
Front panel, 4 modules, Vers. VI  
PC (UL 94 V-0)  
red transparent  
67x42mm



**B6603580**  
Front panel, 4 modules, Vers. VI  
PC (UL 94 V-0)  
smoked glass  
67x42mm



**B6604100**  
Lid, 6 modules  
PC (UL 94 V-0)  
transparent



**B6604180**  
Front panel, 6 modules, Vers. VI  
PC (UL 94 V-0)  
light grey  
102x42mm



**B6604480**  
Front panel, 6 modules, Vers. VI  
PC (UL 94 V-0)  
red transparent  
102x42mm



**B6604580**  
Front panel, 6 modules, Vers. VI  
PC (UL 94 V-0)  
smoked glass  
102x42mm



**B6605100**  
Lid, 9 modules  
PC (UL 94 V-0)  
transparent



**B6605180**  
Front panel, 9 modules, Vers. VI  
PC (UL 94 V-0)  
light grey  
155x42mm



**B6605480**  
Front panel, 9 modules, Vers. VI  
PC (UL 94 V-0)  
red transparent  
155x42mm



**B6605580**  
Front panel, 9 modules, Vers. VI  
PC (UL 94 V-0)  
smoked glass  
155x42mm



**B6606100**  
Lid, 12 modules  
PC (UL 94 V-0)  
transparent

# RAILTEC B



**B6606180**  
Front panel, 12 modules, Vers.  
VI  
PC (UL 94 V-0)  
light grey  
206x42mm



**B6606480**  
Front panel, 12 modules, Vers.  
VI  
PC (UL 94 V-0)  
red transparent  
206x42mm



**B6606580**  
Front panel, 12 modules, Vers.  
VI  
PC (UL 94 V-0)  
smoked glass  
206x42mm

Subject to technical modification without notice. © by OKW Gehäusesysteme, Buchen/Germany.