

SENSO-CASE

Ergonomic plastic enclosures for single-handed operation

Specific measuring, controlling and signaling tasks, as well as the recording of data using opto-electronic components, can be carried out with SENSO-CASE easily, quickly and reliably.

- particularly user-friendly thanks to its hand grip style, both right and left handed
- ideally balanced in the hand for maximum user comfort
- versions with/without push-button in the trigger position on the underside for immediate and/or momentary operation
- recessed control panel for membrane keypads, silicon keyboards, push-buttons and LCDs
- ideal for pre-assembled electronics assemblies, including those with integrated interfaces
- large front face for mounting sensors
- simultaneous operation is possible using standard or rechargeable batteries, or a cable connection
- internal power supply with 2 x AA or 1 x 9 V cells; battery holders as accessories
- version with pre-fitted cable glands, plus strain relief accessory
- four part design: top, base, handle cover, cable gland or removable end panel; further version with additional push-button
- holder for secure wall storage as accessory
- internal fastening pillars for PCBs



SENSO-CASE

Applications and Examples

Sensor technology, opto-electronics, opto-digital technologies, industrial image processing, measuring and control technology, stock and sales logging, medical field and laboratory technology, communications, etc.



Battery filler for aviation batteries



Geiger counter



One-handed ground microphone



Online PD handheld scanner

Customising Options

What do you still need for your own very personal product? We can supply enclosures and tuning knobs with all necessary modifications for fitting your electronic components.

Customising options for Senso-Case



Machining



Lacquering



Printing



Laser marking



Decor foils



Special material



EMC shielding



Installation / Assembly
of accessories

Select Versions



A9056107
SENSO-CASE M
ABS (UL 94 HB)
off-white RAL 9002
180x86x45mm
IP 41



A9056108
SENSO-CASE M
ABS (UL 94 HB)
lava
180x86x45mm
IP 41

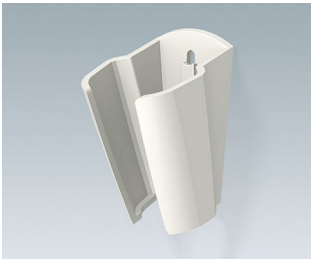


A9056207
SENSO-CASE M
ABS (UL 94 HB)
off-white RAL 9002
180x86x45mm
IP 41

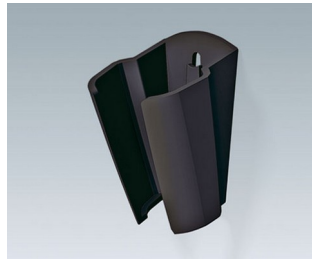


A9056208
SENSO-CASE M
ABS (UL 94 HB)
lava
180x86x45mm
IP 41

SENSO-CASE



A9156307
Holder
ABS (UL 94 HB)
off-white RAL 9002

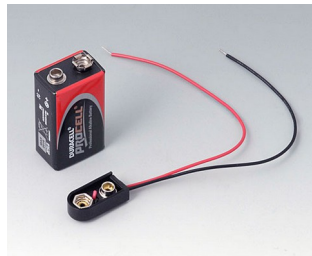


A9156308
Holder
ABS (UL 94 HB)
lava

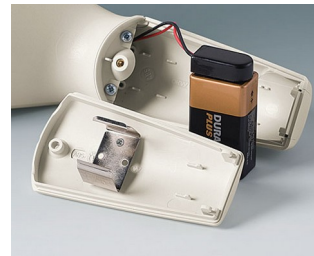
Accessory "battery"



A9156001
Battery holder, 2 x AA
PP
black RAL 9005



A9156002
Plug-in contact, 1 x 9 V (PP3)



A9156003
Battery holder, 1 x 9 V (PP3)
Steel
nickel-plated

Accessory "protection"



A9166004
Set of pull-relief
PA 6
volcano



A9166101
Cable strain, 5.0 - 5.9
SEBS (TPE)
volcano



A9166131
Cable strain, 4.2 - 5.0
SEBS (TPE)
volcano



A9166161
Cable strain, 3.4 - 4.2
SEBS (TPE)
volcano

Accessory "wall/holder"



A9156005
Adhesive foil



A9156307
Holder
ABS (UL 94 HB)
off-white RAL 9002



A9156308
Holder
ABS (UL 94 HB)
lava

SENSO-CASE

Accessory "carrying"



A9100002
Ring eyelet
PA 6
volcano

Accessory "screws"



A0305031
Self-tapping screws 2.5 x 6 mm
(PZ1)

Subject to technical modification without notice. © by OKW Gehäusesysteme, Buchen/Germany.