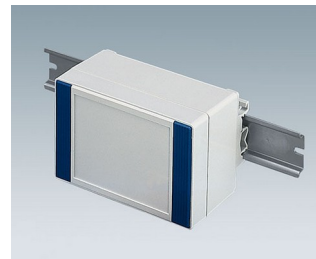
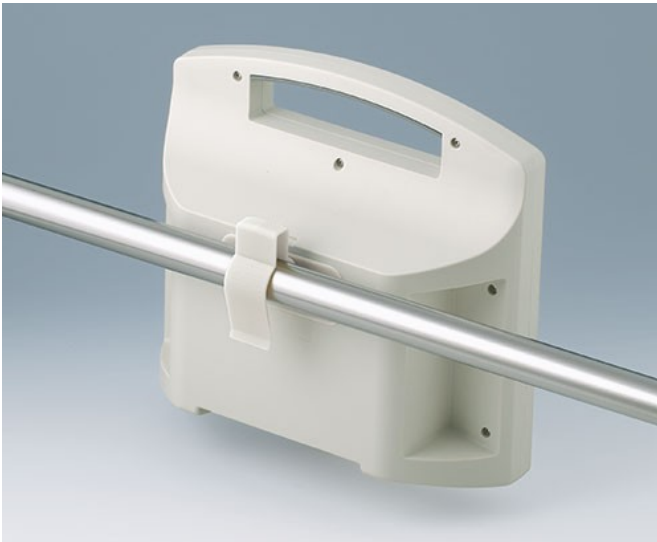


HOLDING DEVICES

- Fastening element for DIN rails in accordance with DIN EN 60715 TH35 and G32
- Holding clamp for round tubes up to \varnothing 32 mm / equipment rails DIN EN ISO 19054
- Pole/mast mounting bracket for versatile applications



Customising Options

What do you still need for your own very personal product? We can supply enclosures and tuning knobs with all necessary modifications for fitting your electronic components.
Customising options for Holding devices



Machining



Printing



Laser marking



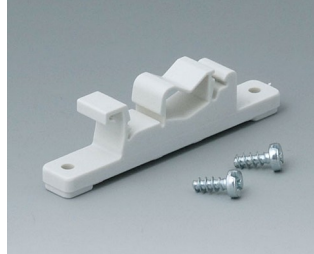
Installation / Assembly
of accessories

HOLDING DEVICES

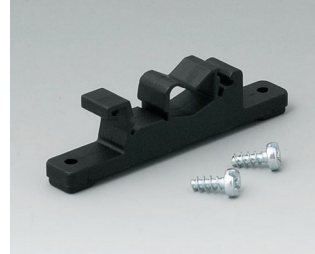
Select Versions



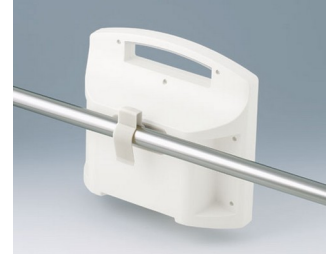
A9325018
 Pole/mast mounting bracket
 ASA (UL 94 HB)
 anthracite grey RAL 7016
 100x100x20mm



B1300017
 Fastening element for DIN-Rails
 PA 6
 off-white RAL 9002



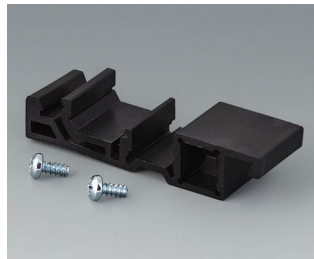
B1300019
 Fastening element for DIN-Rails
 PA 6
 black RAL 9005



B4308237
 Holding clamps
 PA 6
 off-white RAL 9002



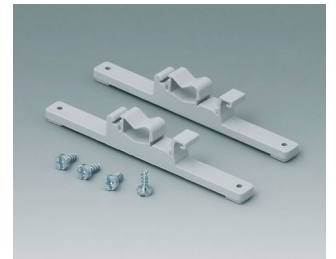
B4308238
 Holding clamps
 PA 6
 lava



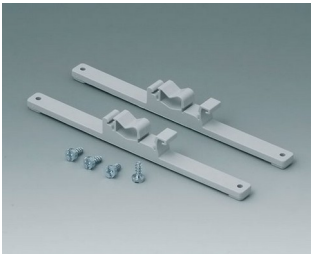
B6811751
 DIN rail adapter
 PA 66 (UL 94 V-0)
 black RAL 9005



C2201088
 Fastening elements to DIN-Rails
 PA 6
 light grey RAL 7035



C2203128
 Fastening elements to DIN-Rails
 PA 6
 light grey RAL 7035



C2204168
 Fastening elements to DIN-Rails
 PA 6
 light grey RAL 7035

Subject to technical modification without notice. © by OKW Gehäusesysteme, Buchen/Germany.