

RAILTEC C

Cajas modulares para raíles DIN y soportes para PCBs

Amplia gama de cajas de rail DIN para montaje en raíles de estándar DIN EN 60715 como para montaje directo en paneles. La gama también incluye soportes/retenedores DIN abiertos para PCBs para componentes individual y otorgar más flexibilidad permitiendo un intercambio sencillo de interfaces.

- Todos los modelos están diseñados para garantizar la instalación sencilla de conexiones y PCBs.
- Materiales de propiedades excelentes para usos exigentes con gran resistencia a la temperatura (UL 94 V-0).
- Ensamblaje de las partes de la caja rápido y sencillo por simple presión.
- **RAILTEC C:** para bornas de conexión a PCB, bornas de conexión frontal enchufables y conectores; marco opcional para posicionar PCBs adicionales; paneles frontales y tapas en diferentes versiones; anchura de 1 a 12 módulos; para raíles DIN EN 60715 TH35; colocación de las placas de circuito impreso en las 3 direcciones; adaptador para raíles TH15 y G32 (de 1 a 4 módulos) como accesorio.

Modelo I Parte frontal abierta, lateral de conexión con paso libre, sin ranuras de ventilación.

Modelo II Parte frontal abierta, lateral de conexión con paso libre, con ranuras de ventilación.

Modelo III Parte frontal abierta, lateral de conexión con prolongación de la pared de la caja, sin ranuras de ventilación.

Modelo IV Parte frontal cerrada, lateral de conexión con paso libre, sin ranuras de ventilación.

- **SOPORTE RAILTEC:** soportes para PCBs a carril DIN; diseño modular para montaje individual de componentes; para raíles DIN EN 60715 TH35, TH15 y G32.
- Categoría de protección < IP 40



RAILTEC C

Modificaciones específicas del cliente

¿Qué necesita en su producto personalizado? En caso necesario, le suministramos las cajas y botones giratorios listas para el montaje con todas las modificaciones y acabados precisos.

Opciones de productos para Railtec C



Mecanizado



Lacado



Impresión



Inscripción láser



Láminas decorativas



Confección y montaje

Versiones



B6700100
RAILTEC C, 1 module, Vers. I
PC (UL 94 V-0)
light grey
17,5x90x58mm



B6700102
RAILTEC C, 1 module, Vers. II
PC (UL 94 V-0)
light grey
17,5x90x58mm



B6700104
RAILTEC C, 1 module, Vers. III
PC (UL 94 V-0)
light grey
17,5x90x58mm



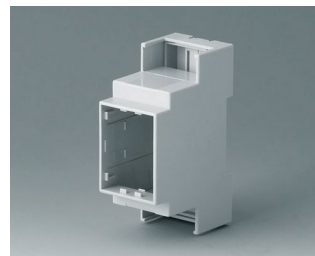
B6700106
RAILTEC C, 1 module, Vers. IV
PC (UL 94 V-0)
light grey
17,5x90x58mm



B6701100
RAILTEC C, 2 modules, Vers. I
PC (UL 94 V-0)
light grey
36x90x58mm



B6701102
RAILTEC C, 2 modules, Vers. II
PC (UL 94 V-0)
light grey
36x90x58mm



B6701104
RAILTEC C, 2 modules, Vers. III
PC (UL 94 V-0)
light grey
36x90x58mm

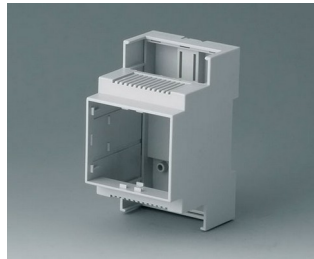


B6701106
RAILTEC C, 2 modules, Vers. IV
PC (UL 94 V-0)
light grey
36x90x58mm

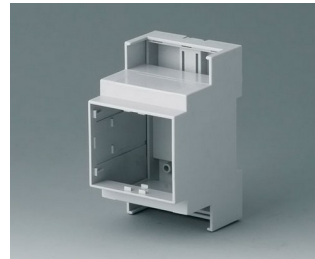
RAILTEC C



B6702100
RAILTEC C, 3 modules, Vers. I
PC (UL 94 V-0)
light grey
53x90x58mm



B6702102
RAILTEC C, 3 modules, Vers. II
PC (UL 94 V-0)
light grey
53x90x58mm



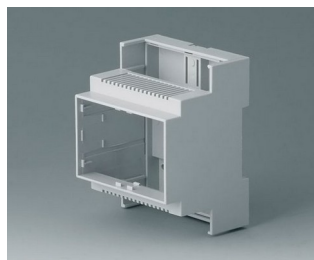
B6702104
RAILTEC C, 3 modules, Vers. III
PC (UL 94 V-0)
light grey
53x90x58mm



B6702106
RAILTEC C, 3 modules, Vers. IV
PC (UL 94 V-0)
light grey
53x90x58mm



B6703100
RAILTEC C, 4 modules, Vers. I
PC (UL 94 V-0)
light grey
71x90x58mm



B6703102
RAILTEC C, 4 modules, Vers. II
PC (UL 94 V-0)
light grey
71x90x58mm



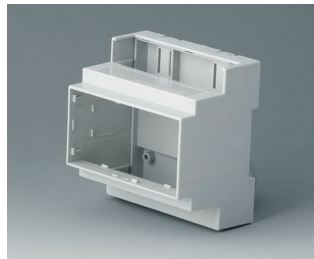
B6703104
RAILTEC C, 4 modules, Vers. III
PC (UL 94 V-0)
light grey
71x90x58mm



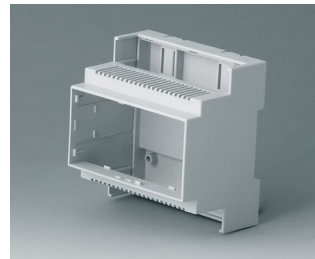
B6703106
RAILTEC C, 4 modules, Vers. IV
PC (UL 94 V-0)
light grey
71x90x58mm



B6704100
RAILTEC C, 5 modules, Vers. I
PC (UL 94 V-0)
light grey
88x90x58mm



B6704101
RAILTEC C, 5 modules, Vers. I
PC (UL 94 V-0)
light grey
88x90x58mm



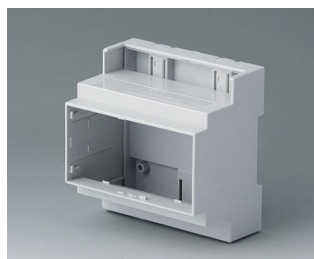
B6704102
RAILTEC C, 5 modules, Vers. II
PC (UL 94 V-0)
light grey
88x90x58mm



B6704103
RAILTEC C, 5 modules, Vers. II
PC (UL 94 V-0)
light grey
88x90x58mm



B6704104
RAILTEC C, 5 modules, Vers. III
PC (UL 94 V-0)
light grey
88x90x58mm



B6704105
RAILTEC C, 5 modules, Vers. III
PC (UL 94 V-0)
light grey
88x90x58mm



B6704106
RAILTEC C, 5 modules, Vers. IV
PC (UL 94 V-0)
light grey
88x90x58mm



B6704107
RAILTEC C, 5 modules, Vers. IV
PC (UL 94 V-0)
light grey
88x90x58mm

RAILTEC C



B6705100
RAILTEC C, 6 modules, Vers. I
PC (UL 94 V-0)
light grey
106x90x58mm



B6705101
RAILTEC C, 6 modules, Vers. I
PC (UL 94 V-0)
light grey
106x90x58mm



B6705102
RAILTEC C, 6 modules, Vers. II
PC (UL 94 V-0)
light grey
106x90x58mm



B6705103
RAILTEC C, 6 modules, Vers. II
PC (UL 94 V-0)
light grey
106x90x58mm



B6705104
RAILTEC C, 6 modules, Vers. III
PC (UL 94 V-0)
light grey
106x90x58mm



B6705105
RAILTEC C, 6 modules, Vers. III
PC (UL 94 V-0)
light grey
106x90x58mm



B6705106
RAILTEC C, 6 modules, Vers. IV
PC (UL 94 V-0)
light grey
106x90x58mm



B6705107
RAILTEC C, 6 modules, Vers. IV
PC (UL 94 V-0)
light grey
106x90x58mm



B6705800
RAILTEC C, 6 modules, flat,
Vers. I
PC (UL 94 V-0)
light grey
106,2x90x32mm



B6705806
RAILTEC C, 6 modules, flat,
Vers. IV
PC (UL 94 V-0)
light grey
106,2x90x32mm



B6706100
RAILTEC C, 9 modules, Vers. I
PC (UL 94 V-0)
light grey
160x90x58mm



B6706101
RAILTEC C, 9 modules, Vers. I
PC (UL 94 V-0)
light grey
160x90x58mm



B6706102
RAILTEC C, 9 modules, Vers. II
PC (UL 94 V-0)
light grey
160x90x58mm



B6706103
RAILTEC C, 9 modules, Vers. II
PC (UL 94 V-0)
light grey
160x90x58mm



B6706104
RAILTEC C, 9 modules, Vers. III
PC (UL 94 V-0)
light grey
160x90x58mm

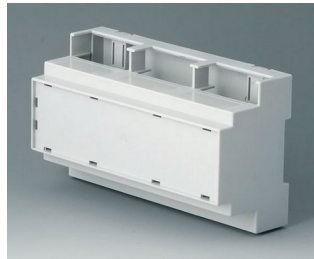


B6706105
RAILTEC C, 9 modules, Vers. III
PC (UL 94 V-0)
light grey
160x90x58mm

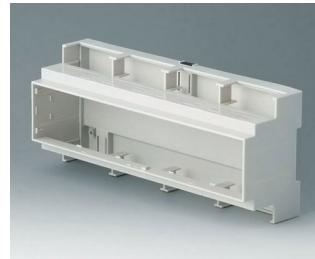
RAILTEC C



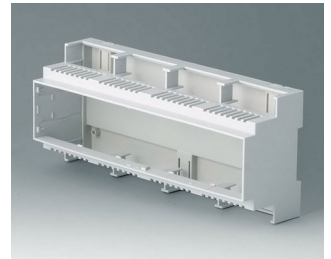
B6706106
RAILTEC C, 9 modules, Vers. IV
PC (UL 94 V-0)
light grey
160x90x58mm



B6706107
RAILTEC C, 9 modules, Vers. IV
PC (UL 94 V-0)
light grey
160x90x58mm



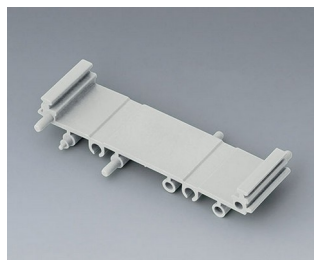
B6707100
RAILTEC C, 12 modules, Vers. I
PC (UL 94 V-0)
light grey
210x90x58mm



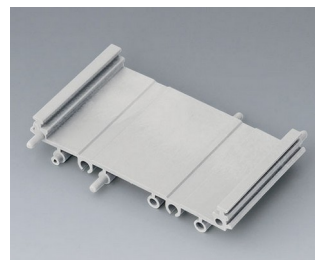
B6707102
RAILTEC C, 12 modules, Vers. II
PC (UL 94 V-0)
light grey
210x90x58mm



B6724330
RAILTEC SUP. 72, intermediate
part
PA 6 (30) (UL 94 V-0)
light grey
82x11,25x16mm



B6724331
RAILTEC SUP. 72, intermediate
part
PA 6 (30) (UL 94 V-0)
light grey
82x22,5x16mm



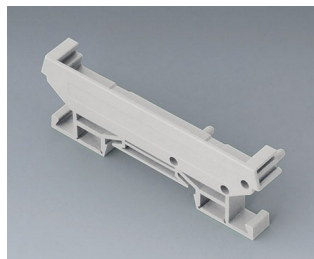
B6724332
RAILTEC SUP. 72, intermediate
part
PA 6 (30) (UL 94 V-0)
light grey
82x45x16mm



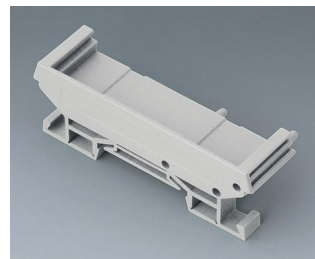
B6724333
RAILTEC SUP. 72, end section
PA 6 (30) (UL 94 V-0)
light grey
82x11,2x16mm



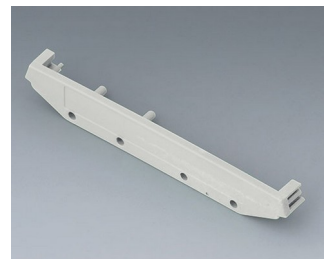
B6724334
RAILTEC SUP. 72, end section
PA 6 (30) (UL 94 V-0)
light grey
82x22,2x16mm



B6724335
RAILTEC SUP. 72, end section
with foot
PA 6 (30) (UL 94 V-0)
light grey
82x11,2x22,5mm



B6724336
RAILTEC SUP. 72, end section
with foot
PA 6 (30) (UL 94 V-0)
light grey
82x22,2x22,5mm



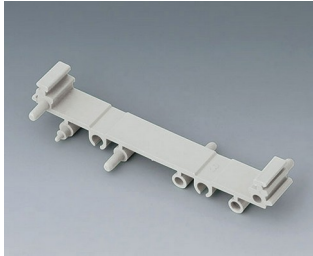
B6724444
RAILTEC SUP. 107, end section
PA 6 (30) (UL 94 V-0)
light grey
118x11,5x17,5mm



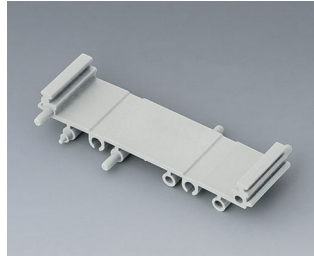
B6724445
RAILTEC SUP. 107, end section
with foot
PA 6 (30) (UL 94 V-0)
light grey
118x11,5x27,5mm

RAILTEC C

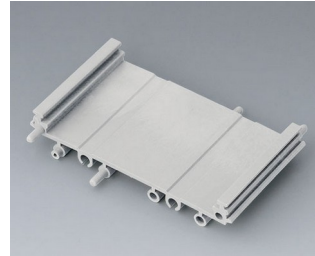
System components to complete



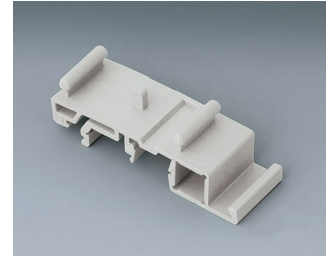
B6724330
RAILTEC SUP. 72, intermediate part
PA 6 (30) (UL 94 V-0)
light grey
82x11,25x16mm



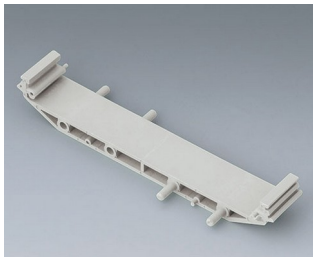
B6724331
RAILTEC SUP. 72, intermediate part
PA 6 (30) (UL 94 V-0)
light grey
82x22,5x16mm



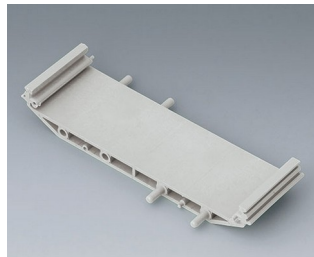
B6724332
RAILTEC SUP. 72, intermediate part
PA 6 (30) (UL 94 V-0)
light grey
82x45x16mm



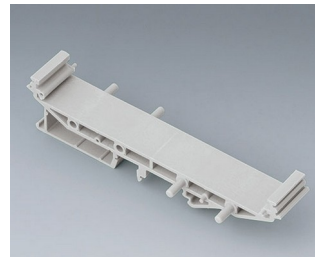
B6724337
RAILTEC SUP. 72, foot
PA 6 (30) (UL 94 V-0)
light grey



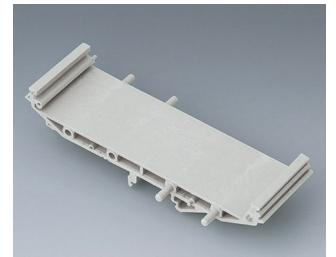
B6724440
RAILTEC SUP. 107, intermediate part
PA 6 (30) (UL 94 V-0)
light grey
118x18,5x17,5mm



B6724441
RAILTEC SUP. 107, intermediate part
PA 6 (30) (UL 94 V-0)
light grey
118x35x17,5mm



B6724442
RAILTEC SUP. 107, intermediate p. + foot
PA 6 (30) (UL 94 V-0)
light grey
118x18,5x27,5mm



B6724443
RAILTEC SUP. 107, intermediate p. + foot
PA 6 (30) (UL 94 V-0)
light grey
118x35x27,5mm

Accessory "wall/holder"



B6811542
Adapter
PA 6 (UL 94 V-0)
green



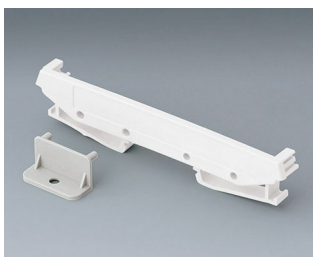
B6824532
Wall suspension element for SUP. 72
PA 6 (30) (UL 94 V-0)
light grey



B6824533
Wall suspension element with foot, SUP. 72
PA 6 (30) (UL 94 V-0)
light grey



B6824542
Wall suspension element for SUP. 107
PA 6 (30) (UL 94 V-0)
light grey



B6824543
Wall suspension element with foot, SUP. 107
PA 6 (30) (UL 94 V-0)
light grey

RAILTEC C

Accessory "terminals"



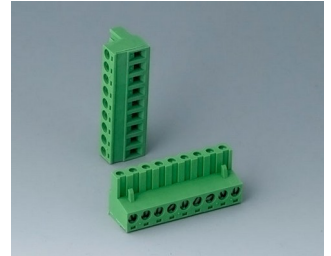
B6601222
Plug header, block 5.08
PA 6 (UL 94 V-0)



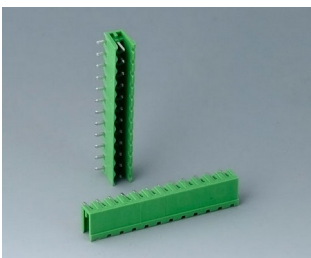
B6601223
Plug header, block 5.08
PA 6 (UL 94 V-0)



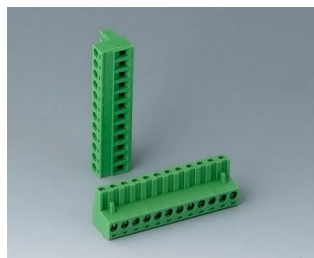
B6602222
Plug header, block 5.08
PA 6 (UL 94 V-0)



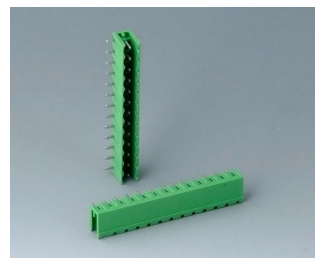
B6602223
Plug header, block 5.08
PA 6 (UL 94 V-0)



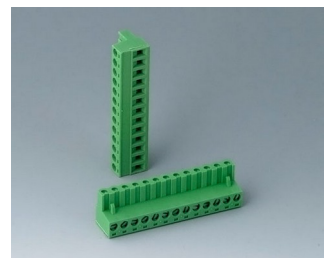
B6603222
Plug header, block 5.08
PA 6 (UL 94 V-0)



B6603223
Plug header, block 5.08
PA 6 (UL 94 V-0)



B6605222
Plug header, block 5.08
PA 6 (UL 94 V-0)



B6605223
Plug header, block 5.08
PA 6 (UL 94 V-0)



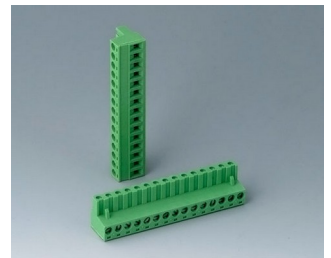
B6606222
Plug header, block 5.08
PA 6 (UL 94 V-0)



B6606223
Plug header, block 5.08
PA 6 (UL 94 V-0)



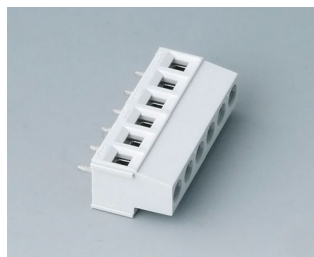
B6607222
Plug header, block 5.08
PA 6 (UL 94 V-0)



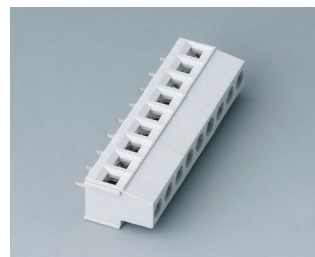
B6607223
Plug header, block 5.08
PA 6 (UL 94 V-0)



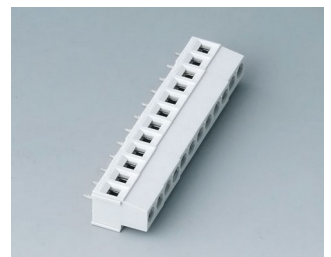
B6800650
Terminal block, block 5.08
PA 68 (UL 94 V-0)
light grey



B6801650
Terminal block, block 5.08
PA 68 (UL 94 V-0)
light grey



B6802650
Terminal block, block 5.08
PA 68 (UL 94 V-0)
light grey



B6803650
Terminal block, block 5.08
PA 68 (UL 94 V-0)
light grey

RAILTEC C



B6804650
Terminal block, block 5.08
PA 68 (UL 94 V-0)
light grey

Accessory "terminal guards"



B6800111
Terminal guards, closed
PC (UL 94 V-0)
light grey



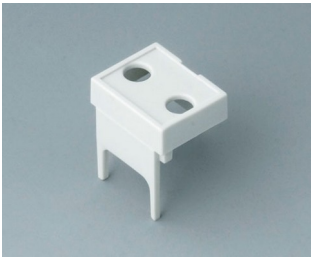
B6800112
Terminal guards, perforated,
5.08
PC (UL 94 V-0)
light grey



B6800113
Terminal guards, with holes, 5.08
PC (UL 94 V-0)
light grey



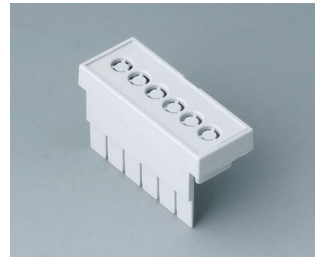
B6800114
Terminal guards, with holes, 7.5
& 7.62
PC (UL 94 V-0)
light grey



B6800115
Terminal guards, with holes,
10.16
PC (UL 94 V-0)
light grey



B6801111
Terminal guards, closed
PC (UL 94 V-0)
light grey



B6801112
Terminal guards, perforated,
5.08
PC (UL 94 V-0)
light grey



B6801113
Terminal guards, with holes, 5.08
PC (UL 94 V-0)
light grey



B6801114
Terminal guards, with holes, 7.5
& 7.62
PC (UL 94 V-0)
light grey



B6801115
Terminal guards, with holes,
10.16
PC (UL 94 V-0)
light grey

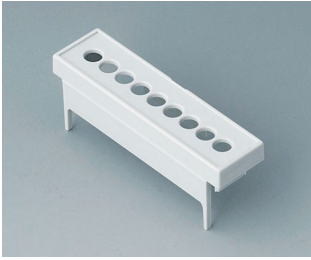


B6802111
Terminal guards, closed
PC (UL 94 V-0)
light grey

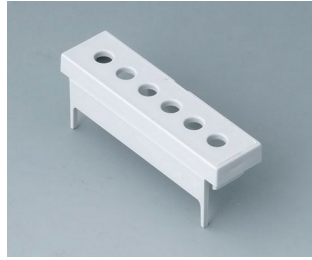


B6802112
Terminal guards, perforated,
5.08
PC (UL 94 V-0)
light grey

RAILTEC C



B6802113
Terminal guards, with holes, 5.08
PC (UL 94 V-0)
light grey



B6802114
Terminal guards, with holes, 7.5
& 7.62
PC (UL 94 V-0)
light grey



B6802115
Terminal guards, with holes,
10.16
PC (UL 94 V-0)
light grey



B6803111
Terminal guards, closed
PC (UL 94 V-0)
light grey



B6803112
Terminal guards, perforated,
5.08
PC (UL 94 V-0)
light grey



B6803113
Terminal guards, with holes, 5.08
PC (UL 94 V-0)
light grey



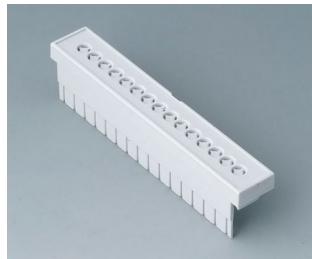
B6803114
Terminal guards, with holes, 7.5
& 7.62
PC (UL 94 V-0)
light grey



B6803115
Terminal guards, with holes,
10.16
PC (UL 94 V-0)
light grey



B6804111
Terminal guards, closed
PC (UL 94 V-0)
light grey



B6804112
Terminal guards, perforated,
5.08
PC (UL 94 V-0)
light grey



B6804113
Terminal guards, with holes, 5.08
PC (UL 94 V-0)
light grey



B6804114
Terminal guards, with holes, 7.5
& 7.62
PC (UL 94 V-0)
light grey



B6804115
Terminal guards, with holes,
10.16
PC (UL 94 V-0)
light grey

RAILTEC C

Accessory



B6800100
Front panel, 1 module
PC (UL 94 V-0)
light grey
14x42mm



B6800200
Front panel, 1 module
PC
transparent
14x42mm



B6801100
Front panel, 2 modules
PC (UL 94 V-0)
light grey
32x42mm



B6801200
Front panel, 2 modules
PC
transparent
32x42mm



B6802100
Front panel, 3 modules
PC (UL 94 V-0)
light grey
49x42mm



B6802200
Front panel, 3 modules
PC
transparent
49x42mm



B6803100
Front panel, 4 modules
PC (UL 94 V-0)
light grey
67x42mm



B6803200
Front panel, 4 modules
PC
transparent
67x42mm



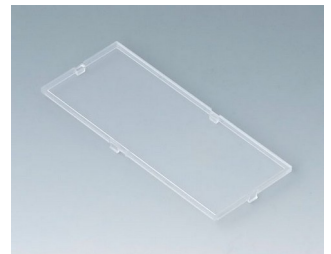
B6804100
Front panel, 5 modules
PC (UL 94 V-0)
light grey
84x42mm



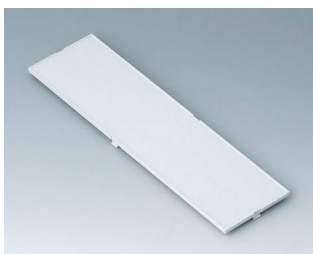
B6804200
Front panel, 5 modules
PC
transparent
84x42mm



B6805100
Front panel, 6 modules
PC (UL 94 V-0)
light grey
102x42mm



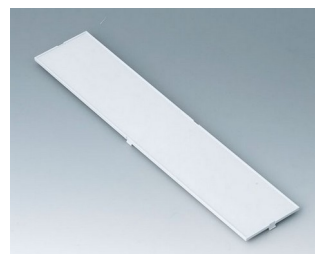
B6805200
Front panel, 6 modules
PC
transparent
102x42mm



B6806100
Front panel, 9 modules
PC (UL 94 V-0)
light grey
155x42mm



B6806200
Front panel, 9 modules
PC
transparent
155x42mm



B6807100
Front panel, 12 modules
PC (UL 94 V-0)
light grey
207,5x42mm