

EURO CASE

Cajas de sobremesa de gran formato

Las EURO CASE son inteligentes, duras y muy fáciles de ensamblar. Las partes central, laterales y los paneles tienen un sistema de encaje mediante presión fuerte que no requiere tornillos para su montaje.

- Cajas de instrumentación móviles y de sobremesa.
- Gran superficie para elementos de mando e interfaces.
- 2 anchuras estándar: 42 TE y 63 TE.
- 4 alturas estándar: 1 HE, 2 HE, 3 HE y 6 HE; piezas laterales, versátiles y combinables entre sí en 3 alturas (0,5 HE, 1 HE y 2 HE).
- Posibilidad de configuraciones adicionales de los paneles laterales para permitir agrandar las cajas para, por ejemplo, apilar varios ensamblajes en una unidad.
- Las nervaduras de refuerzo inyectadas aseguran que estas cajas ligeras tengan un alto grado de resistencia a la torsión y rigidez.
- Inclinación ergonómica mediante pies antivuelco o un asa robusta, que está diseñada como elemento de transporte.
- Los problemas de ventilación pueden solucionarse mediante la inserción de módulos con paneles de ventilación integrados.
- Ensamblaje robusto mediante clips de presión.
- Tiempo montaje mínimo gracias al mecanismo de cierre a presión especial de OKW.
- Paneles frontales de aluminio adicionales de fácil inserción.
- Personalice la EURO CASE según su diseño corporativo, por ejemplo, seleccionando los paneles laterales en los colores corporativos.
- Categoría de protección < IP 40
- Cabezales de fijación internos para placas de circuito impreso y piezas de montaje.
- 4 pies de goma antideslizante incluidos.



EURO CASE

Aplicaciones

Periféricos informáticos, módems e interfaces, tecnología de redes, control de procesos, recopilación de datos de dispositivos electromédicos, tecnologías de medición y regulación, ecc.



Light therapy device

Modificaciones específicas del cliente

¿Qué necesita en su producto personalizado? En caso necesario, le suministramos las cajas y botones giratorios listas para el montaje con todas las modificaciones y acabados precisos.

Opciones de productos para Euro Case



Mecanizado



Lacado



Impresión



Inscripción láser



Materiales especiales

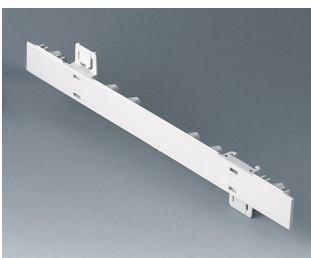


Compatibilidad
electromagnética

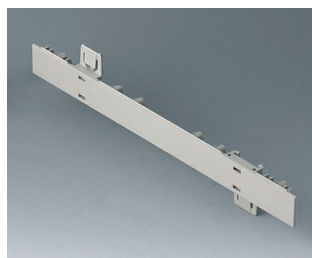


Confección y montaje

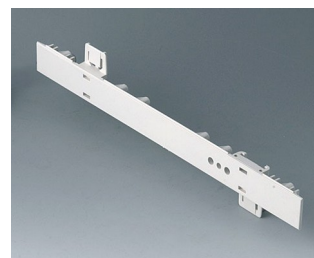
Versiones



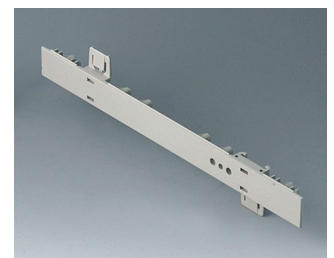
A0105270
Side panel 0.5 HE
ABS (UL 94 HB)
off-white RAL 9002
250x22,25mm



A0105280
Side panel 0.5 HE
ABS (UL 94 HB)
pebble grey RAL 7032
250x22,25mm

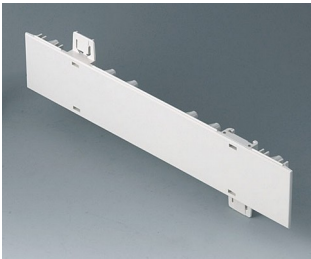


A0106270
Side panel 0.5 HE, for handle
mounting
ABS (UL 94 HB)
off-white RAL 9002
250x22,25mm



A0106280
Side panel 0.5 HE, for handle
mounting
ABS (UL 94 HB)
pebble grey RAL 7032
250x22,25mm

EURO CASE



A0110270
Side panel 1 HE
ABS (UL 94 HB)
off-white RAL 9002
250x44,45mm



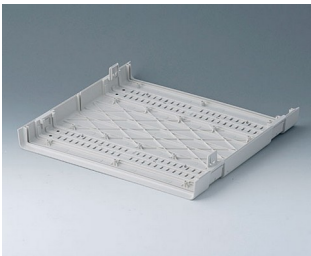
A0110280
Side panel 1 HE
ABS (UL 94 HB)
pebble grey RAL 7032
250x44,45mm



A0111270
Side panel 1 HE, for handle
mounting
ABS (UL 94 HB)
off-white RAL 9002
250x44,45mm



A0111280
Side panel 1 HE, for handle
mounting
ABS (UL 94 HB)
pebble grey RAL 7032
250x44,45mm



A0114170
Shell 42 TE
ABS (UL 94 HB)
off-white RAL 9002
260x250x27mm



A0114370
Snap-in panel, without slots
ABS (UL 94 HB)
off-white RAL 9002



A0116170
Shell 63 TE
ABS (UL 94 HB)
off-white RAL 9002
367x250x27mm



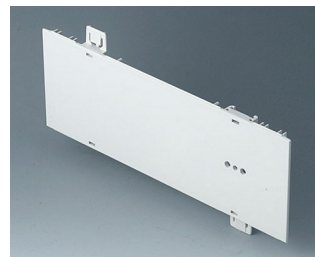
A0116370
Snap-in panel, without slots
ABS (UL 94 HB)
off-white RAL 9002



A0120270
Side panel 2 HE
ABS (UL 94 HB)
off-white RAL 9002
250x88,9mm



A0120280
Side panel 2 HE
ABS (UL 94 HB)
pebble grey RAL 7032
250x88,9mm



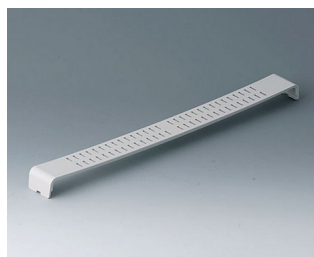
A0121270
Side panel 2 HE, for handle
mounting
ABS (UL 94 HB)
off-white RAL 9002
250x88,9mm



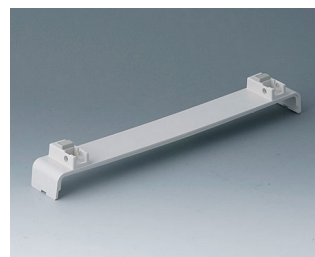
A0121280
Side panel 2 HE, for handle
mounting
ABS (UL 94 HB)
pebble grey RAL 7032
250x88,9mm



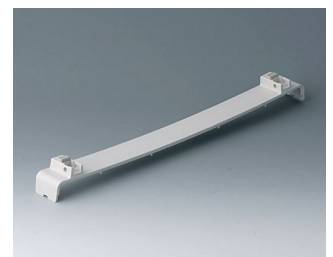
A0124370
Snap-in panel, with slots
ABS (UL 94 HB)
off-white RAL 9002



A0126370
Snap-in panel, with slots
ABS (UL 94 HB)
off-white RAL 9002



A0134370
Snap-in panel, without slots, with
feet
ABS (UL 94 HB)
off-white RAL 9002



A0136370
Snap-in panel, without slots, with
feet
ABS (UL 94 HB)
off-white RAL 9002

EURO CASE



A0144370
 Snap-in panel with, slots, with feet
 ABS (UL 94 HB)
 off-white RAL 9002



A0146370
 Snap-in panel, with slots, with feet
 ABS (UL 94 HB)
 off-white RAL 9002



A0214070
 EURO CASE 42 TE, without handle
 ABS (UL 94 HB)
 off-white RAL 9002
 260x250x54mm



A0214170
 EURO CASE 42 TE, without handle
 ABS (UL 94 HB)
 off-white RAL 9002
 260x250x54mm



A0214270
 EURO CASE 42 TE, without handle
 ABS (UL 94 HB)
 off-white RAL 9002
 260x250x54mm



A0216070
 EURO CASE 63 TE, without handle
 ABS (UL 94 HB)
 off-white RAL 9002
 367x250x54mm



A0216170
 EURO CASE 63 TE, without handle
 ABS (UL 94 HB)
 off-white RAL 9002
 367x250x54mm



A0216270
 EURO CASE 63 TE, without handle
 ABS (UL 94 HB)
 off-white RAL 9002
 367x250x54mm



A0224070
 EURO CASE 42 TE, without handle
 ABS (UL 94 HB)
 off-white RAL 9002
 260x250x98,5mm



A0224170
 EURO CASE 42 TE, without handle
 ABS (UL 94 HB)
 off-white RAL 9002
 260x250x98,5mm



A0224270
 EURO CASE 42 TE, without handle
 ABS (UL 94 HB)
 off-white RAL 9002
 260x250x98,5mm



A0224470
 EURO CASE 42 TE, with handle
 ABS (UL 94 HB)
 off-white RAL 9002
 260x250x98,5mm



A0224570
 EURO CASE 42 TE, with handle
 ABS (UL 94 HB)
 off-white RAL 9002
 260x250x98,5mm



A0224670
 EURO CASE 42 TE, with handle
 ABS (UL 94 HB)
 off-white RAL 9002
 260x250x98,5mm



A0226070
 EURO CASE 63 TE, without handle
 ABS (UL 94 HB)
 off-white RAL 9002
 367x250x98,5mm



A0226170
 EURO CASE 63 TE, without handle
 ABS (UL 94 HB)
 off-white RAL 9002
 367x250x98,5mm

EURO CASE



A0226270
 EURO CASE 63 TE, without handle
 ABS (UL 94 HB)
 off-white RAL 9002
 367x250x98,5mm



A0226470
 EURO CASE 63 TE, with handle
 ABS (UL 94 HB)
 off-white RAL 9002
 367x250x98,5mm



A0226570
 EURO CASE 63 TE, with handle
 ABS (UL 94 HB)
 off-white RAL 9002
 367x250x98,5mm



A0226670
 EURO CASE 63 TE, with handle
 ABS (UL 94 HB)
 off-white RAL 9002
 367x250x98,5mm



A0234070
 EURO CASE 42 TE, without handle
 ABS (UL 94 HB)
 off-white RAL 9002
 260x250x143mm



A0234170
 EURO CASE 42 TE, without handle
 ABS (UL 94 HB)
 off-white RAL 9002
 260x250x143mm



A0234270
 EURO CASE 42 TE, without handle
 ABS (UL 94 HB)
 off-white RAL 9002
 260x250x143mm



A0234470
 EURO CASE 42 TE, with handle
 ABS (UL 94 HB)
 off-white RAL 9002
 260x250x143mm



A0234570
 EURO CASE 42 TE, with handle
 ABS (UL 94 HB)
 off-white RAL 9002
 260x250x143mm



A0234670
 EURO CASE 42 TE, with handle
 ABS (UL 94 HB)
 off-white RAL 9002
 260x250x143mm



A0236070
 EURO CASE 63 TE, without handle
 ABS (UL 94 HB)
 off-white RAL 9002
 367x250x143mm



A0236170
 EURO CASE 63 TE, without handle
 ABS (UL 94 HB)
 off-white RAL 9002
 367x250x143mm



A0236270
 EURO CASE 63 TE, without handle
 ABS (UL 94 HB)
 off-white RAL 9002
 367x250x143mm



A0236470
 EURO CASE 63 TE, with handle
 ABS (UL 94 HB)
 off-white RAL 9002
 367x250x143mm



A0236570
 EURO CASE 63 TE, with handle
 ABS (UL 94 HB)
 off-white RAL 9002
 367x250x143mm



A0236670
 EURO CASE 63 TE, with handle
 ABS (UL 94 HB)
 off-white RAL 9002
 367x250x143mm

EURO CASE



A0266070
EURO CASE 63 TE, without handle
ABS (UL 94 HB)
off-white RAL 9002
367x250x276,5mm



A0266170
EURO CASE 63 TE, without handle
ABS (UL 94 HB)
off-white RAL 9002
367x250x276,5mm



A0266270
EURO CASE 63 TE, without handle
ABS (UL 94 HB)
off-white RAL 9002
367x250x276,5mm



A0344216
Handle 42 TE
PA 6
off-white RAL 9002



A0344217
Handle 42 TE
PA 6
off-white RAL 9002



A0344218
Handle 42 TE
PA 6
pebble grey RAL 7032



A0346316
Handle 63 TE
PA 6
off-white RAL 9002



A0346317
Handle 63 TE
PA 6
off-white RAL 9002



A0346318
Handle 63 TE
PA 6
pebble grey RAL 7032

System components to complete



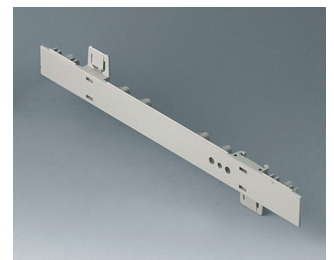
A0105270
Side panel 0.5 HE
ABS (UL 94 HB)
off-white RAL 9002
250x22,25mm



A0105280
Side panel 0.5 HE
ABS (UL 94 HB)
pebble grey RAL 7032
250x22,25mm

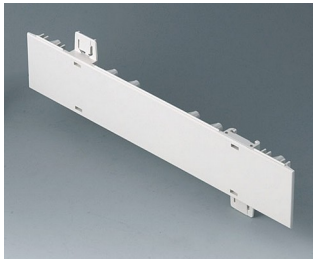


A0106270
Side panel 0.5 HE, for handle mounting
ABS (UL 94 HB)
off-white RAL 9002
250x22,25mm



A0106280
Side panel 0.5 HE, for handle mounting
ABS (UL 94 HB)
pebble grey RAL 7032
250x22,25mm

EURO CASE



A0110270
Side panel 1 HE
ABS (UL 94 HB)
off-white RAL 9002
250x44,45mm



A0110280
Side panel 1 HE
ABS (UL 94 HB)
pebble grey RAL 7032
250x44,45mm



A0111270
Side panel 1 HE, for handle
mounting
ABS (UL 94 HB)
off-white RAL 9002
250x44,45mm



A0111280
Side panel 1 HE, for handle
mounting
ABS (UL 94 HB)
pebble grey RAL 7032
250x44,45mm



A0114370
Snap-in panel, without slots
ABS (UL 94 HB)
off-white RAL 9002



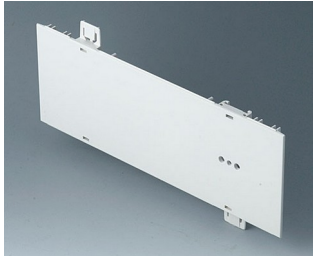
A0116370
Snap-in panel, without slots
ABS (UL 94 HB)
off-white RAL 9002



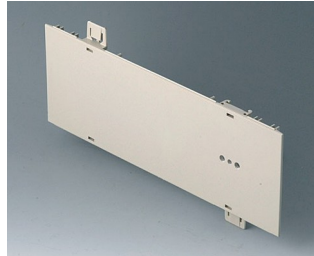
A0120270
Side panel 2 HE
ABS (UL 94 HB)
off-white RAL 9002
250x88,9mm



A0120280
Side panel 2 HE
ABS (UL 94 HB)
pebble grey RAL 7032
250x88,9mm



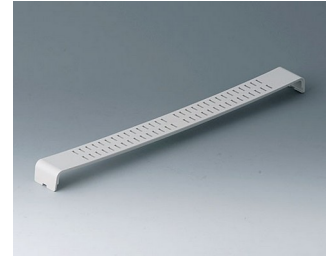
A0121270
Side panel 2 HE, for handle
mounting
ABS (UL 94 HB)
off-white RAL 9002
250x88,9mm



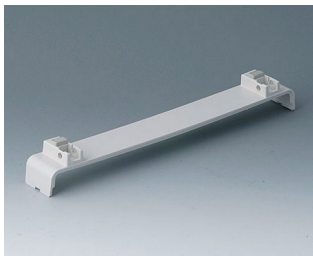
A0121280
Side panel 2 HE, for handle
mounting
ABS (UL 94 HB)
pebble grey RAL 7032
250x88,9mm



A0124370
Snap-in panel, with slots
ABS (UL 94 HB)
off-white RAL 9002



A0126370
Snap-in panel, with slots
ABS (UL 94 HB)
off-white RAL 9002



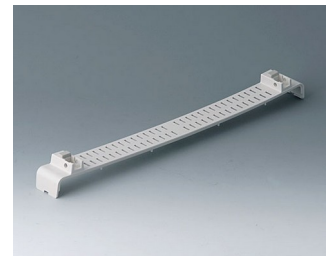
A0134370
Snap-in panel, without slots, with
feet
ABS (UL 94 HB)
off-white RAL 9002



A0136370
Snap-in panel, without slots, with
feet
ABS (UL 94 HB)
off-white RAL 9002



A0144370
Snap-in panel with, slots, with
feet
ABS (UL 94 HB)
off-white RAL 9002



A0146370
Snap-in panel, with slots, with
feet
ABS (UL 94 HB)
off-white RAL 9002

EURO CASE



A0344216
 Handle 42 TE
 PA 6
 off-white RAL 9002



A0344217
 Handle 42 TE
 PA 6
 off-white RAL 9002



A0344218
 Handle 42 TE
 PA 6
 pebble grey RAL 7032



A0346316
 Handle 63 TE
 PA 6
 off-white RAL 9002



A0346317
 Handle 63 TE
 PA 6
 off-white RAL 9002



A0346318
 Handle 63 TE
 PA 6
 pebble grey RAL 7032

Accessory to complete



A0314270
 Front / rear panel 42 TE 1 HE
 Aluminium
 matt anodised
 250,8x46,3x2mm



A0316370
 Front / rear panel 63 TE 1 HE
 Aluminium
 matt anodised
 357,8x46,3x2mm



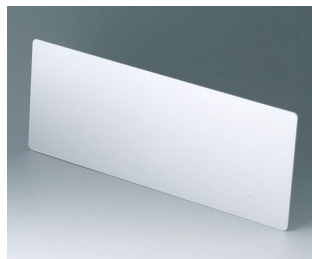
A0324270
 Front / rear panel 42 TE 2 HE
 Aluminium
 matt anodised
 250,8x90,7x2mm



A0326370
 Front / rear panel 63 TE 2 HE
 Aluminium
 matt anodised
 357,8x90,7x2mm



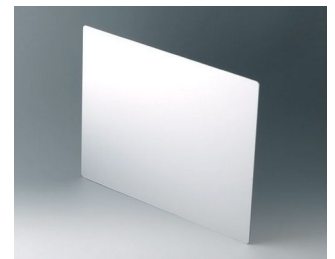
A0334270
 Front / rear panel 42 TE 3 HE
 Aluminium
 matt anodised
 250,8x135,2x2mm



A0336370
 Front / rear panel 63 TE 3 HE
 Aluminium
 matt anodised
 357,8x135,2x2mm



A0354270
 Front / rear panel 42 TE 1.5 HE
 Aluminium
 matt anodised
 250,8x68,5x2mm



A0366370
 Front / rear panel 63 TE 6 HE
 Aluminium
 matt anodised
 268,6x357,8x2mm

EURO CASE

Accessory "screws"



A0306031
Self-tapping screws 3 x 6 mm
(PZ1)



A0308031
Self-tapping screws 3 x 8 mm
(PZ1)



A0308132
Self-tapping screw 3 x 8 mm
(T10)
Stainless steel

Accessory



A0350007
Tilt foot
ABS (UL 94 HB)
off-white RAL 9002

Nos reservamos el derecho a realizar modificaciones técnicas. © OKW Gehäusesysteme, Buchen (Alemania).