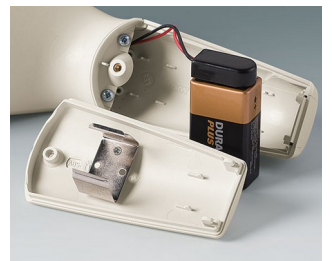


# SOPORTES Y COMPARTIMENTOS PARA PILAS, SOPORTES DE PILAS DE BOTÓN

**OKW**  
GEHÄUSE  
SYSTEME

- Soportes y compartimentos universales para pilas AAA, AA, C y 9V para su instalación directa en paneles frontales o paredes de cajas.
- Soportes de pilas de botón para montar en PCBs.



## Modificaciones específicas del cliente

¿Qué necesita en su producto personalizado? En caso necesario, le suministramos las cajas y botones giratorios listas para el montaje con todas las modificaciones y acabados precisos.

Opciones de productos para Soportes y compartimentos para pilas, soportes de pilas de botón



Mecanizado



Impresión



Inscripción láser



Confección y montaje

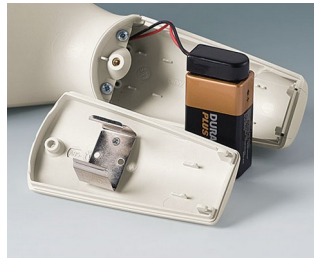
# SOPORTES Y COMPARTIMENTOS PARA PILAS, SOPORTES DE PILAS DE BOTÓN

**OKW**  
GEHÄUSE  
SYSTEME

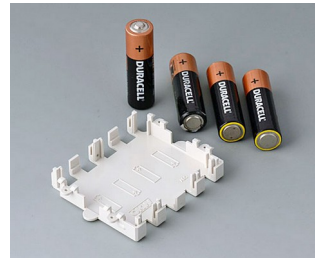
## Versiones



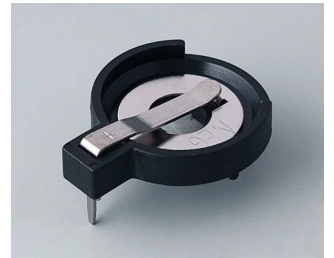
**A9156001**  
Battery holder, 2 x AA  
PP  
black RAL 9005



**A9156003**  
Battery holder, 1 x 9 V (PP3)  
Steel  
nickel-plated



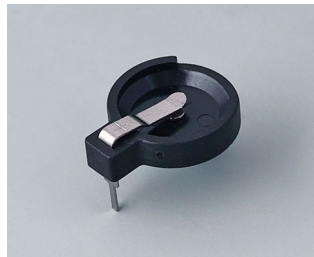
**A9174004**  
Battery compartment, 4 x AA  
ABS (UL 94 HB)  
off-white RAL 9002



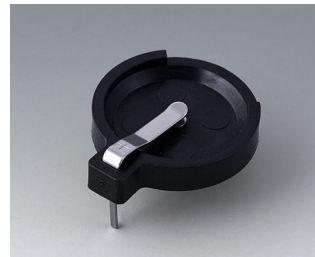
**A9193037**  
Button cell holder, Ø 20 mm



**A9193038**  
Button cell holder, Ø 23 mm



**A9193039**  
Button cell holder, Ø 12 mm



**A9193040**  
Button cell holder, Ø 16 mm



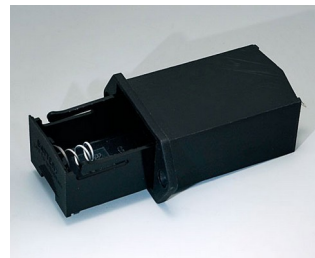
**A9250250**  
Battery spacer  
PE foam  
50x25x4mm



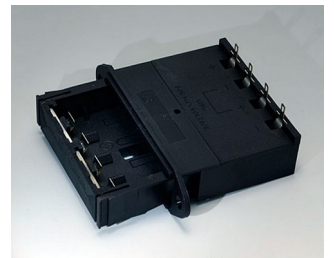
**A9250251**  
Battery spacer  
PE foam  
50x25x3mm



**A9301330**  
Battery holder, 3 x AA  
PA  
black RAL 9005



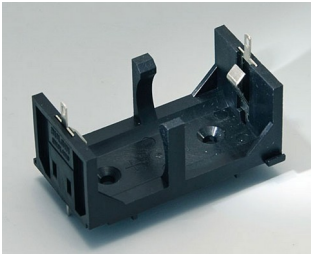
**A9302510**  
Battery holder, 1 x 9 V (PP3)  
PA  
black RAL 9005



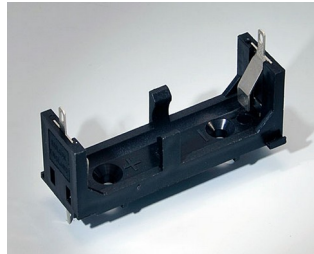
**A9302540**  
Battery holder, 4 x AA  
PA  
black RAL 9005

# SOPORTES Y COMPARTIMENTOS PARA PILAS, SOPORTES DE PILAS DE BOTÓN

**OKW**  
GEHÄUSE  
SYSTEME



**A9303210**  
Battery holder, 1 x C  
PA  
black RAL 9005



**A9303310**  
Battery holder, 1 x AA  
PA  
black RAL 9005



**A9336117**  
Battery compartment kit, 3 x AA  
ABS (UL 94 HB)  
off-white RAL 9002  
93x69mm  
IP 54



**A9336118**  
Battery compartment kit, 3 x AA  
ABS (UL 94 HB)  
lava  
93x69mm  
IP 54



**A9336119**  
Battery compartment kit, 3 x AA  
ABS (UL 94 HB)  
black RAL 9005  
93x69mm  
IP 54



**A9338117**  
Battery compartment kit, 5 x AA  
ABS (UL 94 HB)  
off-white RAL 9002  
93x98mm  
IP 54



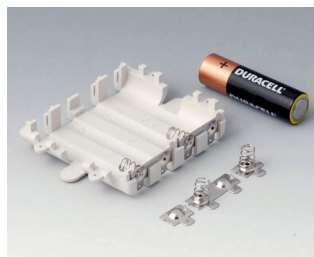
**A9338118**  
Battery compartment kit, 5 x AA  
ABS (UL 94 HB)  
lava  
93x98mm  
IP 54



**A9338119**  
Battery compartment kit, 5 x AA  
ABS (UL 94 HB)  
black RAL 9005  
93x98mm  
IP 54



**A9338218**  
Battery compartment kit, 5 x AA  
ASA+PC (UL 94 V-0)  
lava  
93x98mm  
IP 54

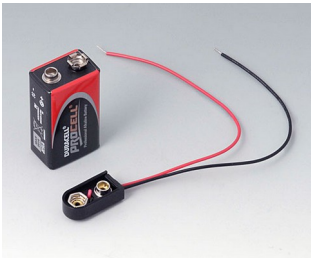


**A9345217**  
Set of battery compartment, 4 x  
AA  
ABS (UL 94 HB)  
off-white RAL 9002

# SOPORTES Y COMPARTIMENTOS PARA PILAS, SOPORTES DE PILAS DE BOTÓN



## Accessory "battery"



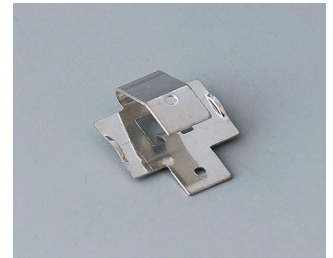
**A9156002**  
Plug-in contact, 1 x 9 V (PP3)



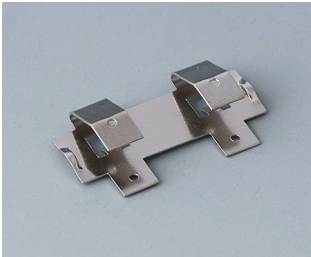
**A9161001**  
Set of battery clips, 4 x AA  
Steel  
tin-plated



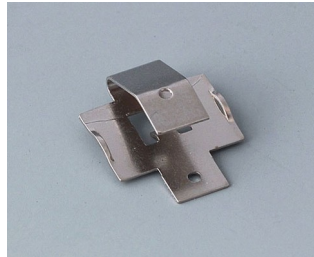
**A9193003**  
Battery-clips, double contact  
Steel  
tin-plated



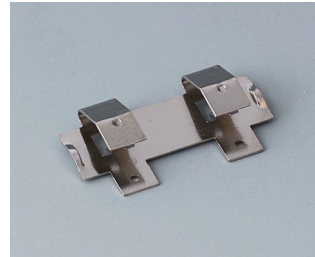
**A9193004**  
Battery-clips, single contact  
Steel  
tin-plated



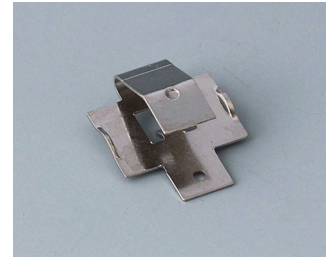
**A9193005**  
Battery clips, double contact  
Steel  
nickel-plated



**A9193006**  
Battery-clips, single contact  
Steel  
nickel-plated



**A9193008**  
Battery clips, double contact  
CuBe  
nickel-plated



**A9193009**  
Battery clips, single contact  
CuBe  
nickel-plated

Nos reservamos el derecho a realizar modificaciones técnicas. © OKW Gehäusesysteme, Buchen (Alemania).