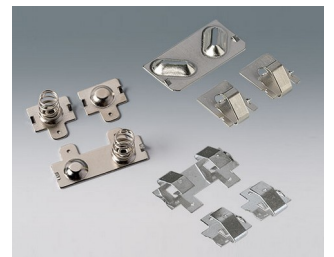
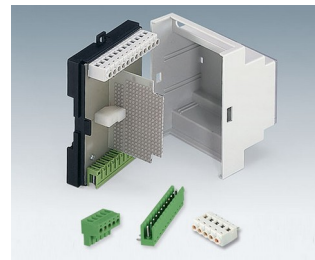
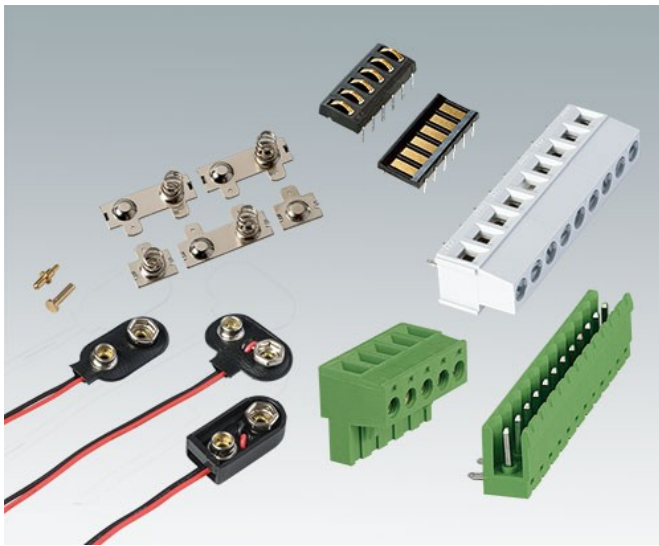
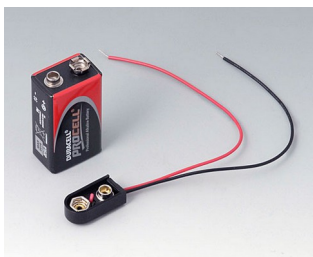


CONTACTOS, CONEXIONES

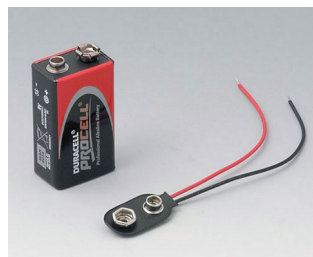
- Ofrecemos una gama de contactos para la transmisión inalámbrica de energía y de datos. Las superficies doradas son altamente conductoras y resistentes a la corrosión, garantizando así una conexión segura y fiable entre los dispositivos y la estación base/soporte.
- La gama de OKW ya incluye cajas, bases y soportes con aberturas pre-moldeadas para el montaje de estos contactos. De esta forma, el usuario puede cargar las pilas/baterías en el dispositivo y transmitir datos de forma inalámbrica, ¡lo que resulta ideal para dispositivos móviles de comunicación!.
- Gran variedad de contacto para pilas/baterías adecuadas para cajas de OKW.
- Gran selección de regletas de bornes y regletas de clavijas.



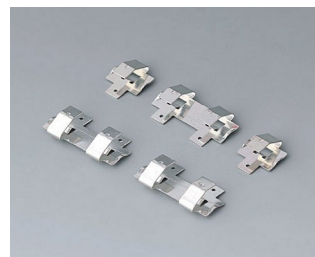
Versiones



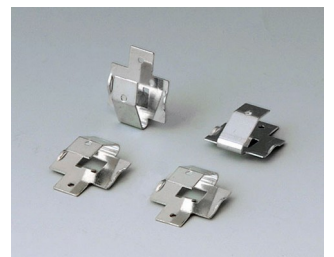
A9156002
Plug-in contact, 1 x 9 V (PP3)



A9160003
Plug-in contact, 1 x 9 V (PP3)



A9161001
Set of battery clips, 4 x AA
Steel
tin-plated



A9161002
Set of battery clips, 2 x 9 V or 4 x AA
Steel
tin-plated

CONTACTOS, CONEXIONES



A9174006
Set of battery clips, 1 x 9 V
Steel
tin-plated



A9190002
Set of battery clips,
2xN/2xAA/2xAAA
Steel
tin-plated



A9190003
Set of battery clips,
2xN/2xAA/2xAAA
Steel
nickel-plated



A9190010
Set of battery clips, 4 x AA
Steel
nickel-plated



A9190011
Set of battery clips, 2 x AA
Steel
nickel-plated



A9190012
Set of battery clips, 4 x AA
Steel
nickel-plated



A9190013
Set of battery clips, 4 x AA
Steel
nickel-plated



A9190014
Set of battery clips, 2 x AA
Steel
nickel-plated



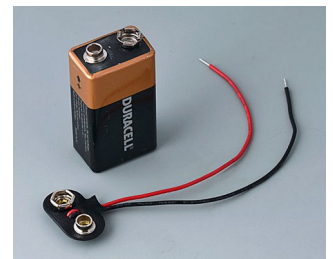
A9190015
Set of battery clips, 2 x AA
Steel
nickel-plated



A9190023
Set of battery clips, 3 x AA
Steel
nickel-plated



A9190024
Set of battery clips, 3 x AAA
Steel
nickel-plated



A9193002
Plug-in contacts, 1 x 9 V (PP3)



A9193003
Battery-clips, double contact
Steel
tin-plated



A9193005
Battery clips, double contact
Steel
nickel-plated



A9193008
Battery clips, double contact
CuBe
nickel-plated



A9193013
Battery-clips, double contact
Steel
nickel-plated

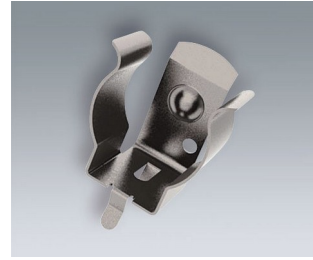
CONTACTOS, CONEXIONES



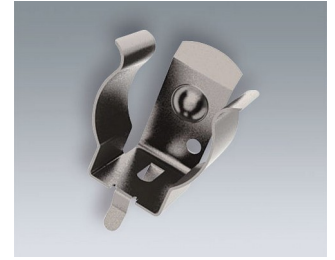
A9193014
 Battery-clips, double contact
 Steel
 nickel-plated



A9193030
 Contact pin
 gold-plated



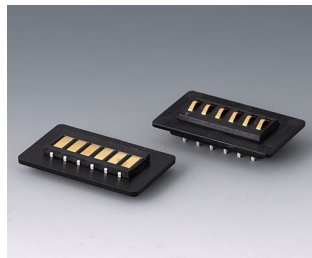
A9193035
 Battery clip, AA
 Steel
 nickel-plated



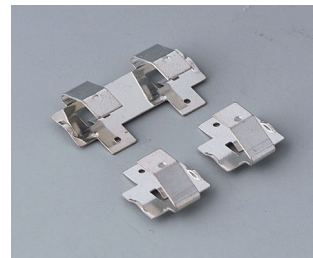
A9193036
 Battery clip, AAA
 Steel
 nickel-plated



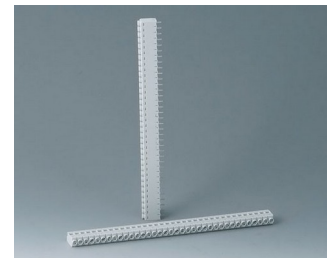
A9193042
 Mounting plates for contacts
 ABS (UL 94 HB)
 black RAL 9005



A9193044
 Contacting kit, 6-pin
 ABS (UL 94 HB)
 black RAL 9005



A9194001
 Set of battery clips, 2 x AA
 Steel
 tin-plated



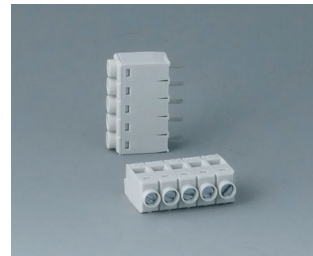
B6600111
 Terminal block, block 5.0
 PA 68 (UL 94 V-0)
 light grey



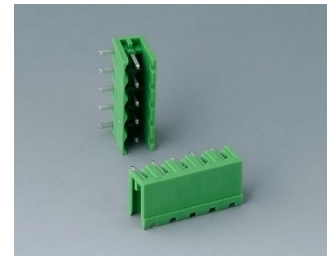
B6600222
 Plug header, block 5.08
 PA 68 (UL 94 V-0)



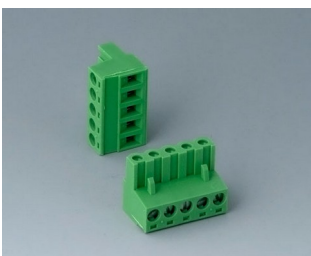
B6600223
 Plug header, block 5.08
 PA 68 (UL 94 V-0)



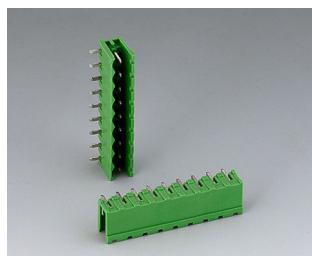
B6601111
 Terminal block, block 5.0
 PA 68 (UL 94 V-0)



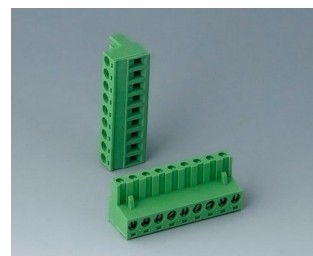
B6601222
 Plug header, block 5.08
 PA 6 (UL 94 V-0)



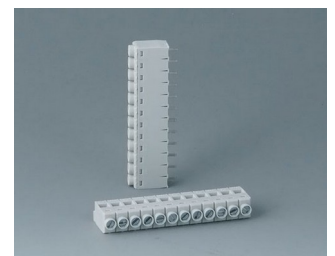
B6601223
 Plug header, block 5.08
 PA 6 (UL 94 V-0)



B6602222
 Plug header, block 5.08
 PA 6 (UL 94 V-0)



B6602223
 Plug header, block 5.08
 PA 6 (UL 94 V-0)



B6603111
 Terminal block, block 5.0
 PA 68 (UL 94 V-0)

CONTACTOS, CONEXIONES



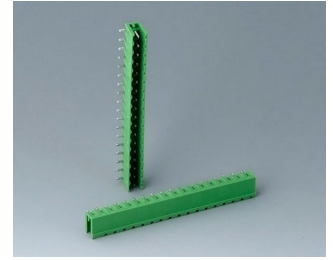
B6603222
 Plug header, block 5.08
 PA 6 (UL 94 V-0)



B6603223
 Plug header, block 5.08
 PA 6 (UL 94 V-0)



B6604111
 Terminal block, block 5.0
 PA 68 (UL 94 V-0)



B6604222
 Plug header, block 5.08
 PA 68 (UL 94 V-0)



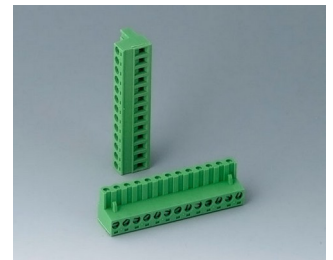
B6604223
 Plug header, block 5.08
 PA 68 (UL 94 V-0)



B6605111
 Terminal block, block 5.0
 PA 68 (UL 94 V-0)



B6605222
 Plug header, block 5.08
 PA 6 (UL 94 V-0)



B6605223
 Plug header, block 5.08
 PA 6 (UL 94 V-0)



B6606111
 Terminal block, block 5.0
 PA 68 (UL 94 V-0)



B6606222
 Plug header, block 5.08
 PA 6 (UL 94 V-0)



B6606223
 Plug header, block 5.08
 PA 6 (UL 94 V-0)



B6607111
 Terminal block, block 5.0
 PA 68 (UL 94 V-0)



B6607222
 Plug header, block 5.08
 PA 6 (UL 94 V-0)



B6607223
 Plug header, block 5.08
 PA 6 (UL 94 V-0)



B6608111
 Terminal block, block 5.0
 PA 68 (UL 94 V-0)

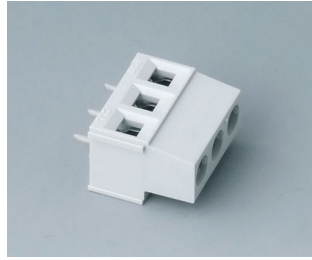


B6608222
 Plug header, block 5.08
 PA 68 (UL 94 V-0)

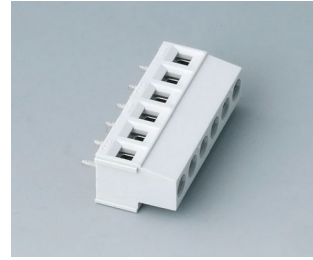
CONTACTOS, CONEXIONES



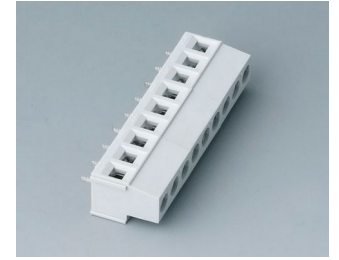
B6608223
Plug header, block 5.08
PA 68 (UL 94 V-0)



B6800650
Terminal block, block 5.08
PA 68 (UL 94 V-0)
light grey



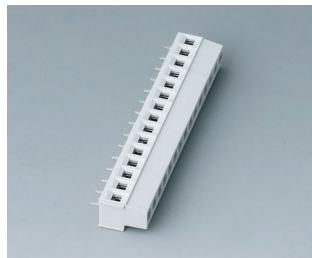
B6801650
Terminal block, block 5.08
PA 68 (UL 94 V-0)
light grey



B6802650
Terminal block, block 5.08
PA 68 (UL 94 V-0)
light grey



B6803650
Terminal block, block 5.08
PA 68 (UL 94 V-0)
light grey



B6804650
Terminal block, block 5.08
PA 68 (UL 94 V-0)
light grey

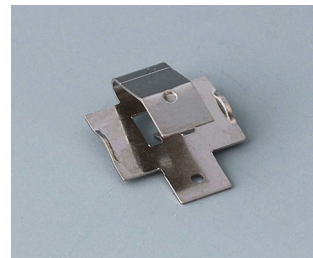
System components to complete



A9193004
Battery-clips, single contact
Steel
tin-plated



A9193006
Battery-clips, single contact
Steel
nickel-plated



A9193009
Battery clips, single contact
CuBe
nickel-plated



A9193011
Battery-clips, single contact
Steel
nickel-plated



A9193012
Battery-clips, single contact
Steel
nickel-plated

CONTACTOS, CONEXIONES

Accessory to complete



A9193031
Spring contact
gold-plated



A9193032
Spring contact

Accessory "battery"

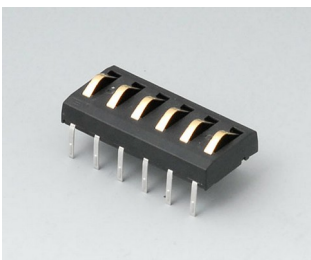


A9193033
Polarity reversal protection
device, positive terminal AA
ABS (UL 94 HB)
off-white RAL 9002



A9193034
Polarity reversal protection
device, positive terminal AAA
ABS (UL 94 HB)
off-white RAL 9002

Accessory



A9178007
Contacts, male
gold-plated



A9178008
Contacts, female
gold-plated

Nos reservamos el derecho a realizar modificaciones técnicas. © OKW Gehäusesysteme, Buchen (Alemania).