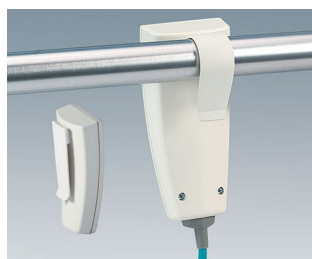
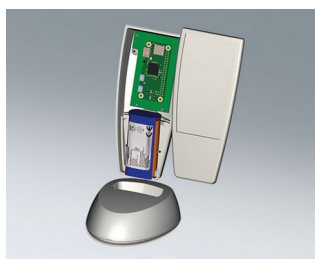
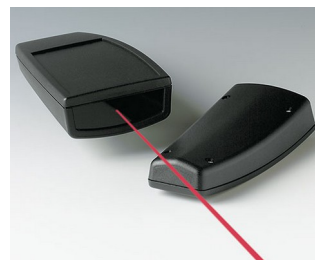


# SMART-CASE

## Contenitori estremamente maneggevoli

L'idea di dare maggior importanza alle esigenze ergonomiche è stato il punto di partenza per lo sviluppo della serie di contenitori per applicazioni mobili SMART-CASE.

- Forma dalle linee curve, convince per la sua indiscussa maneggevolezza
- Ideale per telecomandi collegati con cavo o con funzionamento a batteria: batterie AAA, AA, batteria piatta da 9 V o pila cilindrica da 12 V
- Passacavi adatti per i comuni cavi rotondi (misure M, L e XL)
- Superficie di comando incavata a protezione della tastiera a membrana/pellicola decorativa
- ABS (UL 94 HB), disponibile anche in plexiglass PMMA trasparente ai raggi infrarossi
- Grado di protezione fino a IP 65: misure L e XL con guarnizione opzionale e senza vano batteria
- Pratica clip da cintura e supporto come accessori per riporlo in modo sicuro
- Base M, L e XL per applicazioni da scrivania
- Punti di fissaggio ovvero base di fissaggio per schede e componenti di montaggio
- 4 misure



# SMART-CASE

## Esempi di applicazione

Svariate tipologie di telecomandi, senza fili o tramite cavo. Impiego in particolare in ambito ospedaliero e di istituti sociali, nelle abitazioni e nell'industria.



BIOFIT test unit for eye frequency



Chlorophyll fluorimeter for plant screening



Controlling treatment beds



Infrared hand transmitter for sunscreening curtains



Laser distance measuring device



Leak locator



Nurse presence and staff alert



Remote trainer for dog training



Sleep screening system



System for digital respiratory sound analysis



System for leak detection in leisure vehicles

## Modifiche specifiche del cliente

Che caratteristiche deve avere il vostro prodotto personalizzato? Su richiesta vi forniamo i contenitori e manopole pronti per il montaggio e con tutte le modifiche e le caratteristiche specifiche. Opzioni prodotto per Smart-Case

# SMART-CASE



Lavorazione  
meccanica



Verniciatura



Stampa



Marcatura laser



Pellicole decorative



Materiale speciale



Protezione CEM



Confezionamento /  
montaggio

## Versioni



**A9064107**  
SMART-CASE XS  
ABS (UL 94 HB)  
off-white RAL 9002  
58x35,6x19mm  
IP 40



**A9064109**  
SMART-CASE XS  
ABS (UL 94 HB)  
black RAL 9005  
58x35,6x19mm  
IP 40



**A9064209**  
SMART-CASE XS  
PMMA (IR) (UL 94 HB)  
black RAL 9005  
58x35,6x19mm  
IP 40



**A9066107**  
SMART-CASE M, Vers. I  
ABS (UL 94 HB)  
off-white RAL 9002  
96x47x24mm  
IP 40



**A9066109**  
SMART-CASE M, Vers. I  
ABS (UL 94 HB)  
black RAL 9005  
96x47x24mm  
IP 40



**A9066117**  
SMART-CASE M, Vers. II  
ABS (UL 94 HB)  
off-white RAL 9002  
96x47x24mm  
IP 40



**A9066119**  
SMART-CASE M, Vers. II  
ABS (UL 94 HB)  
black RAL 9005  
96x47x24mm  
IP 40



**A9066127**  
SMART-CASE M, Vers. III  
ABS (UL 94 HB)  
off-white RAL 9002  
96x47x24mm  
IP 40

# SMART-CASE



**A9066129**  
SMART-CASE M, Vers. III  
ABS (UL 94 HB)  
black RAL 9005  
96x47x24mm  
IP 40



**A9066137**  
SMART-CASE M, Vers. IV  
ABS (UL 94 HB)  
off-white RAL 9002  
96x47x24mm  
IP 40



**A9066139**  
SMART-CASE M, Vers. IV  
ABS (UL 94 HB)  
black RAL 9005  
96x47x24mm  
IP 40



**A9066147**  
SMART-CASE M, Vers. V  
ABS (UL 94 HB)  
off-white RAL 9002  
96x47x24mm  
IP 40



**A9066149**  
SMART-CASE M, Vers. V  
ABS (UL 94 HB)  
black RAL 9005  
96x47x24mm  
IP 40



**A9066209**  
SMART CASE M, Vers. I  
PMMA (IR) (UL 94 HB)  
black RAL 9005  
96x47x24mm  
IP 40



**A9066219**  
SMART-CASE M, Vers. II  
PMMA (IR) (UL 94 HB)  
black RAL 9005  
96x47x24mm  
IP 40



**A9066317**  
SMART-CASE M, Vers. VI  
ABS (UL 94 HB)  
off-white RAL 9002  
96x47x24mm  
IP 40



**A9066319**  
SMART-CASE M, Vers. VI  
ABS (UL 94 HB)  
black RAL 9005  
96x47x24mm  
IP 40



**A9066329**  
SMART-CASE M, Vers. III  
ABS (UL 94 HB)  
black RAL 9005  
96x47x24mm  
IP 40



**A9066339**  
SMART-CASE M, Vers. IV  
ABS (UL 94 HB)  
black RAL 9005  
96x47x24mm  
IP 40



**A9066349**  
SMART-CASE M, Vers. V  
ABS (UL 94 HB)  
black RAL 9005  
96x47x24mm  
IP 40



**A9066419**  
SMART-CASE M, Vers. VI  
PMMA (IR) (UL 94 HB)  
black RAL 9005  
96x47x24mm  
IP 40



**A9067107**  
SMART-CASE L, Vers. I  
ABS (UL 94 HB)  
off-white RAL 9002  
140x62,7x30,5mm  
IP 40



**A9067109**  
SMART-CASE L, Vers. I  
ABS (UL 94 HB)  
black RAL 9005  
140x62,7x30,5mm  
IP 40



**A9067117**  
SMART-CASE L, Vers. II  
ABS (UL 94 HB)  
off-white RAL 9002  
140x62,7x30,5mm  
IP 65 opt., IP 40

# SMART-CASE



**A9067119**  
SMART-CASE L, Vers. II  
ABS (UL 94 HB)  
black RAL 9005  
140x62,7x30,5mm  
IP 65 opt., IP 40



**A9067127**  
SMART-CASE L, Vers. III  
ABS (UL 94 HB)  
off-white RAL 9002  
140x62,7x30,5mm  
IP 65 opt., IP 40



**A9067129**  
SMART-CASE L, Vers. III  
ABS (UL 94 HB)  
black RAL 9005  
140x62,7x30,5mm  
IP 65 opt., IP 40



**A9067137**  
SMART-CASE L, Vers. IV  
ABS (UL 94 HB)  
off-white RAL 9002  
140x62,7x30,5mm  
IP 65 opt., IP 40



**A9067139**  
SMART-CASE L, Vers. IV  
ABS (UL 94 HB)  
black RAL 9005  
140x62,7x30,5mm  
IP 65 opt., IP 40



**A9067147**  
SMART-CASE L, Vers. V  
ABS (UL 94 HB)  
off-white RAL 9002  
140x62,7x30,5mm  
IP 65 opt., IP 40



**A9067149**  
SMART-CASE L, Vers. V  
ABS (UL 94 HB)  
black RAL 9005  
140x62,7x30,5mm  
IP 65 opt., IP 40



**A9067209**  
SMART-CASE L, Vers. I  
PMMA (IR) (UL 94 HB)  
black RAL 9005  
140x62,7x30,5mm  
IP 40



**A9067219**  
SMART-CASE L, Vers. II  
PMMA (IR) (UL 94 HB)  
black RAL 9005  
140x62,7x30,5mm  
IP 65 opt., IP 40



**A9067329**  
SMART-CASE L, Vers. III  
ABS (UL 94 HB)  
black RAL 9005  
140x62,7x30,5mm  
IP 65 opt., IP 40



**A9067339**  
SMART-CASE L, Vers. IV  
ABS (UL 94 HB)  
black RAL 9005  
140x62,7x30,5mm  
IP 65 opt., IP 40



**A9067349**  
SMART-CASE L, Vers. V  
ABS (UL 94 HB)  
black RAL 9005  
140x62,7x30,5mm  
IP 65 opt., IP 40



**A9068107**  
SMART-CASE XL, Vers. I  
ABS (UL 94 HB)  
off-white RAL 9002  
168x74,4x35,4mm  
IP 40



**A9068109**  
SMART-CASE XL, Vers. I  
ABS (UL 94 HB)  
black RAL 9005  
168x74,4x35,4mm  
IP 40



**A9068117**  
SMART-CASE XL, Vers. II  
ABS (UL 94 HB)  
off-white RAL 9002  
168x74,4x35,4mm  
IP 65 opt., IP 40



**A9068119**  
SMART-CASE XL, Vers. II  
ABS (UL 94 HB)  
black RAL 9005  
168x74,4x35,4mm  
IP 65 opt., IP 40

# SMART-CASE



**A9068127**  
SMART-CASE XL, Vers. III  
ABS (UL 94 HB)  
off-white RAL 9002  
168x74,4x35,4mm  
IP 65 opt., IP 40



**A9068129**  
SMART-CASE XL, Vers. III  
ABS (UL 94 HB)  
black RAL 9005  
168x74,4x35,4mm  
IP 65 opt., IP 40



**A9068137**  
SMART-CASE XL, Vers. IV  
ABS (UL 94 HB)  
off-white RAL 9002  
168x74,4x35,4mm  
IP 65 opt., IP 40



**A9068139**  
SMART-CASE XL, Vers. IV  
ABS (UL 94 HB)  
black RAL 9005  
168x74,4x35,4mm  
IP 65 opt., IP 40



**A9068147**  
SMART-CASE XL, Vers. V  
ABS (UL 94 HB)  
off-white RAL 9002  
168x74,4x35,4mm  
IP 65 opt., IP 40



**A9068149**  
SMART-CASE XL, Vers. V  
ABS (UL 94 HB)  
black RAL 9005  
168x74,4x35,4mm  
IP 65 opt., IP 40



**A9068209**  
SMART-CASE XL, Vers. I  
PMMA (IR) (UL 94 HB)  
black RAL 9005  
168x74,4x35,4mm  
IP 40



**A9068219**  
SMART-CASE XL, Vers. II  
PMMA (IR) (UL 94 HB)  
black RAL 9005  
168x74,4x35,4mm  
IP 65 opt., IP 40



**A9068329**  
SMART-CASE XL, Vers. III  
ABS (UL 94 HB)  
black RAL 9005  
168x74,4x35,4mm  
IP 65 opt., IP 40



**A9068339**  
SMART-CASE XL, Vers. IV  
ABS (UL 94 HB)  
black RAL 9005  
168x74,4x35,4mm  
IP 65 opt., IP 40



**A9068349**  
SMART-CASE XL, Vers. V  
ABS (UL 94 HB)  
black RAL 9005  
168x74,4x35,4mm  
IP 65 opt., IP 40



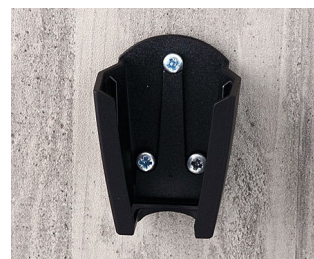
**A9166037**  
Station M  
ABS (UL 94 HB)  
off-white RAL 9002



**A9166039**  
Station M  
ABS (UL 94 HB)  
black RAL 9005



**A9166307**  
Holder M  
ABS (UL 94 HB)  
off-white RAL 9002



**A9166309**  
Holder M  
ABS (UL 94 HB)  
black RAL 9005



**A9167037**  
Station L  
ABS (UL 94 HB)  
off-white RAL 9002

# SMART-CASE



**A9167039**  
Station L  
ABS (UL 94 HB)  
black RAL 9005



**A9167307**  
Holder L  
ABS (UL 94 HB)  
off-white RAL 9002



**A9167309**  
Holder L  
ABS (UL 94 HB)  
black RAL 9005



**A9168037**  
Station XL  
ABS (UL 94 HB)  
off-white RAL 9002



**A9168039**  
Station XL  
ABS (UL 94 HB)  
black RAL 9005



**A9168307**  
Holder XL  
ABS (UL 94 HB)  
off-white RAL 9002



**A9168309**  
Holder XL  
ABS (UL 94 HB)  
black RAL 9005

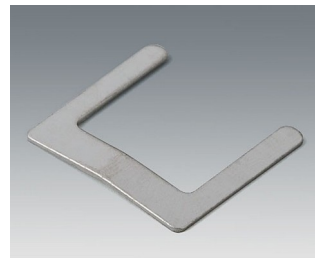
## Accessory "battery"



**A9160003**  
Plug-in contact, 1 x 9 V (PP3)



**A9166001**  
Set of battery clips, 2 x AAA  
Steel  
tin-plated



**A9166002**  
Battery contact, 2 x AAA  
Steel  
tin-plated



**A9166003**  
Battery holder, 2 x AAA  
PA 6 (UL 94 HB)  
black RAL 9005



**A9190002**  
Set of battery clips,  
2xN/2xAA/2xAAA  
Steel  
tin-plated



**A9190003**  
Set of battery clips,  
2xN/2xAA/2xAAA  
Steel  
nickel-plated

# SMART-CASE

## Accessory "station"



**A9166004**  
 Set of pull-relief  
 PA 6  
 volcano



**A9166037**  
 Station M  
 ABS (UL 94 HB)  
 off-white RAL 9002



**A9166039**  
 Station M  
 ABS (UL 94 HB)  
 black RAL 9005



**A9167037**  
 Station L  
 ABS (UL 94 HB)  
 off-white RAL 9002



**A9167039**  
 Station L  
 ABS (UL 94 HB)  
 black RAL 9005



**A9168037**  
 Station XL  
 ABS (UL 94 HB)  
 off-white RAL 9002



**A9168039**  
 Station XL  
 ABS (UL 94 HB)  
 black RAL 9005

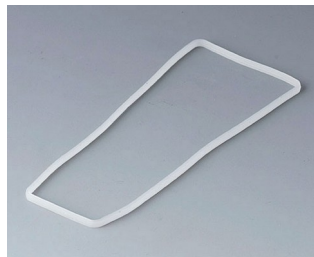


**A9193032**  
 Spring contact

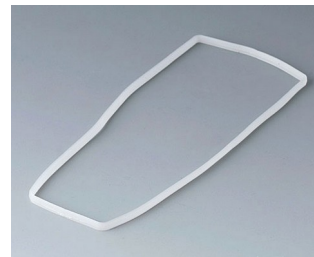
## Accessory "protection"



**A9166004**  
 Set of pull-relief  
 PA 6  
 volcano



**A9167002**  
 Sealing L



**A9168002**  
 Sealing XL

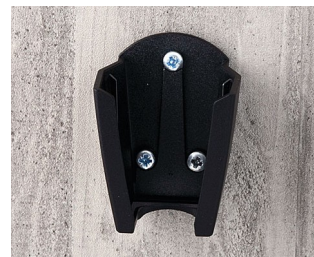
## Accessory "wall/holder"



**A9166005**  
 Adhesive foil M



**A9166307**  
 Holder M  
 ABS (UL 94 HB)  
 off-white RAL 9002



**A9166309**  
 Holder M  
 ABS (UL 94 HB)  
 black RAL 9005



**A9167005**  
 Adhesive foil L

# SMART-CASE



**A9167027**  
Holding clamp  
PA 6 (UL 94 HB)  
off-white RAL 9002



**A9167029**  
Holding clamp  
PA 6 (UL 94 HB)  
black RAL 9005



**A9167307**  
Holder L  
ABS (UL 94 HB)  
off-white RAL 9002



**A9167309**  
Holder L  
ABS (UL 94 HB)  
black RAL 9005



**A9168005**  
Adhesive foil XL



**A9168307**  
Holder XL  
ABS (UL 94 HB)  
off-white RAL 9002



**A9168309**  
Holder XL  
ABS (UL 94 HB)  
black RAL 9005

## Accessory "carrying"



**A9100001**  
Ring eyelet  
PA 6  
volcano



**A9100002**  
Ring eyelet  
PA 6  
volcano



**A9164001**  
Key ring  
Steel  
nickel-plated  
20,5mm



**A9167017**  
Belt/pocket clip  
PA 6 (UL 94 HB)  
off-white RAL 9002



**A9167019**  
Belt/pocket clip  
PA 6 (UL 94 HB)  
black RAL 9005



**B9100063**  
Carrying strap, textile lanyard  
black  
860mm

# SMART-CASE

## Accessory "screws"



A0304031  
Self-tapping screws 2.2 x 5 mm  
(PZ1)

## Accessory



A9166004  
Set of pull-relief  
PA 6  
volcano



A9166005  
Adhesive foil M



A9167005  
Adhesive foil L



A9168005  
Adhesive foil XL



A9193030  
Contact pin  
gold-plated



A9193032  
Spring contact

Salvo modifiche tecniche. © OKW Gehäusesysteme, Buchen/Germania.