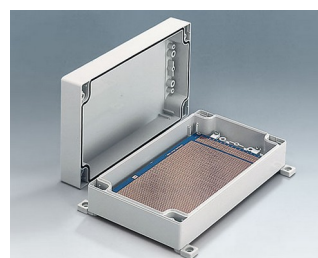
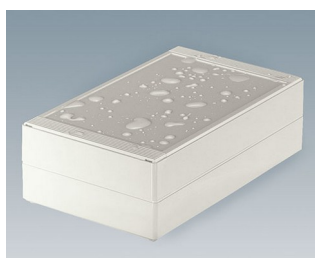
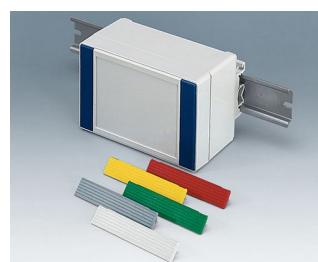
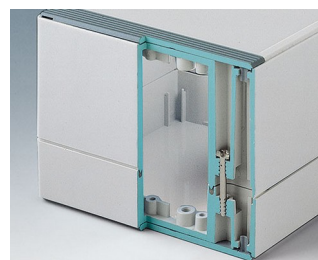


ROBUST-BOX

Uniwersalne obudowy IP 66

Dwie części obudów ROBUST-BOX mają odpowiednie rowki. W rezultacie to użytkownik wybiera, która część będzie na wierzchu.

- obudowy uniwersalne, jedenaście podstawowych rozmiarów, różne wysokości dwa standardowe materiały
- ABS (UL 94 HB), sprawdzający się do montażu terminali
- PC (UL 94 HB), solidne i wytrzymałe, o wysokiej odporności cieplnej do stosowania w niekorzystnych warunkach
- materiały obudów przepuszczające fale RF
- użyteczny do ręki, na blat lub przy montażu na ścianie, a także na szynie DIN (mocowania DIN jako akcesoria)
- łatwy montaż; można wybrać stronę obudowy
- obie części z zagłębieniem pod klawiatury membranowe i folie
- mocowania pokrywy znajdują się poza obszarem uszczelnionym; śruby mocujące są nierdzewnie i ulokowane w górnej części
- ukryte miejsca mocowania śrub
- kolorowe listwy maskujące do kodowania (jako alternatywa dla standardowej wersji w kolorze jasnoszarym)
- wewnętrzne słupki mocujące pod PCB i komponenty
- szeroka gama akcesoriów: nóżki, zawiasy, elementy mocujące szyny DIN, wsporniki do montażu PCB itp.



ROBUST-BOX

Aplikacje i przykłady

Te mocne obudowy mogą być stosowane zarówno dla urządzeń elektrycznych i elektronicznych. Na przykład ogrzewania, wentylacji, klimatyzacji, budowy maszyn i urządzeń budowlanych. Również kontrolery, czujniki i urządzenia pomiarowe.



Fill level measurement in process technology



Heating Control



Humidity and temperature measuring unit



Measuring, regulating and metering unit for water quality



Portable metal detector



Robust monitoring systems



Sensor for air pollution



Stationary gas detection system

Opcje dostosowywania

Czego potrzebujesz do spersonalizowania, swojego produktu? Dostarczamy obudowy i pokręta wraz ze wszystkimi niezbędnymi wymaganymi modyfikacjami.

Opcje dostosowywania dla Robust-Box



Obróbka obudów



Lakierowanie



Nadruk



Znakowanie laserowe



Folie dekoracyjne



Specjalne materiały



Powłoka EMC



Instalacja / montaż

ROBUST-BOX

Wersje



C0080801
Case shell 80, with groove
ABS (UL 94 HB)
light grey RAL 7035
80x80x20mm



C0080802
Case shell 80, with groove
PC (UL 94 HB)
light grey RAL 7035
80x80x20mm



C0081201
Case shell 80, with groove
ABS (UL 94 HB)
light grey RAL 7035
120x80x20mm



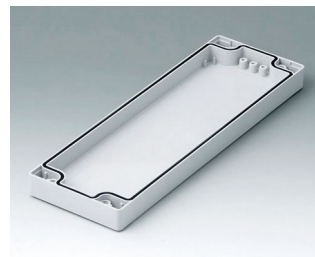
C0081202
Case shell 80, with groove
PC (UL 94 HB)
light grey RAL 7035
120x80x20mm



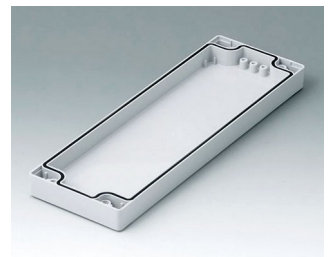
C0081601
Case shell 80, with groove
ABS (UL 94 HB)
light grey RAL 7035
160x80x20mm



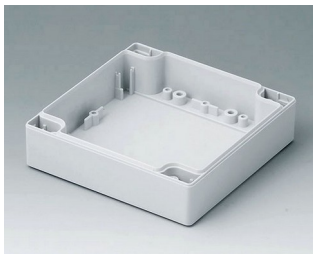
C0081602
Case shell 80, with groove
PC (UL 94 HB)
light grey RAL 7035
160x80x20mm



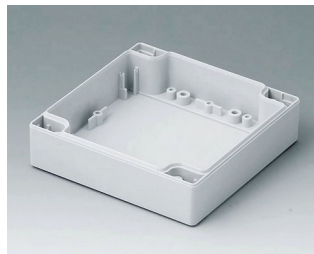
C0082401
Case shell 80, with groove
ABS (UL 94 HB)
light grey RAL 7035
240x80x20mm



C0082402
Case shell 80, with groove
PC (UL 94 HB)
light grey RAL 7035
240x80x20mm



C0121201
Case shell 120, with tongue
ABS (UL 94 HB)
light grey RAL 7035
120x120x30mm



C0121202
Case shell 120, with tongue
PC (UL 94 HB)
light grey RAL 7035
120x120x30mm



C0122001
Case shell 120, with tongue
ABS (UL 94 HB)
light grey RAL 7035
200x120x30mm



C0122002
Case shell 120, with tongue
PC (UL 94 HB)
light grey RAL 7035
200x120x30mm



C0122401
Case shell 120, with tongue
ABS (UL 94 HB)
light grey RAL 7035
240x120x30mm



C0122402
Case shell 120, with tongue
PC (UL 94 HB)
light grey RAL 7035
240x120x30mm



C0161601
Case shell 160, with tongue
ABS (UL 94 HB)
light grey RAL 7035
160x160x30mm



C0161602
Case shell 160, with tongue
PC (UL 94 HB)
light grey RAL 7035
160x160x30mm

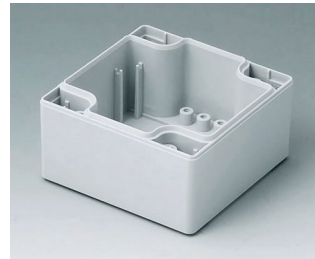
ROBUST-BOX



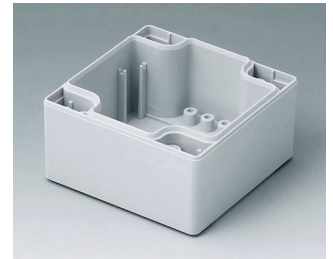
C0162401
 Case shell 160, with tongue
 ABS (UL 94 HB)
 light grey RAL 7035
 240x160x30mm



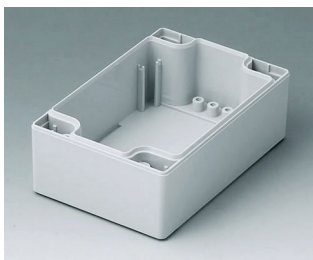
C0162402
 Case shell 160, with tongue
 PC (UL 94 HB)
 light grey RAL 7035
 240x160x30mm



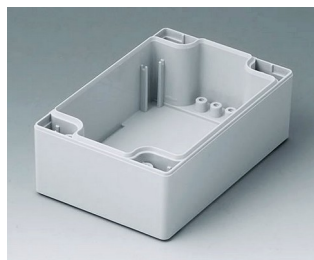
C1080801
 Case shell 80, with tongue
 ABS (UL 94 HB)
 light grey RAL 7035
 80x80x40mm



C1080802
 Case shell 80, with tongue
 PC (UL 94 HB)
 light grey RAL 7035
 80x80x40mm



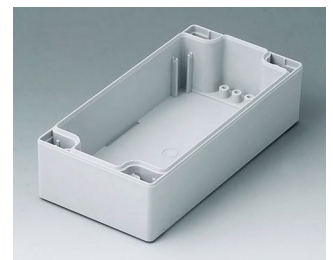
C1081201
 Case shell 80, with tongue
 ABS (UL 94 HB)
 light grey RAL 7035
 120x80x40mm



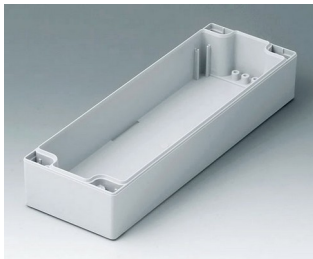
C1081202
 Case shell 80, with tongue
 PC (UL 94 HB)
 light grey RAL 7035
 120x80x40mm



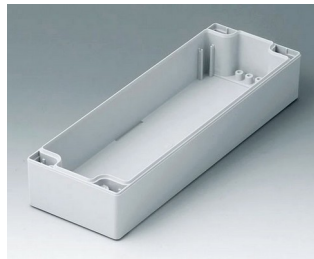
C1081601
 Case shell 80, with tongue
 ABS (UL 94 HB)
 light grey RAL 7035
 160x80x40mm



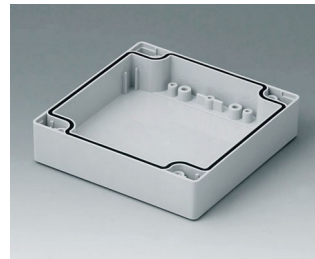
C1081602
 Case shell 80, with tongue
 PC (UL 94 HB)
 light grey RAL 7035
 160x80x40mm



C1082401
 Case shell 80, with tongue
 ABS (UL 94 HB)
 light grey RAL 7035
 240x80x40mm



C1082402
 Case shell 80, with tongue
 PC (UL 94 HB)
 light grey RAL 7035
 240x80x40mm



C1121201
 Case shell 120, with groove
 ABS (UL 94 HB)
 light grey RAL 7035
 120x120x30mm



C1121202
 Case shell 120, with groove
 PC (UL 94 HB)
 light grey RAL 7035
 120x120x30mm



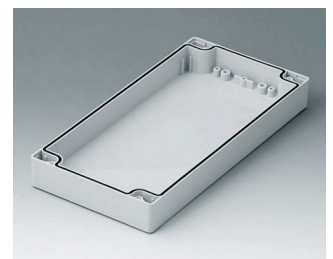
C1122001
 Case shell 120, with groove
 ABS (UL 94 HB)
 light grey RAL 7035
 200x120x30mm



C1122002
 Case shell 120, with groove
 PC (UL 94 HB)
 light grey RAL 7035
 200x120x30mm



C1122401
 Case shell 120, with groove
 ABS (UL 94 HB)
 light grey RAL 7035
 240x120x30mm



C1122402
 Case shell 120, with groove
 PC (UL 94 HB)
 light grey RAL 7035
 240x120x30mm

ROBUST-BOX



C1161601
Case shell 160, with groove
ABS (UL 94 HB)
light grey RAL 7035
160x160x30mm



C1161602
Case shell 160, with groove
PC (UL 94 HB)
light grey RAL 7035
160x160x30mm



C1162401
Case shell 160, with groove
ABS (UL 94 HB)
light grey RAL 7035
240x160x30mm



C1162402
Case shell 160, with groove
PC (UL 94 HB)
light grey RAL 7035
240x160x30mm



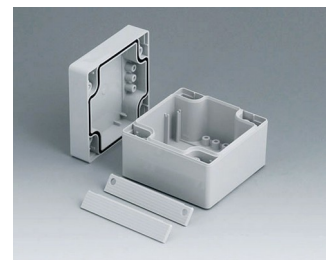
C1203001
Case shell 200, with tongue
ABS (UL 94 HB)
light grey RAL 7035
300x200x40mm



C1243601
Case shell 240, with tongue
ABS (UL 94 HB)
light grey RAL 7035
360x240x40mm



C2008081
ROBUST-BOX WIDTH 80, Vers.
I
ABS (UL 94 HB)
light grey RAL 7035
80x80x60mm
IP 66



C2008082
ROBUST-BOX WIDTH 80, Vers.
II
PC (UL 94 HB)
light grey RAL 7035
80x80x60mm
IP 66



C2008121
ROBUST-BOX WIDTH 80, Vers.
I
ABS (UL 94 HB)
light grey RAL 7035
120x80x60mm
IP 66



C2008122
ROBUST-BOX WIDTH 80, Vers.
II
PC (UL 94 HB)
light grey RAL 7035
120x80x60mm
IP 66



C2008161
ROBUST-BOX WIDTH 80, Vers.
I
ABS (UL 94 HB)
light grey RAL 7035
160x80x60mm
IP 66



C2008162
ROBUST-BOX WIDTH 80, Vers.
II
PC (UL 94 HB)
light grey RAL 7035
160x80x60mm
IP 66



C2008241
ROBUST-BOX WIDTH 80, Vers.
I
ABS (UL 94 HB)
light grey RAL 7035
240x80x60mm
IP 66



C2008242
ROBUST-BOX WIDTH 80, Vers.
II
PC (UL 94 HB)
light grey RAL 7035
240x80x60mm
IP 66



C2012121
ROBUST-BOX WIDTH 120,
Vers. I
ABS (UL 94 HB)
light grey RAL 7035
120x120x60mm
IP 66



C2012122
ROBUST-BOX WIDTH 120,
Vers. II
PC (UL 94 HB)
light grey RAL 7035
120x120x60mm
IP 66

ROBUST-BOX



C2012201
ROBUST-BOX WIDTH 120,
Vers. I
ABS (UL 94 HB)
light grey RAL 7035
200x120x60mm
IP 66



C2012202
ROBUST-BOX WIDTH 120,
Vers. II
PC (UL 94 HB)
light grey RAL 7035
200x120x60mm
IP 66



C2012241
ROBUST-BOX WIDTH 120,
Vers. I
ABS (UL 94 HB)
light grey RAL 7035
240x120x60mm
IP 66



C2012242
ROBUST-BOX WIDTH 120,
Vers. II
PC (UL 94 HB)
light grey RAL 7035
240x120x60mm
IP 66



C2016161
ROBUST-BOX WIDTH 160,
Vers. I
ABS (UL 94 HB)
light grey RAL 7035
160x160x60mm
IP 66



C2016162
ROBUST-BOX WIDTH 160,
Vers. II
PC (UL 94 HB)
light grey RAL 7035
160x160x60mm
IP 66



C2016241
ROBUST-BOX WIDTH 160,
Vers. I
ABS (UL 94 HB)
light grey RAL 7035
240x160x60mm
IP 66



C2016242
ROBUST-BOX WIDTH 160,
Vers. II
PC (UL 94 HB)
light grey RAL 7035
240x160x60mm
IP 66



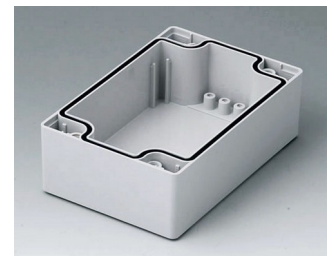
C2080801
Case shell 80, with groove
ABS (UL 94 HB)
light grey RAL 7035
80x80x40mm



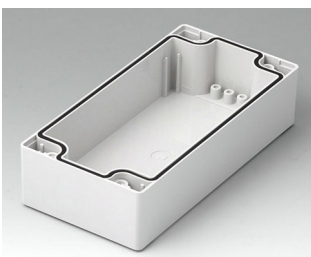
C2080802
Case shell 80, with groove
PC (UL 94 HB)
light grey RAL 7035
80x80x40mm



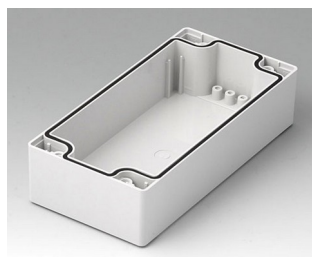
C2081201
Case shell 80, with groove
ABS (UL 94 HB)
light grey RAL 7035
120x80x40mm



C2081202
Case shell 80, with groove
PC (UL 94 HB)
light grey RAL 7035
120x80x40mm



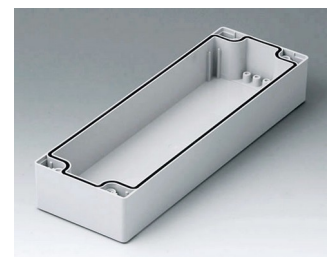
C2081601
Case shell 80, with groove
ABS (UL 94 HB)
light grey RAL 7035
160x80x40mm



C2081602
Case shell 80, with groove
PC (UL 94 HB)
light grey RAL 7035
160x80x40mm

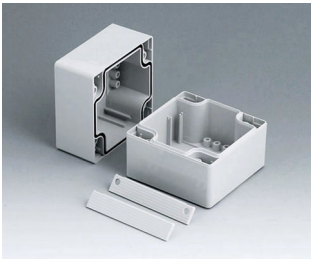


C2082401
Case shell 80, with groove
ABS (UL 94 HB)
light grey RAL 7035
240x80x40mm

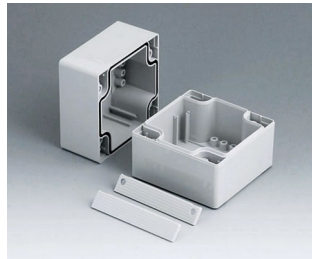


C2082402
Case shell 80, with groove
PC (UL 94 HB)
light grey RAL 7035
240x80x40mm

ROBUST-BOX



C2108081
ROBUST-BOX WIDTH 80, Vers. I
ABS (UL 94 HB)
light grey RAL 7035
80x80x80mm
IP 66



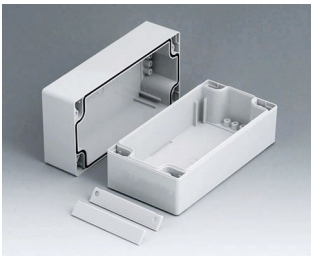
C2108082
ROBUST-BOX WIDTH 80, Vers. II
PC (UL 94 HB)
light grey RAL 7035
80x80x80mm
IP 66



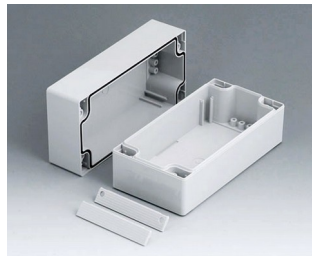
C2108121
ROBUST-BOX WIDTH 80, Vers. I
ABS (UL 94 HB)
light grey RAL 7035
120x80x80mm
IP 66



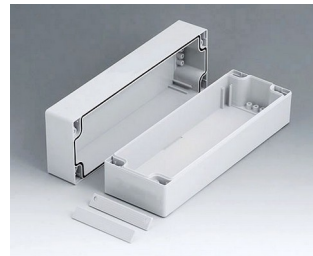
C2108122
ROBUST-BOX WIDTH 80, Vers. II
PC (UL 94 HB)
light grey RAL 7035
120x80x80mm
IP 66



C2108161
ROBUST-BOX WIDTH 80, Vers. I
ABS (UL 94 HB)
light grey RAL 7035
160x80x80mm
IP 66



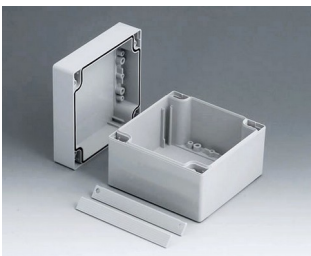
C2108162
ROBUST-BOX WIDTH 80, Vers. II
PC (UL 94 HB)
light grey RAL 7035
160x80x80mm
IP 66



C2108241
ROBUST-BOX WIDTH 80, Vers. I
ABS (UL 94 HB)
light grey RAL 7035
240x80x80mm
IP 66



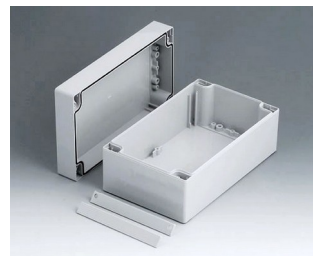
C2108242
ROBUST-BOX WIDTH 80, Vers. II
PC (UL 94 HB)
light grey RAL 7035
240x80x80mm
IP 66



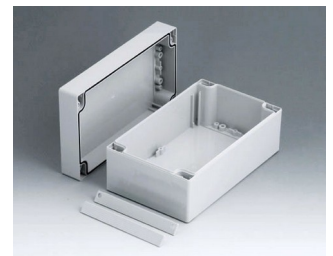
C2112121
ROBUST-BOX WIDTH 120, Vers. I
ABS (UL 94 HB)
light grey RAL 7035
120x120x90mm
IP 66



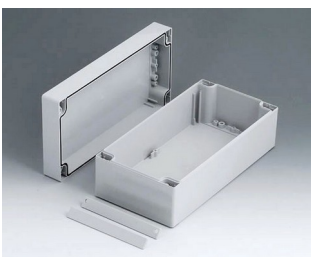
C2112122
ROBUST-BOX WIDTH 120, Vers. II
PC (UL 94 HB)
light grey RAL 7035
120x120x90mm
IP 66



C2112201
ROBUST-BOX WIDTH 120, Vers. I
ABS (UL 94 HB)
light grey RAL 7035
200x120x90mm
IP 66



C2112202
ROBUST-BOX WIDTH 120, Vers. II
PC (UL 94 HB)
light grey RAL 7035
200x120x90mm
IP 66



C2112241
ROBUST-BOX WIDTH 120, Vers. I
ABS (UL 94 HB)
light grey RAL 7035
240x120x90mm
IP 66



C2112242
ROBUST-BOX WIDTH 120, Vers. II
PC (UL 94 HB)
light grey RAL 7035
240x120x90mm
IP 66



C2116161
ROBUST-BOX WIDTH 160, Vers. I
ABS (UL 94 HB)
light grey RAL 7035
160x160x90mm
IP 66



C2116162
ROBUST-BOX WIDTH 160, Vers. II
PC (UL 94 HB)
light grey RAL 7035
160x160x90mm
IP 66

ROBUST-BOX



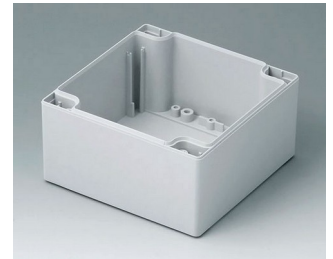
C2116241
ROBUST-BOX WIDTH 160,
Vers. I
ABS (UL 94 HB)
light grey RAL 7035
240x160x90mm
IP 66



C2116242
ROBUST-BOX WIDTH 160,
Vers. II
PC (UL 94 HB)
light grey RAL 7035
240x160x90mm
IP 66



C2120301
ROBUST-BOX WIDTH 200,
Vers. I
ABS (UL 94 HB)
light grey RAL 7035
300x200x80mm
IP 66



C2121201
Case shell 120, with tongue
ABS (UL 94 HB)
light grey RAL 7035
120x120x60mm



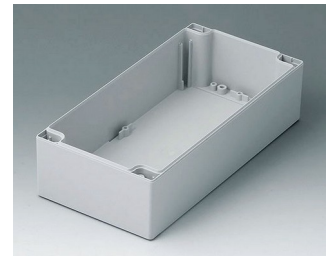
C2121202
Case shell 120, with tongue
PC (UL 94 HB)
light grey RAL 7035
120x120x60mm



C2122001
Case shell 120, with tongue
ABS (UL 94 HB)
light grey RAL 7035
200x120x60mm



C2122002
Case shell 120, with tongue
PC (UL 94 HB)
light grey RAL 7035
200x120x60mm



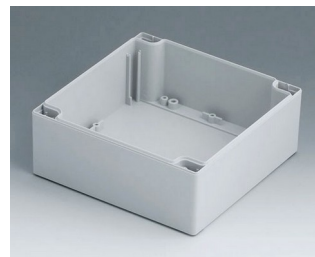
C2122401
Case shell 120, with tongue
ABS (UL 94 HB)
light grey RAL 7035
240x120x60mm



C2122402
Case shell 120, with tongue
PC (UL 94 HB)
light grey RAL 7035
240x120x60mm



C2124361
ROBUST-BOX WIDTH 240,
Vers. I
ABS (UL 94 HB)
light grey RAL 7035
360x240x80mm
IP 66



C2161601
Case shell 160, with tongue
ABS (UL 94 HB)
light grey RAL 7035
160x160x60mm



C2161602
Case shell 160, with tongue
PC (UL 94 HB)
light grey RAL 7035
160x160x60mm



C2162401
Case shell 160, with tongue
ABS (UL 94 HB)
light grey RAL 7035
240x160x60mm



C2162402
Case shell 160, with tongue
PC (UL 94 HB)
light grey RAL 7035
240x160x60mm



C2203001
Case shell 200, with groove
ABS (UL 94 HB)
light grey RAL 7035
300x200x40mm



C2243601
Case shell 240, with groove
ABS (UL 94 HB)
light grey RAL 7035
360x240x40mm

ROBUST-BOX



C2416241
ROBUST-BOX WIDTH 160,
Vers. I
ABS (UL 94 HB)
light grey RAL 7035
240x160x120mm
IP 66



C2416242
ROBUST-BOX WIDTH 160,
Vers. II
PC (UL 94 HB)
light grey RAL 7035
240x160x120mm
IP 66



C2420301
ROBUST-BOX WIDTH 200,
Vers. I
ABS (UL 94 HB)
light grey RAL 7035
300x200x120mm
IP 66



C2424361
ROBUST-BOX WIDTH 240,
Vers. I
ABS (UL 94 HB)
light grey RAL 7035
360x240x120mm
IP 66



C2520301
ROBUST-BOX WIDTH 200,
Vers. I
ABS (UL 94 HB)
light grey RAL 7035
300x200x160mm
IP 66



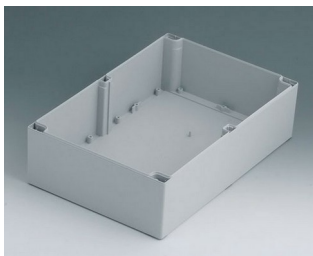
C2524361
ROBUST-BOX WIDTH 240,
Vers. I
ABS (UL 94 HB)
light grey RAL 7035
360x240x160mm
IP 66



C3162401
Case shell 160, with groove
ABS (UL 94 HB)
light grey RAL 7035
240x160x60mm



C3162402
Case shell 160, with groove
PC (UL 94 HB)
light grey RAL 7035
240x160x60mm



C4203001
Case shell 200, with tongue
ABS (UL 94 HB)
light grey RAL 7035
300x200x80mm



C4243601
Case shell 240, with tongue
ABS (UL 94 HB)
light grey RAL 7035
360x240x80mm



C5203001
Case shell 200, with groove
ABS (UL 94 HB)
light grey RAL 7035
300x200x80mm



C5243601
Case shell 240, with groove
ABS (UL 94 HB)
light grey RAL 7035
360x240x80mm

System components to complete



C0080801
Case shell 80, with groove
ABS (UL 94 HB)
light grey RAL 7035
80x80x20mm



C0080802
Case shell 80, with groove
PC (UL 94 HB)
light grey RAL 7035
80x80x20mm



C0081201
Case shell 80, with groove
ABS (UL 94 HB)
light grey RAL 7035
120x80x20mm



C0081202
Case shell 80, with groove
PC (UL 94 HB)
light grey RAL 7035
120x80x20mm

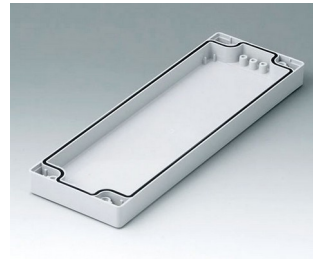
ROBUST-BOX



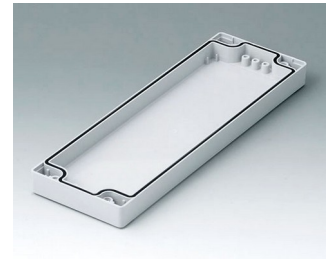
C0081601
Case shell 80, with groove
ABS (UL 94 HB)
light grey RAL 7035
160x80x20mm



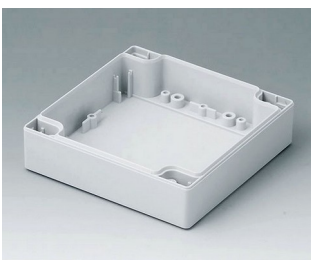
C0081602
Case shell 80, with groove
PC (UL 94 HB)
light grey RAL 7035
160x80x20mm



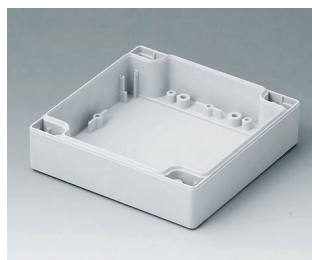
C0082401
Case shell 80, with groove
ABS (UL 94 HB)
light grey RAL 7035
240x80x20mm



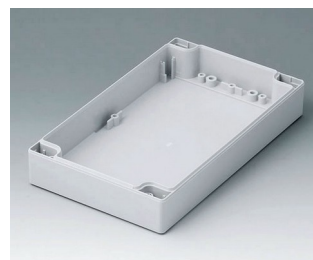
C0082402
Case shell 80, with groove
PC (UL 94 HB)
light grey RAL 7035
240x80x20mm



C0121201
Case shell 120, with tongue
ABS (UL 94 HB)
light grey RAL 7035
120x120x30mm



C0121202
Case shell 120, with tongue
PC (UL 94 HB)
light grey RAL 7035
120x120x30mm



C0122001
Case shell 120, with tongue
ABS (UL 94 HB)
light grey RAL 7035
200x120x30mm



C0122002
Case shell 120, with tongue
PC (UL 94 HB)
light grey RAL 7035
200x120x30mm



C0122401
Case shell 120, with tongue
ABS (UL 94 HB)
light grey RAL 7035
240x120x30mm



C0122402
Case shell 120, with tongue
PC (UL 94 HB)
light grey RAL 7035
240x120x30mm



C0161601
Case shell 160, with tongue
ABS (UL 94 HB)
light grey RAL 7035
160x160x30mm



C0161602
Case shell 160, with tongue
PC (UL 94 HB)
light grey RAL 7035
160x160x30mm



C0162401
Case shell 160, with tongue
ABS (UL 94 HB)
light grey RAL 7035
240x160x30mm



C0162402
Case shell 160, with tongue
PC (UL 94 HB)
light grey RAL 7035
240x160x30mm

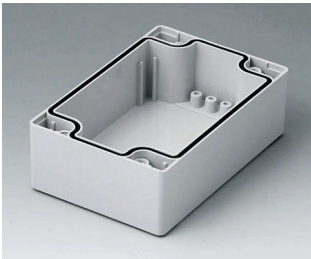


C2080801
Case shell 80, with groove
ABS (UL 94 HB)
light grey RAL 7035
80x80x40mm

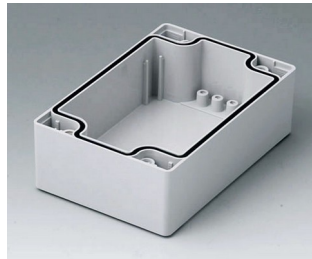


C2080802
Case shell 80, with groove
PC (UL 94 HB)
light grey RAL 7035
80x80x40mm

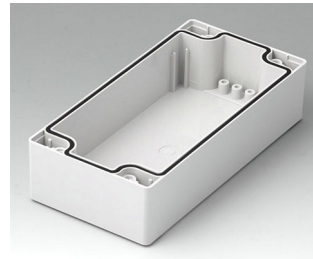
ROBUST-BOX



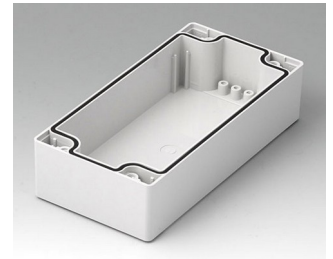
C2081201
Case shell 80, with groove
ABS (UL 94 HB)
light grey RAL 7035
120x80x40mm



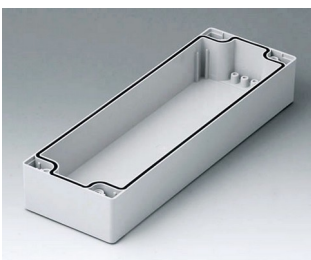
C2081202
Case shell 80, with groove
PC (UL 94 HB)
light grey RAL 7035
120x80x40mm



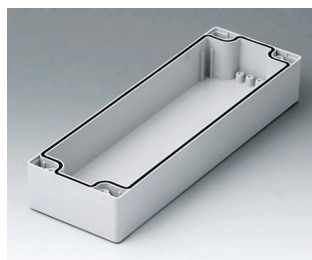
C2081601
Case shell 80, with groove
ABS (UL 94 HB)
light grey RAL 7035
160x80x40mm



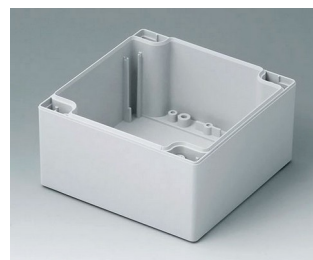
C2081602
Case shell 80, with groove
PC (UL 94 HB)
light grey RAL 7035
160x80x40mm



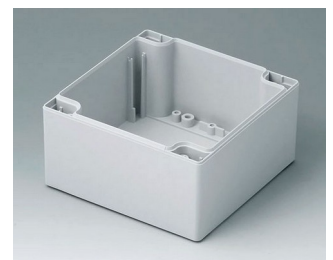
C2082401
Case shell 80, with groove
ABS (UL 94 HB)
light grey RAL 7035
240x80x40mm



C2082402
Case shell 80, with groove
PC (UL 94 HB)
light grey RAL 7035
240x80x40mm



C2121201
Case shell 120, with tongue
ABS (UL 94 HB)
light grey RAL 7035
120x120x60mm



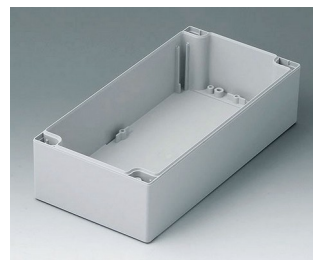
C2121202
Case shell 120, with tongue
PC (UL 94 HB)
light grey RAL 7035
120x120x60mm



C2122001
Case shell 120, with tongue
ABS (UL 94 HB)
light grey RAL 7035
200x120x60mm



C2122002
Case shell 120, with tongue
PC (UL 94 HB)
light grey RAL 7035
200x120x60mm



C2122401
Case shell 120, with tongue
ABS (UL 94 HB)
light grey RAL 7035
240x120x60mm



C2122402
Case shell 120, with tongue
PC (UL 94 HB)
light grey RAL 7035
240x120x60mm



C2161601
Case shell 160, with tongue
ABS (UL 94 HB)
light grey RAL 7035
160x160x60mm



C2161602
Case shell 160, with tongue
PC (UL 94 HB)
light grey RAL 7035
160x160x60mm



C2162401
Case shell 160, with tongue
ABS (UL 94 HB)
light grey RAL 7035
240x160x60mm



C2162402
Case shell 160, with tongue
PC (UL 94 HB)
light grey RAL 7035
240x160x60mm

ROBUST-BOX



C2203001
Case shell 200, with groove
ABS (UL 94 HB)
light grey RAL 7035
300x200x40mm



C2243601
Case shell 240, with groove
ABS (UL 94 HB)
light grey RAL 7035
360x240x40mm



C2299001
Assembly kit



C2299002
Assembly kit



C5203001
Case shell 200, with groove
ABS (UL 94 HB)
light grey RAL 7035
300x200x80mm



C5243601
Case shell 240, with groove
ABS (UL 94 HB)
light grey RAL 7035
360x240x80mm

Accessory to complete



C2200801
Cover strips 80, without holes
PC (UL 94 HB)
light grey RAL 7035



C2201082
Cover strips 80
PC (UL 94 HB)
silver grey RAL 7001



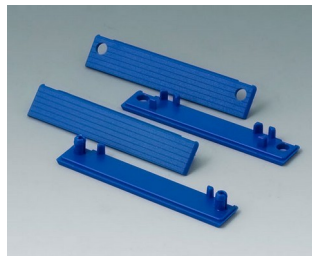
C2201084
Cover strips 80
PC (UL 94 HB)
red RAL 3020



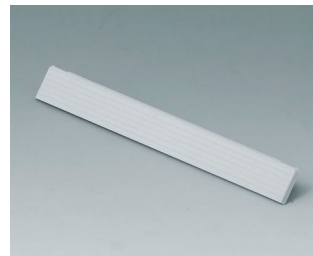
C2201085
Cover strips 80
PC (UL 94 HB)
yellow RAL 1023



C2201086
Cover strips 80
PC (UL 94 HB)
green RAL 6024



C2201087
Cover strips 80
PC (UL 94 HB)
blue RAL 5017



C2201201
Cover strips 120, without holes
PC (UL 94 HB)
light grey RAL 7035



C2201601
Cover strips 160, without holes
PC (UL 94 HB)
light grey RAL 7035

ROBUST-BOX



C2202001
Cover strips 200, without holes
PC (UL 94 HB)
light grey RAL 7035



C2202401
Cover strips 240, without holes
PC (UL 94 HB)
light grey RAL 7035



C2203123
Cover strips 120
PC (UL 94 HB)
silver grey RAL 7001



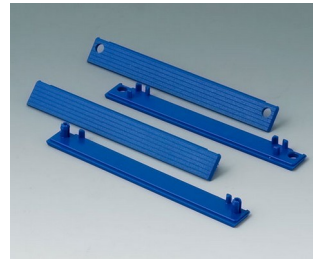
C2203124
Cover strips 120
PC (UL 94 HB)
red RAL 3020



C2203125
Cover strips 120
PC (UL 94 HB)
yellow RAL 1023



C2203126
Cover strips 120
PC (UL 94 HB)
green RAL 6024



C2203127
Cover strips 120
PC (UL 94 HB)
blue RAL 5017



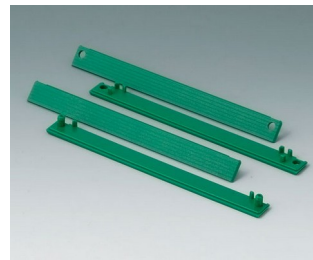
C2204162
Cover strips 160
PC (UL 94 HB)
silver grey RAL 7001



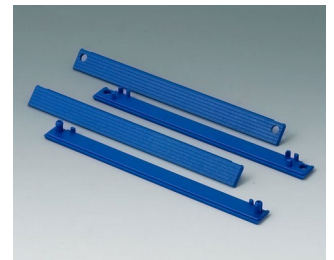
C2204164
Cover strips 160
PC (UL 94 HB)
red RAL 3020



C2204165
Cover strips 160
PC (UL 94 HB)
yellow RAL 1023



C2204166
Cover strips 160
PC (UL 94 HB)
green RAL 6024



C2204167
Cover strips 160
PC (UL 94 HB)
blue RAL 5017



C2210801
Cover strips 80, with holes
PC (UL 94 HB)
light grey RAL 7035



C2211201
Cover strips 120, with holes
PC (UL 94 HB)
light grey RAL 7035



C2211601
Cover strips 160, with holes
PC (UL 94 HB)
light grey RAL 7035



C2212001
Cover strips 200, with holes
PC (UL 94 HB)
light grey RAL 7035

ROBUST-BOX



C2212401
Cover strips 240, with holes
PC (UL 94 HB)
light grey RAL 7035

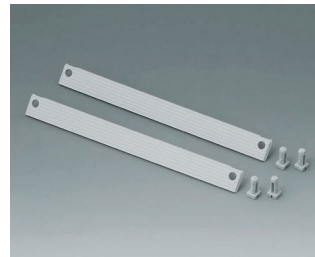
Accessory "protection"



C2299040
Security plug
PA 6 (UL 94 HB)
light grey RAL 7035



C2299042
Security kit width 120
PA 6 (UL 94 HB)
light grey RAL 7035



C2299046
Security kit width 160
PA 6 (UL 94 HB)
light grey RAL 7035



C2299048
Security kit width 80
PA 6 (UL 94 HB)
light grey RAL 7035



C2306917
Pressure equalisation element
M6x0.75
PA 6 (UL 94 HB)
light grey RAL 7035
IP 56



C2310917
Pressure equalisation element
M10x1
PA 6 (UL 94 HB)
light grey RAL 7035
IP 56

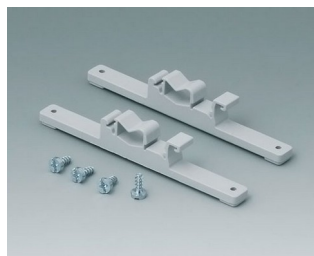


C2320137
Cable grommet
EPDM
light grey RAL 7035
IP 67

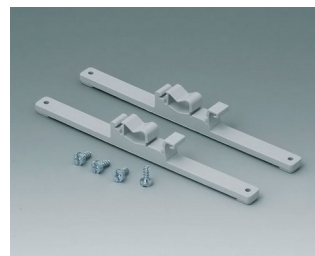
Accessory "wall/holder"



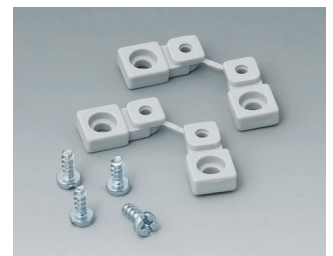
C2201088
Fastening elements to DIN-Rails
PA 6
light grey RAL 7035



C2203128
Fastening elements to DIN-Rails
PA 6
light grey RAL 7035



C2204168
Fastening elements to DIN-Rails
PA 6
light grey RAL 7035



C2299028
Wall mounting brackets
PA 6 (UL 94 HB)
light grey RAL 7035

ROBUST-BOX



C2299031
Securing hinge for the cover
PP
natural-coloured



C2299088
Hinge
PA 6
light grey RAL 7035

Accessory "screws"



A0306031
Self-tapping screws 3 x 6 mm
(PZ1)

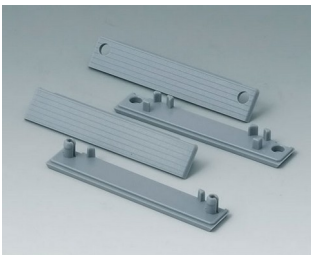


A0308031
Self-tapping screws 3 x 8 mm
(PZ1)



A0308132
Self-tapping screw 3 x 8 mm
(T10)
Stainless steel

Accessory



C2201082
Cover strips 80
PC (UL 94 HB)
silver grey RAL 7001



C2201084
Cover strips 80
PC (UL 94 HB)
red RAL 3020



C2201085
Cover strips 80
PC (UL 94 HB)
yellow RAL 1023



C2201086
Cover strips 80
PC (UL 94 HB)
green RAL 6024



C2201087
Cover strips 80
PC (UL 94 HB)
blue RAL 5017



C2203123
Cover strips 120
PC (UL 94 HB)
silver grey RAL 7001



C2203124
Cover strips 120
PC (UL 94 HB)
red RAL 3020



C2203125
Cover strips 120
PC (UL 94 HB)
yellow RAL 1023

ROBUST-BOX



C2203126
Cover strips 120
PC (UL 94 HB)
green RAL 6024



C2203127
Cover strips 120
PC (UL 94 HB)
blue RAL 5017



C2204162
Cover strips 160
PC (UL 94 HB)
silver grey RAL 7001



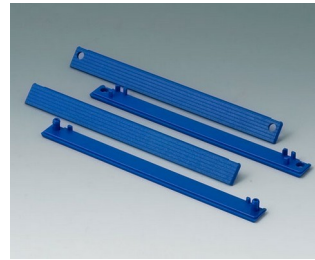
C2204164
Cover strips 160
PC (UL 94 HB)
red RAL 3020



C2204165
Cover strips 160
PC (UL 94 HB)
yellow RAL 1023



C2204166
Cover strips 160
PC (UL 94 HB)
green RAL 6024



C2204167
Cover strips 160
PC (UL 94 HB)
blue RAL 5017



C2299018
Case feet
TPE (UL 94 HB)



C2299058
PCB support
PC (UL 94 HB)
light grey RAL 7035



C2299068
PCB support
PC (UL 94 HB)
light grey RAL 7035

Subject to technical modification without notice. © by OKW Gehäusesysteme, Buchen/Germany.