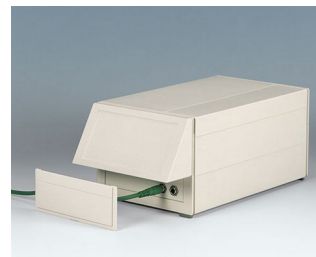
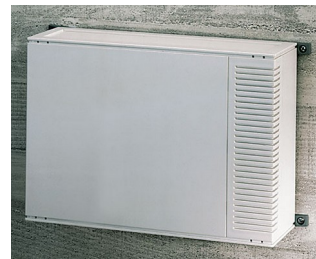
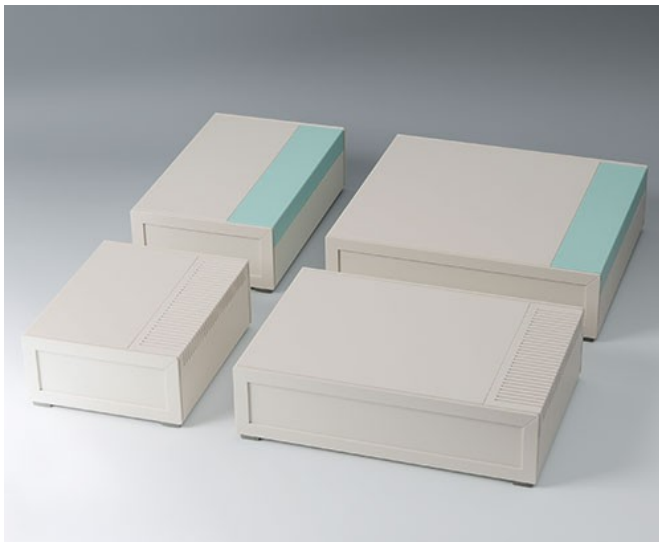


# MEDITEC

## Caixas Amplas para Instrumentos

O MEDITEC é caracterizado pelo design moderno, elegante e funcional, ideal para armazenagem de equipamentos eletrônicos contemporâneos de alta qualidade.

- design elegante e funcional
- projeto versátil para mesa de trabalho, montagem em parede e aplicações portáteis
- construção robusta com ranhuras de reforço
- técnica de fácil montagem
- quatro tamanhos planos em conformidade com PCBs nas medidas padrão europeias, dupla e estendida
- duas alturas padrão, aumentadas adicionando painéis laterais
- painel de controle com inclinação ergonômica; se também utilizar painel lateral, peça o painel de preenchimento para fechar a lacuna aberta por baixo do painel de controle inclinado
- painéis frontais e traseiros em plástico para acabamentos de superfície idênticos
- grampo lateral com/sem ranhuras de ventilação, caixas em cores ou verde lagoa, escondem os parafusos de fixação da caixa, outras cores à pedido
- quatro pés antiderrapantes com parafusos incluídos
- montagem em parede com suportes de montagem em parede opcionais
- versões com alça para aplicações portáteis, se necessário, o mecanismo de ajuste permite que o usuário defina um prático ângulo em incrementos de 30°
- pilares de parafuso internos para PCBs e componentes



# MEDITEC

## Exemplos de aplicação

Médico, dispositivos de bem-estar e laboratório, controle de gabarito, sistemas de teste e medição, periféricos de controle, modems e interfaces, comunicação e tecnologia de rede, coleção de dados, etc.



amicOx pulse oximeter



Dry milling unit for foot care



NeurOne Tesla EEG System



Pneumatic Lithotripter System

## Modificações específicas do cliente

O que você ainda precisa em seu próprio produto pessoal? Nós podemos fornecer caixas e knobs de ajuste com todas as modificações necessárias para a montagem de seus componentes eletrônicos. Opções para customizadas Meditec



Usinagem



Pintura



Impressão



Letragem a laser



Materiais especiais

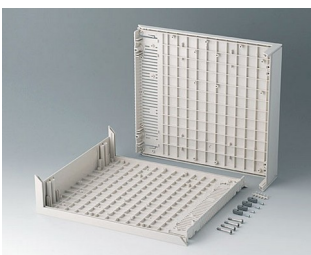


Blindagem EMC

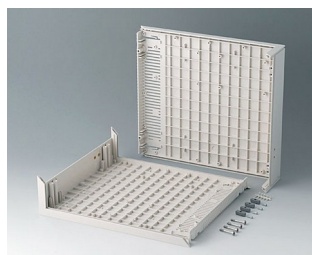


Instalação / Montagem de acessórios

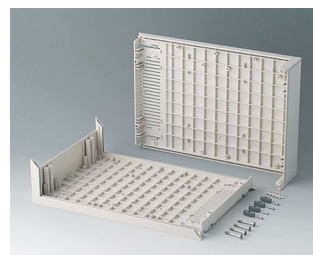
## Versões



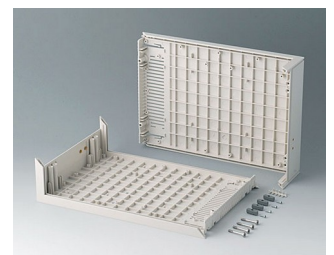
**B201007**  
L-shells D 220, without holes  
ABS (UL 94 HB)  
off-white RAL 9002  
290x260x74mm



**B201017**  
L-shells D 220, with holes for handle  
ABS (UL 94 HB)  
off-white RAL 9002  
290x260x74mm

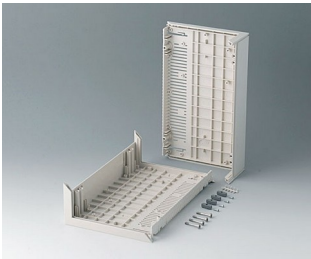


**B201107**  
L-shells D 160, without holes  
ABS (UL 94 HB)  
off-white RAL 9002  
290x200x74mm

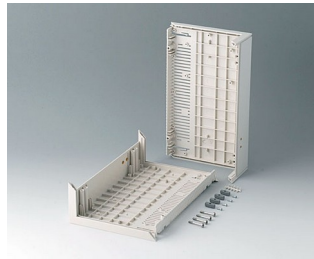


**B201117**  
L-shells D 160, with holes for handle  
ABS (UL 94 HB)  
off-white RAL 9002  
290x200x74mm

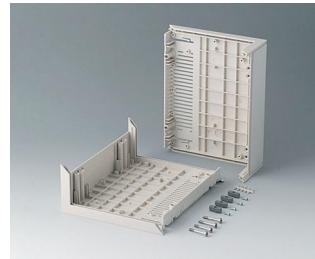
# MEDITEC



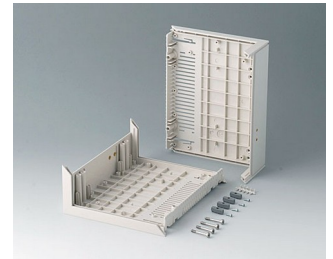
**B2012007**  
L-shells E 220, without holes  
ABS (UL 94 HB)  
off-white RAL 9002  
160x260x74mm



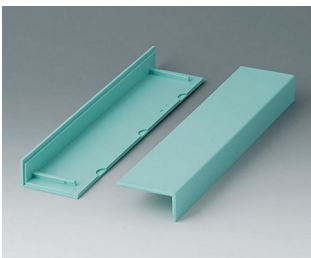
**B2012107**  
L-shells E 220, with holes for handle  
ABS (UL 94 HB)  
off-white RAL 9002  
160x260x74mm



**B2013007**  
L-shells E 160, without holes  
ABS (UL 94 HB)  
off-white RAL 9002  
160x200x74mm



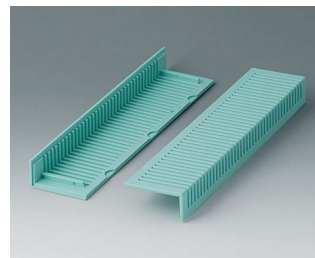
**B2013107**  
L-shells E 160, with holes for handle  
ABS (UL 94 HB)  
off-white RAL 9002  
160x200x74mm



**B2020005**  
Side trims 220, without ventilation  
ABS  
lagoon



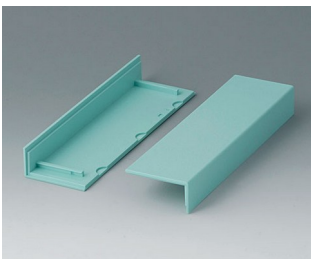
**B2020007**  
Side trims 220, without ventilation  
ABS (UL 94 HB)  
off-white RAL 9002



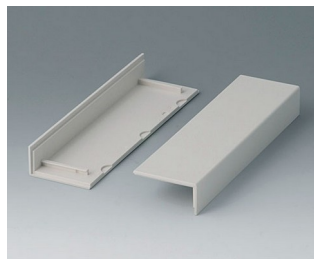
**B2021005**  
Side trims 220, with ventilation  
ABS  
lagoon



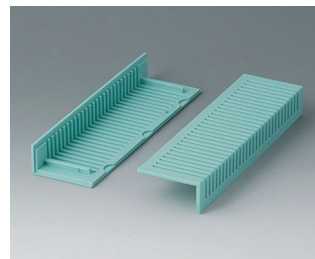
**B2021007**  
Side trims 220, with ventilation  
ABS (UL 94 HB)  
off-white RAL 9002



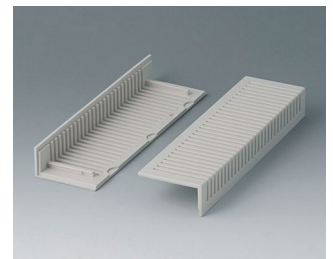
**B2022005**  
Side trims 160, without ventilation  
ABS  
lagoon



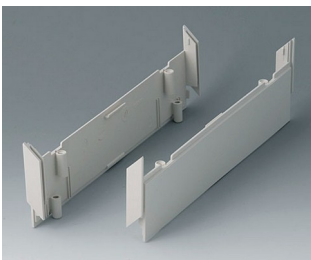
**B2022007**  
Side trims 160, without ventilation  
ABS (UL 94 HB)  
off-white RAL 9002



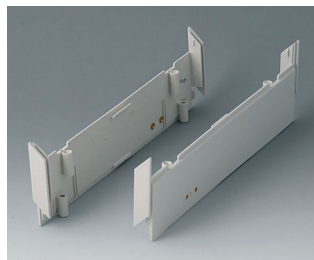
**B2023005**  
Side trims 160, with ventilation  
ABS  
lagoon



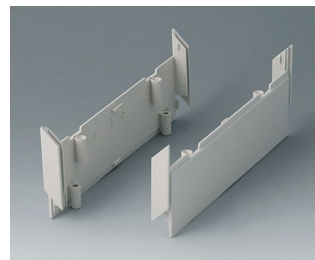
**B2023007**  
Side trims 160, with ventilation  
ABS (UL 94 HB)  
off-white RAL 9002



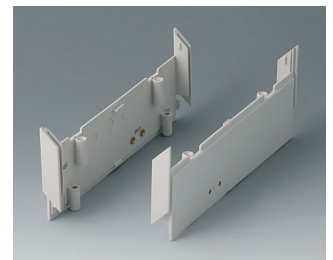
**B2030007**  
Side panels 220, without holes  
ABS (UL 94 HB)  
off-white RAL 9002



**B2030107**  
Side panels 220, with holes for handle  
ABS (UL 94 HB)  
off-white RAL 9002



**B2031007**  
Side panels 160, without holes  
ABS (UL 94 HB)  
off-white RAL 9002



**B2031107**  
Side panels 160, with holes for handle  
ABS (UL 94 HB)  
off-white RAL 9002

# MEDITEC



**B2116507**  
Handle bar E  
PA 6  
off-white RAL 9002



**B2129507**  
Handle bar D  
PA 6  
off-white RAL 9002



**B2210005**  
MEDITEC D 220, without handle  
bar  
ABS (UL 94 HB)  
off-white RAL 9002  
290x260x74mm  
IP 40



**B2210007**  
MEDITEC D 220, without handle  
bar  
ABS (UL 94 HB)  
off-white RAL 9002  
290x260x74mm  
IP 40



**B2210015**  
MEDITEC D 220, without handle  
bar  
ABS (UL 94 HB)  
off-white RAL 9002  
290x260x74mm  
IP 40



**B2210017**  
MEDITEC D 220, without handle  
bar  
ABS (UL 94 HB)  
off-white RAL 9002  
290x260x74mm  
IP 40



**B2210105**  
MEDITEC D 220, with handle  
bar  
ABS (UL 94 HB)  
off-white RAL 9002  
290x260x74mm  
IP 40



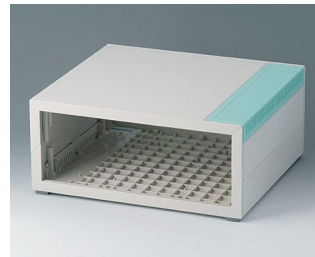
**B2210107**  
MEDITEC D 220, with handle  
bar  
ABS (UL 94 HB)  
off-white RAL 9002  
290x260x74mm  
IP 40



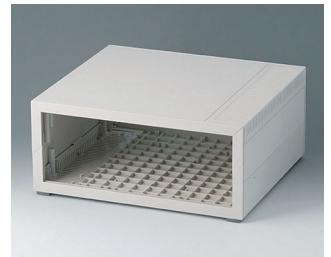
**B2210115**  
MEDITEC D 220, with handle  
bar  
ABS (UL 94 HB)  
off-white RAL 9002  
290x260x74mm  
IP 40



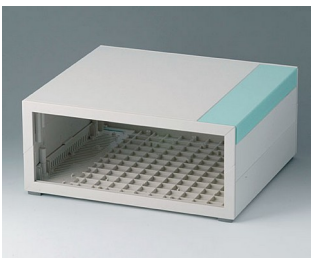
**B2210117**  
MEDITEC D 220, with handle  
bar  
ABS (UL 94 HB)  
off-white RAL 9002  
290x260x74mm  
IP 40



**B2210205**  
MEDITEC D 220, without handle  
bar  
ABS (UL 94 HB)  
off-white RAL 9002  
290x260x124mm  
IP 40



**B2210207**  
MEDITEC D 220, without handle  
bar  
ABS (UL 94 HB)  
off-white RAL 9002  
290x260x124mm  
IP 40



**B2210215**  
MEDITEC D 220, without handle  
bar  
ABS (UL 94 HB)  
off-white RAL 9002  
290x260x124mm  
IP 40



**B2210217**  
MEDITEC D 220, without handle  
bar  
ABS (UL 94 HB)  
off-white RAL 9002  
290x260x124mm  
IP 40



**B2210305**  
MEDITEC D 220, with handle  
bar  
ABS (UL 94 HB)  
off-white RAL 9002  
290x260x124mm  
IP 40



**B2210307**  
MEDITEC D 220, with handle  
bar  
ABS (UL 94 HB)  
off-white RAL 9002  
290x260x124mm  
IP 40

# MEDITEC



**B2210315**  
MEDITEC D 220, with handle bar  
ABS (UL 94 HB)  
off-white RAL 9002  
290x260x124mm  
IP 40



**B2210317**  
MEDITEC D 220, with handle bar  
ABS (UL 94 HB)  
off-white RAL 9002  
290x260x124mm  
IP 40



**B2211005**  
MEDITEC D 160, without handle bar  
ABS (UL 94 HB)  
off-white RAL 9002  
290x200x74mm  
IP 40



**B2211007**  
MEDITEC D 160, without handle bar  
ABS (UL 94 HB)  
off-white RAL 9002  
290x200x74mm  
IP 40



**B2211015**  
MEDITEC D 160, without handle bar  
ABS (UL 94 HB)  
off-white RAL 9002  
290x200x74mm  
IP 40



**B2211017**  
MEDITEC D 160, without handle bar  
ABS (UL 94 HB)  
off-white RAL 9002  
290x200x74mm  
IP 40



**B2211105**  
MEDITEC D 160, with handle bar  
ABS (UL 94 HB)  
off-white RAL 9002  
290x200x74mm  
IP 40



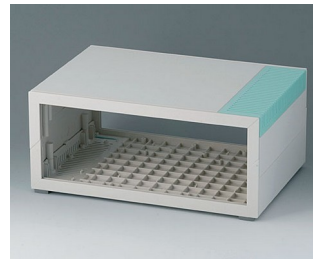
**B2211107**  
MEDITEC D 160, with handle bar  
ABS (UL 94 HB)  
off-white RAL 9002  
290x200x74mm  
IP 40



**B2211115**  
MEDITEC D 160, with handle bar  
ABS (UL 94 HB)  
off-white RAL 9002  
290x200x74mm  
IP 40



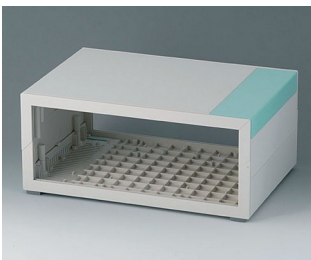
**B2211117**  
MEDITEC D 160, with handle bar  
ABS (UL 94 HB)  
off-white RAL 9002  
290x200x74mm  
IP 40



**B2211205**  
MEDITEC D 160, without handle bar  
ABS (UL 94 HB)  
off-white RAL 9002  
290x200x124mm  
IP 40



**B2211207**  
MEDITEC D 160, without handle bar  
ABS (UL 94 HB)  
off-white RAL 9002  
290x200x124mm  
IP 40



**B2211215**  
MEDITEC D 160, without handle bar  
ABS (UL 94 HB)  
off-white RAL 9002  
290x200x124mm  
IP 40



**B2211217**  
MEDITEC D 160, without handle bar  
ABS (UL 94 HB)  
off-white RAL 9002  
290x200x124mm  
IP 40



**B2211305**  
MEDITEC D 160, with handle bar  
ABS (UL 94 HB)  
off-white RAL 9002  
290x200x124mm  
IP 40



**B2211307**  
MEDITEC D 160, with handle bar  
ABS (UL 94 HB)  
off-white RAL 9002  
290x200x124mm  
IP 40

# MEDITEC



**B2211315**  
MEDITEC D 160, with handle bar  
ABS (UL 94 HB)  
off-white RAL 9002  
290x200x124mm  
IP 40



**B2211317**  
MEDITEC D 160, with handle bar  
ABS (UL 94 HB)  
off-white RAL 9002  
290x200x124mm  
IP 40



**B2212005**  
MEDITEC E 220, without handle bar  
ABS (UL 94 HB)  
off-white RAL 9002  
160x260x74mm  
IP 40



**B2212007**  
MEDITEC E 220, without handle bar  
ABS (UL 94 HB)  
off-white RAL 9002  
160x260x74mm  
IP 40



**B2212015**  
MEDITEC E 220, without handle bar  
ABS (UL 94 HB)  
off-white RAL 9002  
160x260x74mm  
IP 40



**B2212017**  
MEDITEC E 220, without handle bar  
ABS (UL 94 HB)  
off-white RAL 9002  
160x260x74mm  
IP 40



**B2212105**  
MEDITEC E 220, with handle bar  
ABS (UL 94 HB)  
off-white RAL 9002  
160x260x74mm  
IP 40



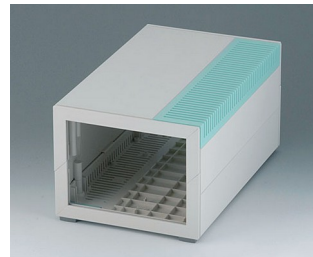
**B2212107**  
MEDITEC E 220, with handle bar  
ABS (UL 94 HB)  
off-white RAL 9002  
160x260x74mm  
IP 40



**B2212115**  
MEDITEC E 220, with handle bar  
ABS (UL 94 HB)  
off-white RAL 9002  
160x260x74mm  
IP 40



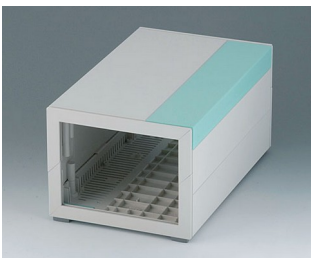
**B2212117**  
MEDITEC E 220, with handle bar  
ABS (UL 94 HB)  
off-white RAL 9002  
160x260x74mm  
IP 40



**B2212205**  
MEDITEC E 220, without handle bar  
ABS (UL 94 HB)  
off-white RAL 9002  
160x260x124mm  
IP 40



**B2212207**  
MEDITEC E 220, without handle bar  
ABS (UL 94 HB)  
off-white RAL 9002  
160x260x124mm  
IP 40



**B2212215**  
MEDITEC E 220, without handle bar  
ABS (UL 94 HB)  
off-white RAL 9002  
160x260x124mm  
IP 40



**B2212217**  
MEDITEC E 220, without handle bar  
ABS (UL 94 HB)  
off-white RAL 9002  
160x260x124mm  
IP 40



**B2212305**  
MEDITEC E 220, with handle bar  
ABS (UL 94 HB)  
off-white RAL 9002  
160x260x124mm  
IP 40



**B2212307**  
MEDITEC E 220, with handle bar  
ABS (UL 94 HB)  
off-white RAL 9002  
160x260x124mm  
IP 40

# MEDITEC



**B2212315**  
MEDITEC E 220, with handle bar  
ABS (UL 94 HB)  
off-white RAL 9002  
160x260x124mm  
IP 40



**B2212317**  
MEDITEC E 220, with handle bar  
ABS (UL 94 HB)  
off-white RAL 9002  
160x260x124mm  
IP 40



**B2213005**  
MEDITEC E 160, without handle bar  
ABS (UL 94 HB)  
off-white RAL 9002  
160x200x74mm  
IP 40



**B2213007**  
MEDITEC E 160, without handle bar  
ABS (UL 94 HB)  
off-white RAL 9002  
160x200x74mm  
IP 40



**B2213015**  
MEDITEC E 160, without handle bar  
ABS (UL 94 HB)  
off-white RAL 9002  
160x200x74mm  
IP 40



**B2213017**  
MEDITEC E 160, without handle bar  
ABS (UL 94 HB)  
off-white RAL 9002  
160x200x74mm  
IP 40



**B2213105**  
MEDITEC E 160, with handle bar  
ABS (UL 94 HB)  
off-white RAL 9002  
160x200x74mm  
IP 40



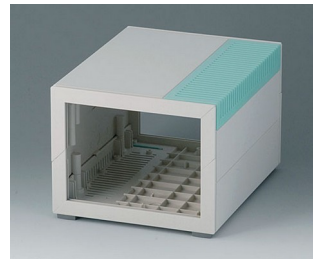
**B2213107**  
MEDITEC E 160, with handle bar  
ABS (UL 94 HB)  
off-white RAL 9002  
160x200x74mm  
IP 40



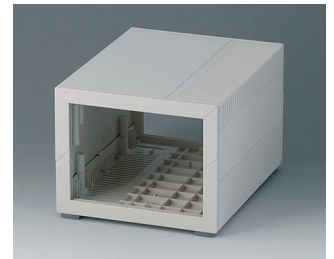
**B2213115**  
MEDITEC E 160, with handle bar  
ABS (UL 94 HB)  
off-white RAL 9002  
160x200x74mm  
IP 40



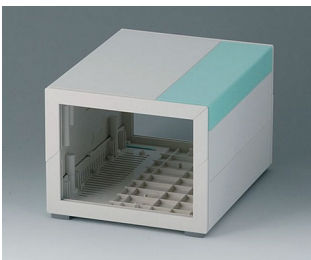
**B2213117**  
MEDITEC E 160, with handle bar  
ABS (UL 94 HB)  
off-white RAL 9002  
160x200x74mm  
IP 40



**B2213205**  
MEDITEC E 160, without handle bar  
ABS (UL 94 HB)  
off-white RAL 9002  
160x200x124mm  
IP 40



**B2213207**  
MEDITEC E 160, without handle bar  
ABS (UL 94 HB)  
off-white RAL 9002  
160x200x124mm  
IP 40



**B2213215**  
MEDITEC E 160, without handle bar  
ABS (UL 94 HB)  
off-white RAL 9002  
160x200x124mm  
IP 40



**B2213217**  
MEDITEC E 160, without handle bar  
ABS (UL 94 HB)  
off-white RAL 9002  
160x200x124mm  
IP 40



**B2213305**  
MEDITEC E 160, with handle bar  
ABS (UL 94 HB)  
off-white RAL 9002  
160x200x124mm  
IP 40



**B2213307**  
MEDITEC E 160, with handle bar  
ABS (UL 94 HB)  
off-white RAL 9002  
160x200x124mm  
IP 40

# MEDITEC

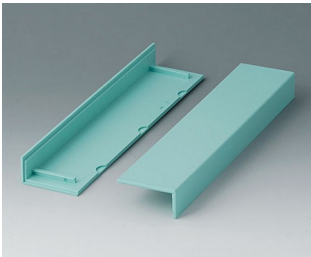


**B2213315**  
MEDITEC E 160, with handle  
bar  
ABS (UL 94 HB)  
off-white RAL 9002  
160x200x124mm  
IP 40



**B2213317**  
MEDITEC E 160, with handle  
bar  
ABS (UL 94 HB)  
off-white RAL 9002  
160x200x124mm  
IP 40

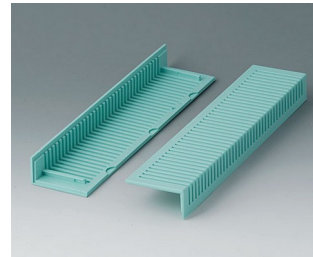
## System components to complete



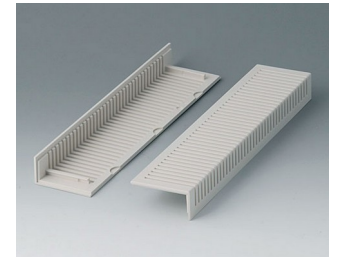
**B2020005**  
Side trims 220, without  
ventilation  
ABS  
lagoon



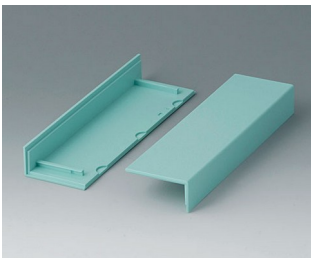
**B2020007**  
Side trims 220, without  
ventilation  
ABS (UL 94 HB)  
off-white RAL 9002



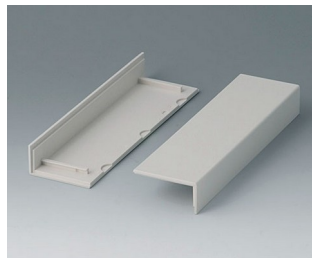
**B2021005**  
Side trims 220, with ventilation  
ABS  
lagoon



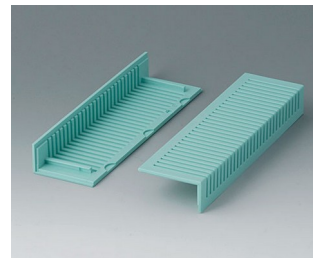
**B2021007**  
Side trims 220, with ventilation  
ABS (UL 94 HB)  
off-white RAL 9002



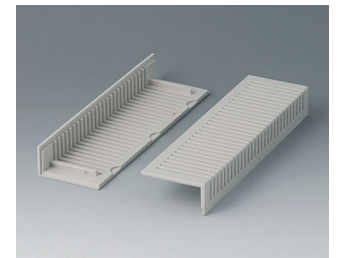
**B2022005**  
Side trims 160, without  
ventilation  
ABS  
lagoon



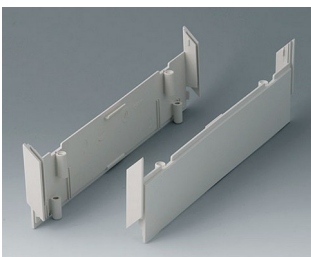
**B2022007**  
Side trims 160, without  
ventilation  
ABS (UL 94 HB)  
off-white RAL 9002



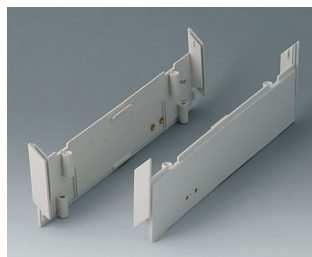
**B2023005**  
Side trims 160, with ventilation  
ABS  
lagoon



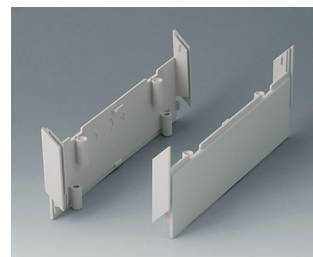
**B2023007**  
Side trims 160, with ventilation  
ABS (UL 94 HB)  
off-white RAL 9002



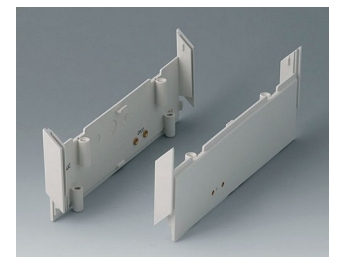
**B2030007**  
Side panels 220, without holes  
ABS (UL 94 HB)  
off-white RAL 9002



**B2030107**  
Side panels 220, with holes for  
handle  
ABS (UL 94 HB)  
off-white RAL 9002



**B2031007**  
Side panels 160, without holes  
ABS (UL 94 HB)  
off-white RAL 9002



**B2031107**  
Side panels 160, with holes for  
handle  
ABS (UL 94 HB)  
off-white RAL 9002

# MEDITEC



**B2116507**  
Handle bar E  
PA 6  
off-white RAL 9002



**B2129507**  
Handle bar D  
PA 6  
off-white RAL 9002

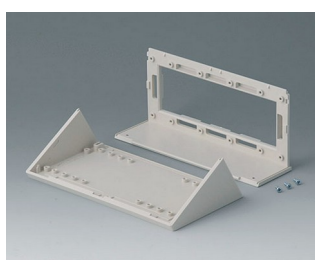


**B2133012**  
Wall mounting brackets  
PA 6  
volcano

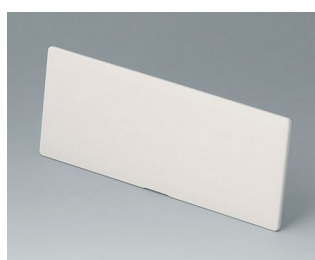


**B2135017**  
Connectors  
ABS (UL 94 HB)  
off-white RAL 9002

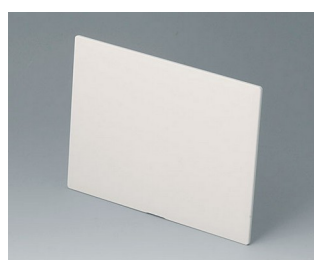
## Accessory to complete



**B2116007**  
Sloping control panel E  
ABS (UL 94 HB)  
off-white RAL 9002



**B2116307**  
Front / rear panel E, flat  
ABS (UL 94 HB)  
off-white RAL 9002  
141,6x55,6x3mm



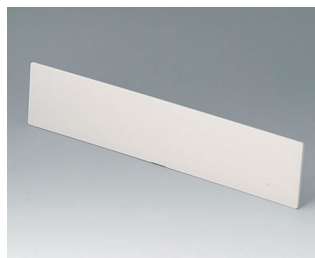
**B2116407**  
Front / rear panel Z1  
ABS (UL 94 HB)  
off-white RAL 9002  
141,6x105,6x3mm



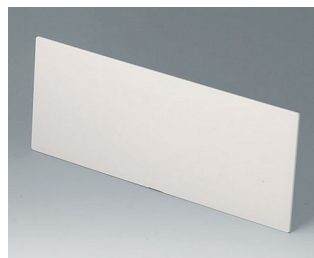
**B2116707**  
Infill panel E  
ABS (UL 94 HB)  
off-white RAL 9002  
142x55x5mm



**B2129007**  
Sloping control panel D  
ABS (UL 94 HB)  
off-white RAL 9002



**B2129307**  
Front / rear panel D, flat  
ABS (UL 94 HB)  
off-white RAL 9002  
271,6x55,6x3mm



**B2129407**  
Front / rear panel Z1  
ABS (UL 94 HB)  
off-white RAL 9002  
271,6x105,6x3mm



**B2129707**  
Infill panel D  
ABS (UL 94 HB)  
off-white RAL 9002  
272x55x5mm

## Accessory "wall/holder"



**B2133012**  
Wall mounting brackets  
PA 6  
volcano



**B2134012**  
Stacking elements  
PA 6  
volcano

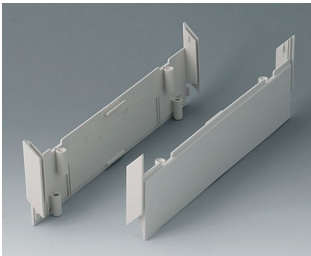
# MEDITEC

## Accessory "screws"

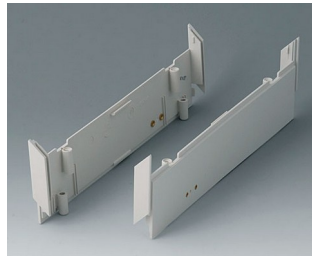


**A9199008**  
Set of screws

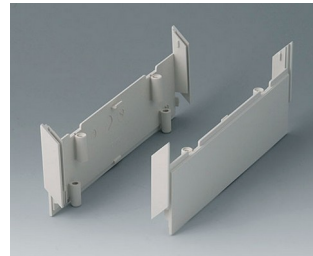
## Accessory



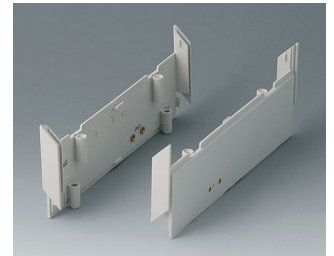
**B2030007**  
Side panels 220, without holes  
ABS (UL 94 HB)  
off-white RAL 9002



**B2030107**  
Side panels 220, with holes for  
handle  
ABS (UL 94 HB)  
off-white RAL 9002



**B2031007**  
Side panels 160, without holes  
ABS (UL 94 HB)  
off-white RAL 9002



**B2031107**  
Side panels 160, with holes for  
handle  
ABS (UL 94 HB)  
off-white RAL 9002



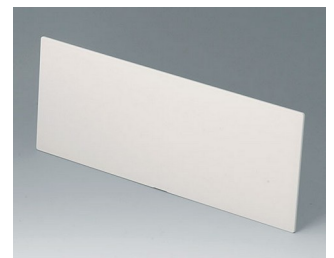
**B2116407**  
Front / rear panel Z1  
ABS (UL 94 HB)  
off-white RAL 9002  
141,6x105,6x3mm



**B2116507**  
Handle bar E  
PA 6  
off-white RAL 9002



**B2116707**  
Infill panel E  
ABS (UL 94 HB)  
off-white RAL 9002  
142x55x5mm



**B2129407**  
Front / rear panel Z1  
ABS (UL 94 HB)  
off-white RAL 9002  
271,6x105,6x3mm



**B2129507**  
Handle bar D  
PA 6  
off-white RAL 9002



**B2129707**  
Infill panel D  
ABS (UL 94 HB)  
off-white RAL 9002  
272x55x5mm



**B2134012**  
Stacking elements  
PA 6  
volcano



**B2135017**  
Connectors  
ABS (UL 94 HB)  
off-white RAL 9002

Sujeito à modificações técnicas sem aviso prévio. © de OKW Gehäusesysteme, Buchen/Alemanha.