

RAILTEC B

Versáteis Caixas para Trilho DIN

Nossa série de caixas RAILTEC B proporcionam rápida e simples montagem em trilhos DIN EN 60715 e padrão TH35.

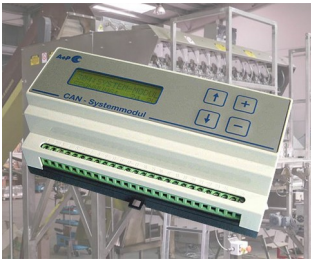
- seis tamanhos (2 a 12 módulos de largura) de acordo com DIN 43880, unidade 1
- quatro tamanhos (2, 4, 6 & 9 módulos de largura) com baixo perfil, 2 versões
- totalmente isolado e protegido de acordo com VBG 4 e IEC 529/DIN VDE 0470-1
- material resistente ao fogo (UL 94 V-0)
- **versão I:** para blocos de terminais PCB 5.0/5.08mm de tamanho
- **versão II:** para plugue de cabeçalho 5.0/5.08 mm de tamanho
- **versão III:** caixa fechada para conectores frontais, conectores D-SUB, etc.
- **versão IV:** para blocos de terminais PCB 5.0/5.08 mm de tamanho (1 linha)
- **versão V:** com perfurações eliminatórias de 5.0 mm de tamanho
- **versão VI:** caixa aberta para diferentes combinações de montagem de guardas de terminais e placa de separação; opcionalmente 1 ou 2 níveis de conexão
- tampa KNX para encaixe de 2 e 4 módulos da série VI e partes superiores planas
- adequado para trilho DIN EN 60715 TH35 ou montagem diretamente na parede
- com/sem ranhuras de ventilação para uma boa dissipação de calor
- montagem flexível: posicionamento PCB em todas as 3 direções; parte da base com torres de fixação, partes superiores com arestas de guia
- clipe de trilho DIN pré-montadas na parte da base
- tampa transparente (acessório) protege os elementos de exibição e operação
- classe de proteção < IP 40
- **NOVO:** RAILTEC BP, M22 – Variante de painel com painéis laterais encaixáveis e painel frontal, adequado para trilhos DIN EN 60715 TH35. Cobertura de proteção transparente como acessório.



RAILTEC B

Exemplos de aplicação

Uso universal como caixa de instalação. Correspondente aos regulamentos da indústria de máquinas de construção e automobilística. Smart Factory / Industrie 4.0. Equipamento técnico para automação predial e SMART-HOME. Especialmente para o equipamento de controle por exemplo sistemas de iluminação.



CAN BUS system module for packaging machines



Earthfault detection and short-circuit indicator



Energy management in data centres



Industrial Gateways



Industrial VDSL2/ADSL2 modems



Monitoring of electrical variables



Power measuring device for energy analysis



Remote meter for condition monitoring



Smart meter for electricity consumption



Water level detector

Modificações específicas do cliente

O que você ainda precisa em seu próprio produto pessoal? Nós podemos fornecer caixas e knobs de ajuste com todas as modificações necessárias para a montagem de seus componentes eletrônicos.

Opções para customizadas Railtec B

RAILTEC B



Usinagem



Pintura



Impressão



Letragem a laser



Películas decorativas



Instalação / Montagem
de acessórios

Versões



B6501110
RAILTEC B, 2 modules, Vers. V
PC (UL 94 V-0)
light grey RAL 7035
35x86x58mm



B6501111
RAILTEC B, 2 modules, Vers. I
PC (UL 94 V-0)
light grey RAL 7035
35x86x58mm



B6501112
RAILTEC B, 2 modules, Vers. II
PC (UL 94 V-0)
light grey RAL 7035
35x86x58mm



B6501113
RAILTEC B, 2 modules, Vers. III
PC (UL 94 V-0)
light grey RAL 7035
35x86x58mm



B6501114
RAILTEC B, 2 modules, Vers. I
PC (UL 94 V-0)
light grey RAL 7035
35x86x58mm



B6501115
RAILTEC B, 2 modules, Vers. II
PC (UL 94 V-0)
light grey RAL 7035
35x86x58mm



B6501116
RAILTEC B, 2 modules, Vers. III
PC (UL 94 V-0)
light grey RAL 7035
35x86x58mm



B6501117
RAILTEC B, 2 modules, Vers. IV
PC (UL 94 V-0)
light grey RAL 7035
35x86x58mm

RAILTEC B



B6501118
RAILTEC B, 2 modules, Vers. IV
PC (UL 94 V-0)
light grey RAL 7035
35x86x58mm



B6501119
RAILTEC B, 2 modules, Vers. V
PC (UL 94 V-0)
light grey RAL 7035
35x86x58mm



B6501121
RAILTEC B, 2 modules, Vers. VI
PC (UL 94 V-0)
light grey RAL 7035
35x90x58mm



B6501223
RAILTEC B, 2 modules, Vers. III
low profile
PC (UL 94 V-0)
light grey RAL 7035
35x86x31,25mm



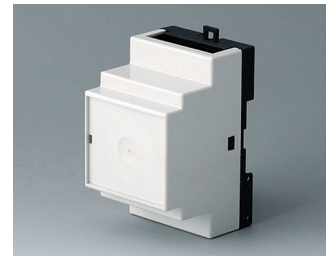
B6501229
RAILTEC B, 2 modules, Vers.
low profile
PC (UL 94 V-0)
light grey RAL 7035
35x89,6x31,25mm



B6502110
RAILTEC B, 3 modules, Vers. V
PC (UL 94 V-0)
light grey RAL 7035
52,5x86x58mm



B6502111
RAILTEC B, 3 modules, Vers. I
PC (UL 94 V-0)
light grey RAL 7035
52,5x86x58mm



B6502112
RAILTEC B, 3 modules, Vers. II
PC (UL 94 V-0)
light grey RAL 7035
52,5x86x58mm



B6502113
RAILTEC B, 3 modules, Vers. III
PC (UL 94 V-0)
light grey RAL 7035
52,5x86x58mm



B6502114
RAILTEC B, 3 modules, Vers. I
PC (UL 94 V-0)
light grey RAL 7035
52,5x86x58mm



B6502115
RAILTEC B, 3 modules, Vers. II
PC (UL 94 V-0)
light grey RAL 7035
52,5x86x58mm



B6502116
RAILTEC B, 3 modules, Vers. III
PC (UL 94 V-0)
light grey RAL 7035
52,5x86x58mm



B6502117
RAILTEC B, 3 modules, Vers. IV
PC (UL 94 V-0)
light grey RAL 7035
52,5x86x58mm



B6502118
RAILTEC B, 3 modules, Vers. IV
PC (UL 94 V-0)
light grey RAL 7035
52,5x86x58mm



B6502119
RAILTEC B, 3 modules, Vers. V
PC (UL 94 V-0)
light grey RAL 7035
52,5x86x58mm



B6502121
RAILTEC B, 3 modules, Vers. VI
PC (UL 94 V-0)
light grey RAL 7035
52,5x90x58mm

RAILTEC B



B6503110
RAILTEC B, 4 modules, Vers. V
PC (UL 94 V-0)
light grey RAL 7035
70x86x58mm



B6503111
RAILTEC B, 4 modules, Vers. I
PC (UL 94 V-0)
light grey RAL 7035
70x86x58mm



B6503112
RAILTEC B, 4 modules, Vers. II
PC (UL 94 V-0)
light grey RAL 7035
70x86x58mm



B6503113
RAILTEC B, 4 modules, Vers. III
PC (UL 94 V-0)
light grey RAL 7035
70x86x58mm



B6503114
RAILTEC B, 4 modules, Vers. I
PC (UL 94 V-0)
light grey RAL 7035
70x86x58mm



B6503115
RAILTEC B, 4 modules, Vers. II
PC (UL 94 V-0)
light grey RAL 7035
70x86x58mm



B6503116
RAILTEC B, 4 modules, Vers. III
PC (UL 94 V-0)
light grey RAL 7035
70x86x58mm



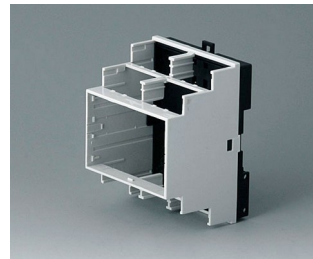
B6503117
RAILTEC B, 4 modules, Vers. IV
PC (UL 94 V-0)
light grey RAL 7035
70x86x58mm



B6503118
RAILTEC B, 4 modules, Vers. IV
PC (UL 94 V-0)
light grey RAL 7035
70x86x58mm



B6503119
RAILTEC B, 4 modules, Vers. V
PC (UL 94 V-0)
light grey RAL 7035
70x86x58mm



B6503121
RAILTEC B, 4 modules, Vers. VI
PC (UL 94 V-0)
light grey RAL 7035
70x90x58mm



B6503223
RAILTEC B, 4 modules, Vers. III
low profile
PC (UL 94 V-0)
light grey RAL 7035
70x86x31,25mm



B6503229
RAILTEC B, 4 modules, Vers.
low profile
PC (UL 94 V-0)
light grey RAL 7035
70x89,6x31,25mm



B6504110
RAILTEC B, 6 modules, Vers. V
PC (UL 94 V-0)
light grey RAL 7035
105x86x59mm



B6504111
RAILTEC B, 6 modules, Vers. I
PC (UL 94 V-0)
light grey RAL 7035
105x86x59mm



B6504112
RAILTEC B, 6 modules, Vers. II
PC (UL 94 V-0)
light grey RAL 7035
105x86x59mm

RAILTEC B



B6504113
RAILTEC B, 6 modules, Vers. III
PC (UL 94 V-0)
light grey RAL 7035
105x86x59mm



B6504114
RAILTEC B, 6 modules, Vers. I
PC (UL 94 V-0)
light grey RAL 7035
105x86x59mm



B6504115
RAILTEC B, 6 modules, Vers. II
PC (UL 94 V-0)
light grey RAL 7035
105x86x59mm



B6504116
RAILTEC B, 6 modules, Vers. III
PC (UL 94 V-0)
light grey RAL 7035
105x86x59mm



B6504117
RAILTEC B, 6 modules, Vers. IV
PC (UL 94 V-0)
light grey RAL 7035
105x86x59mm



B6504118
RAILTEC B, 6 modules, Vers. IV
PC (UL 94 V-0)
light grey RAL 7035
105x86x59mm



B6504119
RAILTEC B, 6 modules, Vers. V
PC (UL 94 V-0)
light grey RAL 7035
105x86x59mm



B6504121
RAILTEC B, 6 modules, Vers. VI
PC (UL 94 V-0)
light grey RAL 7035
105x90x58mm



B6504223
RAILTEC B, 6 modules, Vers. III
low profile
PC (UL 94 V-0)
light grey RAL 7035
105x86x31,25mm



B6504229
RAILTEC B, 6 modules, Vers.
low profile
PC (UL 94 V-0)
light grey RAL 7035
105x89,6x31,25mm



B6505110
RAILTEC B, 9 modules, Vers. V
PC (UL 94 V-0)
light grey RAL 7035
157x86x59mm



B6505111
RAILTEC B, 9 modules, Vers. I
PC (UL 94 V-0)
light grey RAL 7035
157x86x59mm



B6505112
RAILTEC B, 9 modules, Vers. II
PC (UL 94 V-0)
light grey RAL 7035
157x86x59mm



B6505113
RAILTEC B, 9 modules, Vers. III
PC (UL 94 V-0)
light grey RAL 7035
157x86x59mm



B6505114
RAILTEC B, 9 modules, Vers. I
PC (UL 94 V-0)
light grey RAL 7035
157x86x59mm



B6505115
RAILTEC B, 9 modules, Vers. II
PC (UL 94 V-0)
light grey RAL 7035
157x86x59mm

RAILTEC B



B6505116
 RAILTEC B, 9 modules, Vers. III
 PC (UL 94 V-0)
 light grey RAL 7035
 157x86x59mm



B6505117
 RAILTEC B, 9 modules, Vers. IV
 PC (UL 94 V-0)
 light grey RAL 7035
 157x86x59mm



B6505118
 RAILTEC B, 9 modules, Vers. IV
 PC (UL 94 V-0)
 light grey RAL 7035
 157x86x59mm



B6505119
 RAILTEC B, 9 modules, Vers. V
 PC (UL 94 V-0)
 light grey RAL 7035
 157x86x59mm



B6505121
 RAILTEC B, 9 modules, Vers. VI
 PC (UL 94 V-0)
 light grey RAL 7035
 157x90x58mm



B6505223
 RAILTEC B, 9 modules, Vers. III
 low profile
 PC (UL 94 V-0)
 light grey RAL 7035
 157x86x31,25mm



B6505229
 RAILTEC B, 9 modules, Vers.
 low profile
 PC (UL 94 V-0)
 light grey RAL 7035
 157,5x89,6x31,25mm



B6506110
 RAILTEC B, 12 modules, Vers. V
 PC (UL 94 V-0)
 light grey RAL 7035
 210x90x58mm



B6506111
 RAILTEC B, 12 modules, Vers. I
 PC (UL 94 V-0)
 light grey RAL 7035
 210x90x58mm



B6506112
 RAILTEC B, 12 modules, Vers. II
 PC (UL 94 V-0)
 light grey RAL 7035
 210x90x58mm



B6506113
 RAILTEC B, 12 modules, Vers.
 III
 PC (UL 94 V-0)
 light grey RAL 7035
 210x90x58mm



B6506114
 RAILTEC B, 12 modules, Vers. I
 PC (UL 94 V-0)
 light grey RAL 7035
 210x90x58mm



B6506115
 RAILTEC B, 12 modules, Vers. II
 PC (UL 94 V-0)
 light grey RAL 7035
 210x90x58mm



B6506116
 RAILTEC B, 12 modules, Vers.
 III
 PC (UL 94 V-0)
 light grey RAL 7035
 210x90x58mm



B6506117
 RAILTEC B, 12 modules, Vers.
 IV
 PC (UL 94 V-0)
 light grey RAL 7035
 210x90x58mm



B6506118
 RAILTEC B, 12 modules, Vers.
 IV
 PC (UL 94 V-0)
 light grey RAL 7035
 210x90x58mm

RAILTEC B



B6506119
RAILTEC B, 12 modules, Vers. V
PC (UL 94 V-0)
light grey RAL 7035
210x90x58mm



B6506121
RAILTEC B, 12 modules, Vers. VI
PC (UL 94 V-0)
light grey RAL 7035
210x90x58mm



B6511111
RAILTEC B, 2 modules, Vers. XI
PC (UL 94 V-0)
light grey RAL 7035
35x86x58mm



B6511112
RAILTEC B, 2 modules, Vers. XII
PC (UL 94 V-0)
light grey RAL 7035
35x86x58mm



B6511113
RAILTEC B, 2 modules, Vers. XIII
PC (UL 94 V-0)
light grey RAL 7035
35x86x58mm



B6513111
RAILTEC B, 4 modules, Vers. XI
PC (UL 94 V-0)
light grey RAL 7035
70x86x58mm



B6513112
RAILTEC B, 4 modules, Vers. XII
PC (UL 94 V-0)
light grey RAL 7035
70x86x58mm



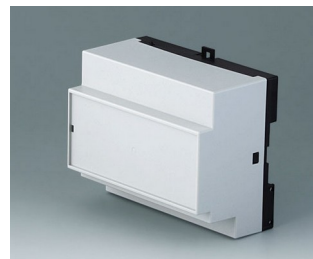
B6513113
RAILTEC B, 4 modules, Vers. XIII
PC (UL 94 V-0)
light grey RAL 7035
70x86x58mm



B6514111
RAILTEC B, 6 modules, Vers. XI
PC (UL 94 V-0)
light grey RAL 7035
105x86x59mm



B6514112
RAILTEC B, 6 modules, Vers. XII
PC (UL 94 V-0)
light grey RAL 7035
105x86x59mm



B6514113
RAILTEC B, 6 modules, Vers. XIII
PC (UL 94 V-0)
light grey RAL 7035
105x86x59mm



B6515111
RAILTEC B, 9 modules, Vers. XI
PC (UL 94 V-0)
light grey RAL 7035
157x86x59mm



B6515112
RAILTEC B, 9 modules, Vers. XII
PC (UL 94 V-0)
light grey RAL 7035
157x86x59mm



B6515113
RAILTEC B, 9 modules, Vers. XIII
PC (UL 94 V-0)
light grey RAL 7035
157x86x59mm



B6522101
RAILTEC BP, M22, with closed
side panels
PC (UL 94 V-0)
light grey RAL 7035
95x23x113mm



B6522102
RAILTEC BP, M22, closed/with
ventilation slots
PC (UL 94 V-0)
light grey RAL 7035
95x23x113mm

RAILTEC B



B6522103
 RAILTEC BP, M22, with
 ventilation slots
 PC (UL 94 V-0)
 light grey RAL 7035
 95x23x113mm

Accessory "protection"



B6622101
 Hinged cover
 transparent

Accessory "wall/holder"



B6600334
 Wall suspension elements
 PPO (UL 94 V-0)
 black

Accessory "terminals"



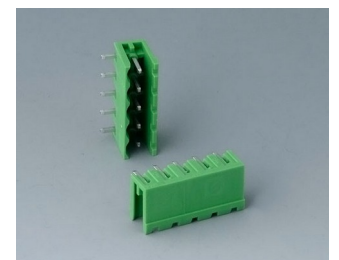
B6600111
 Terminal block, block 5.0
 PA 68 (UL 94 V-0)
 light grey



B6600222
 Plug header, block 5.08
 PA 68 (UL 94 V-0)



B6601111
 Terminal block, block 5.0
 PA 68 (UL 94 V-0)

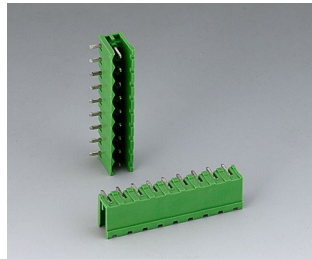


B6601222
 Plug header, block 5.08
 PA 6 (UL 94 V-0)

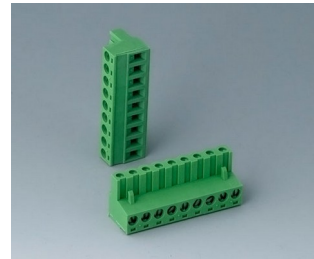
RAILTEC B



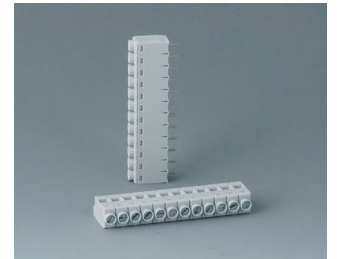
B6601223
Plug header, block 5.08
PA 6 (UL 94 V-0)



B6602222
Plug header, block 5.08
PA 6 (UL 94 V-0)



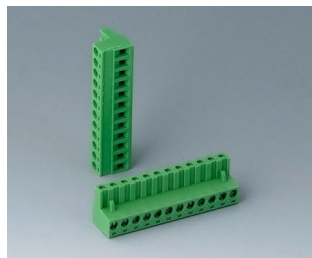
B6602223
Plug header, block 5.08
PA 6 (UL 94 V-0)



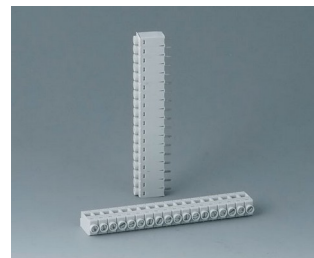
B6603111
Terminal block, block 5.0
PA 68 (UL 94 V-0)



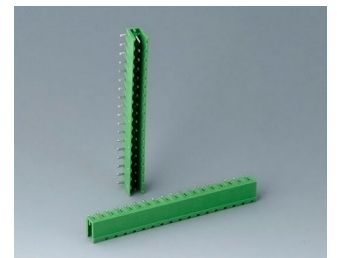
B6603222
Plug header, block 5.08
PA 6 (UL 94 V-0)



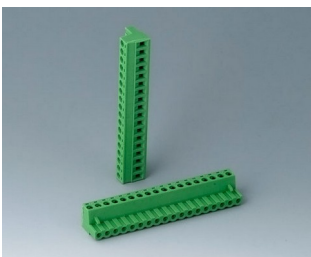
B6603223
Plug header, block 5.08
PA 6 (UL 94 V-0)



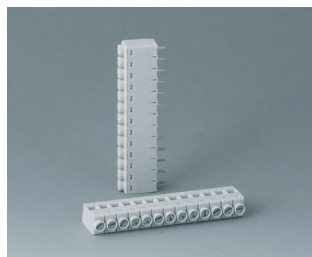
B6604111
Terminal block, block 5.0
PA 68 (UL 94 V-0)



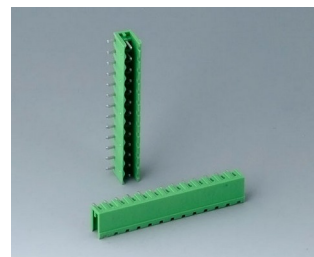
B6604222
Plug header, block 5.08
PA 68 (UL 94 V-0)



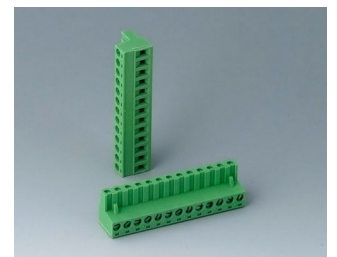
B6604223
Plug header, block 5.08
PA 68 (UL 94 V-0)



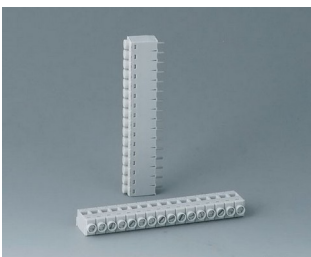
B6605111
Terminal block, block 5.0
PA 68 (UL 94 V-0)



B6605222
Plug header, block 5.08
PA 6 (UL 94 V-0)



B6605223
Plug header, block 5.08
PA 6 (UL 94 V-0)



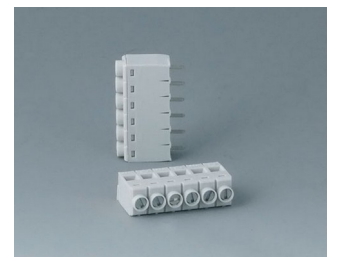
B6606111
Terminal block, block 5.0
PA 68 (UL 94 V-0)



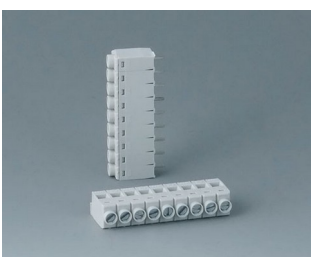
B6606222
Plug header, block 5.08
PA 6 (UL 94 V-0)



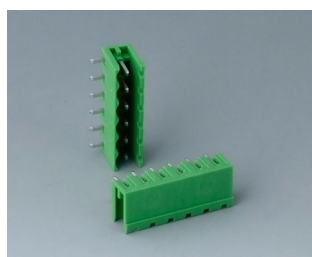
B6606223
Plug header, block 5.08
PA 6 (UL 94 V-0)



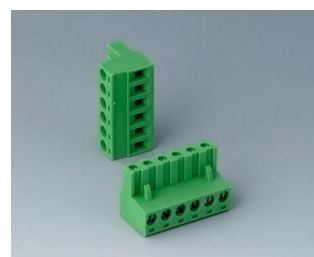
B6607111
Terminal block, block 5.0
PA 68 (UL 94 V-0)



B6608111
Terminal block, block 5.0
PA 68 (UL 94 V-0)



B6608222
Plug header, block 5.08
PA 68 (UL 94 V-0)



B6608223
Plug header, block 5.08
PA 68 (UL 94 V-0)

RAILTEC B

Accessory "terminal guards"



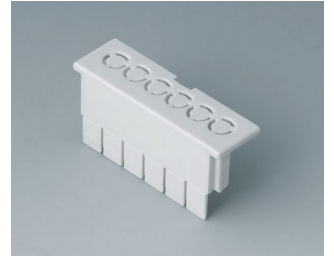
B6607140
Terminal guards, flat
PC (UL 94 V-0)
light grey



B6607141
Terminal guards, flat
PC (UL 94 V-0)
light grey



B6607142
Terminal guards, flat
PC (UL 94 V-0)
light grey



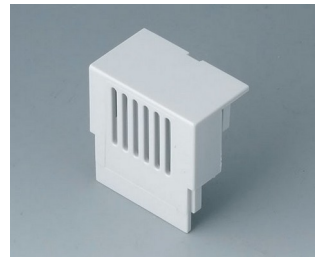
B6607143
Terminal guards, flat
PC (UL 94 V-0)
light grey



B6607145
KNX Cover, flat
PC (UL 94 V-0)
light grey



B6607160
Terminal guards, high
PC (UL 94 V-0)
light grey



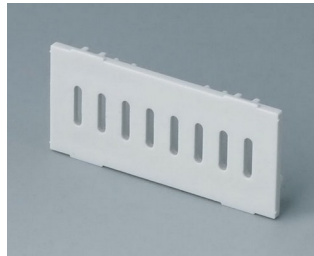
B6607161
Terminal guards, high
PC (UL 94 V-0)
light grey



B6607162
Terminal guards, high
PC (UL 94 V-0)
light grey



B6607163
Terminal guards, high
PC (UL 94 V-0)
light grey



B6607191
Partition plate
PC (UL 94 V-0)
light grey



B6608140
Terminal guards, flat
PC (UL 94 V-0)
light grey



B6608141
Terminal guards, flat
PC (UL 94 V-0)
light grey



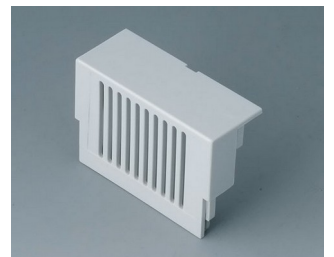
B6608142
Terminal guards, flat
PC (UL 94 V-0)
light grey



B6608143
Terminal guards, flat
PC (UL 94 V-0)
light grey



B6608160
Terminal guards, high
PC (UL 94 V-0)
light grey



B6608161
Terminal guards, high
PC (UL 94 V-0)
light grey

RAILTEC B



B6608162
Terminal guards, high
PC (UL 94 V-0)
light grey



B6608163
Terminal guards, high
PC (UL 94 V-0)
light grey



B6608191
Partition plate
PC (UL 94 V-0)
light grey

Accessory "screws"



A0305031
Self-tapping screws 2.5 x 6 mm
(PZ1)

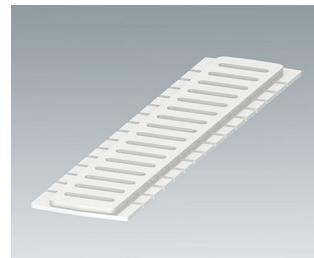
Accessory



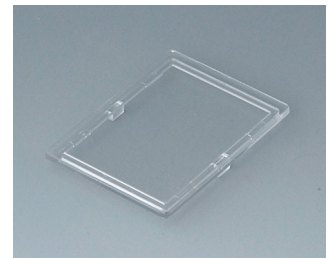
B6522801
Front panel
PC (UL 94 V-0)
light grey RAL 7035



B6522811
Side panel closed
PC (UL 94 V-0)
light grey RAL 7035



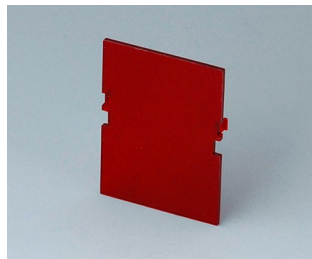
B6522821
Side panel with ventilation slots
PC (UL 94 V-0)
light grey RAL 7035



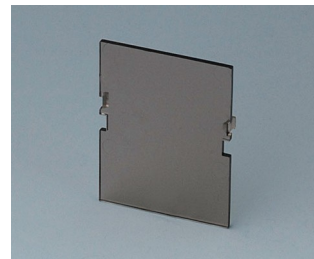
B6601100
Lid, 2 modules
PC (UL 94 V-0)
transparent



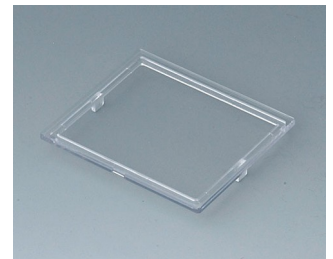
B6601180
Front panel, 2 modules, Vers. VI
PC (UL 94 V-0)
light grey
32x42mm



B6601480
Front panel, 2 modules, Vers. VI
PC (UL 94 V-0)
red transparent
32x42mm



B6601580
Front panel, 2 modules, Vers. VI
PC (UL 94 V-0)
smoked glass
32x42mm



B6602100
Lid, 3 modules
PC (UL 94 V-0)
transparent

RAILTEC B



B6602180
Front panel, 3 modules, Vers. VI
PC (UL 94 V-0)
light grey
49x42mm



B6602480
Front panel, 3 modules, Vers. VI
PC (UL 94 V-0)
red transparent
49x42mm



B6602580
Front panel, 3 modules, Vers. VI
PC (UL 94 V-0)
smoked glass
42x49mm



B6603100
Lid, 4 modules
PC (UL 94 V-0)
transparent



B6603180
Front panel, 4 modules, Vers. VI
PC (UL 94 V-0)
light grey
67x42mm



B6603480
Front panel, 4 modules, Vers. VI
PC (UL 94 V-0)
red transparent
67x42mm



B6603580
Front panel, 4 modules, Vers. VI
PC (UL 94 V-0)
smoked glass
67x42mm



B6604100
Lid, 6 modules
PC (UL 94 V-0)
transparent



B6604180
Front panel, 6 modules, Vers. VI
PC (UL 94 V-0)
light grey
102x42mm



B6604480
Front panel, 6 modules, Vers. VI
PC (UL 94 V-0)
red transparent
102x42mm



B6604580
Front panel, 6 modules, Vers. VI
PC (UL 94 V-0)
smoked glass
102x42mm



B6605100
Lid, 9 modules
PC (UL 94 V-0)
transparent



B6605180
Front panel, 9 modules, Vers. VI
PC (UL 94 V-0)
light grey
155x42mm



B6605480
Front panel, 9 modules, Vers. VI
PC (UL 94 V-0)
red transparent
155x42mm



B6605580
Front panel, 9 modules, Vers. VI
PC (UL 94 V-0)
smoked glass
155x42mm



B6606100
Lid, 12 modules
PC (UL 94 V-0)
transparent

RAILTEC B



B6606180
Front panel, 12 modules, Vers.
VI
PC (UL 94 V-0)
light grey
206x42mm



B6606480
Front panel, 12 modules, Vers.
VI
PC (UL 94 V-0)
red transparent
206x42mm



B6606580
Front panel, 12 modules, Vers.
VI
PC (UL 94 V-0)
smoked glass
206x42mm

Sujeito à modificações técnicas sem aviso prévio. © de OKW Gehäusesysteme, Buchen/Alemanha.