

# ERGO-CASE 弯形盒

## 弯形电子元件盒

符合人体工程学的 ERGO-CASES 弯形电子元件盒首次实现了舒适佩戴在身体上的功能 - 无论是手臂、胸部或腰部。

- 独特的设计使携带和操作具备优势
- 嵌合佩戴的配件，例如臂带和腰带、带夹、卡夹等等
- 4 种规格，2 种颜色
- 可选带或不带电池：  
附加适配 4 个 AA、1 个 9 V、2 个 9 V (规格 M, L) 电池的电池盒，盒盖卡嵌，如有必要可通过螺钉固定; 规格 S 具备适配 2 个 AAA 电池的固定架
- 带 TPE 中间环的规格 XS 可选无或带窗口用于适配配件，如手链、手带等
- 可选较平或较高的上盖用于安装配置
- 规格 L 可选带半透明 PC 材质或相同主盒材质 ABS 材质的显示面板用于安装更大的具备图形处理能力的显示器
- 端面具备较大的界面终端用表面
- 操作区域凹陷，用于保护膜键盘
- 带保险的隐蔽式墙壁安装; 简单的数据和充电电流传输方式; 接触件作为附件
- 固定柱用于安装电路板和安装组件
- 保护套防冲击和保护表面 (附件，规格 M，较高式)



# ERGO-CASE 弯形盒

## 应用示例

医疗和实验室设备的移动式数据采集和数据传输领域。 休闲和医疗保健领域。 数字通信技术。 存储和销售物流领域。 测量技术。 控制和调节技术。



Datalogger for neuromonitoring



Dynamic pressure measuring between foot and shoe



Fully automatic safety device for the ascent



Ground microphone



Mobile system for treating inner ear ailments



Multipoint with integrated datalogger



Patient display for recumbent ergometers



Therapy unit



Wearable voice amplifier

## 按客户要求修改加工

如何体现您的特殊产品？ 如有需要，我们执行所有必要的修改和精加工，提供组装完毕的机盒。 产品类型用于 Ergo-Case 弯形盒

# ERGO-CASE 弯形盒



机械加工



表面涂渡



图文打印于机盒



激光打印字体



装饰膜



特殊材质



EMC 保护



制备 / 组装

## 类型



**B7000107**  
ERGO-CASE S, flat  
ABS (UL 94 HB)  
off-white RAL 9002  
80x96x32mm  
IP 54 opt.



**B7000109**  
ERGO-CASE S, flat  
ABS (UL 94 HB)  
black RAL 9005  
80x96x32mm  
IP 54 opt.



**B7005107**  
ERGO-CASE S, high  
ABS (UL 94 HB)  
off-white RAL 9002  
80x96x44mm  
IP 54 opt.



**B7005109**  
ERGO-CASE S, high  
ABS (UL 94 HB)  
black RAL 9005  
80x96x44mm  
IP 54 opt.



**B7010107**  
ERGO-CASE M, flat  
ABS (UL 94 HB)  
off-white RAL 9002  
150x100x40mm  
IP 54 opt.



**B7010109**  
ERGO-CASE M, flat  
ABS (UL 94 HB)  
black RAL 9005  
150x100x40mm  
IP 54 opt.



**B7010207**  
ERGO-CASE M, flat  
ABS (UL 94 HB)  
off-white RAL 9002  
150x100x40mm  
IP 54 opt.



**B7010209**  
ERGO-CASE M, flat  
ABS (UL 94 HB)  
black RAL 9005  
150x100x40mm  
IP 54 opt.

# ERGO-CASE 弯形盒



**B7015107**  
ERGO-CASE M, high  
ABS (UL 94 HB)  
off-white RAL 9002  
150x100x55mm  
IP 54 opt.



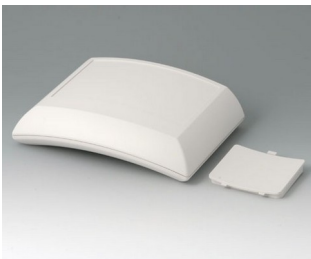
**B7015109**  
ERGO-CASE M, high  
ABS (UL 94 HB)  
black RAL 9005  
150x100x55mm  
IP 54 opt.



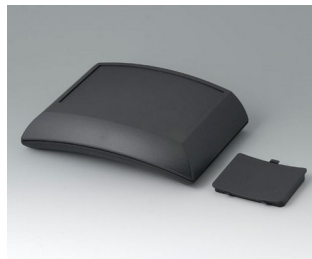
**B7015207**  
ERGO-CASE M, high  
ABS (UL 94 HB)  
off-white RAL 9002  
150x100x55mm  
IP 54 opt.



**B7015209**  
ERGO-CASE M, high  
ABS (UL 94 HB)  
black RAL 9005  
150x100x55mm  
IP 54 opt.



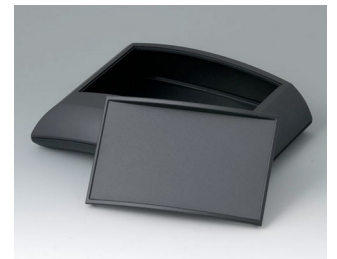
**B7020107**  
ERGO-CASE L, flat  
ABS (UL 94 HB)  
off-white RAL 9002  
150x200x54mm  
IP 54 opt.



**B7020109**  
ERGO-CASE L, flat  
ABS (UL 94 HB)  
black RAL 9005  
150x200x54mm  
IP 54 opt.



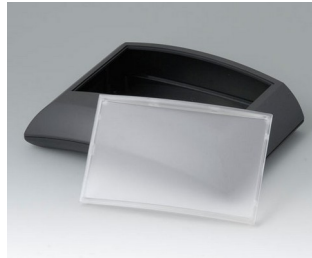
**B7020137**  
ERGO-CASE L, flat  
ABS (UL 94 HB)  
off-white RAL 9002  
150x200x54mm  
IP 40



**B7020139**  
ERGO-CASE L, flat  
ABS (UL 94 HB)  
black RAL 9005  
150x200x54mm  
IP 40



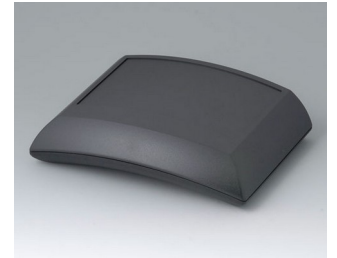
**B7020147**  
ERGO-CASE L, flat  
ABS (UL 94 HB)  
off-white RAL 9002  
150x200x54mm  
IP 40



**B7020149**  
ERGO-CASE L, flat  
ABS (UL 94 HB)  
black RAL 9005  
150x200x54mm  
IP 40



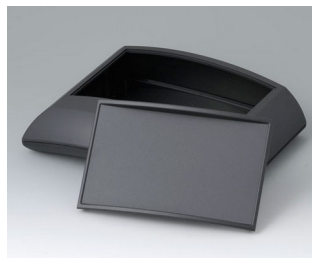
**B7020207**  
ERGO-CASE L, flat  
ABS (UL 94 HB)  
off-white RAL 9002  
150x200x54mm  
IP 54 opt.



**B7020209**  
ERGO-CASE L, flat  
ABS (UL 94 HB)  
black RAL 9005  
150x200x54mm  
IP 54 opt.



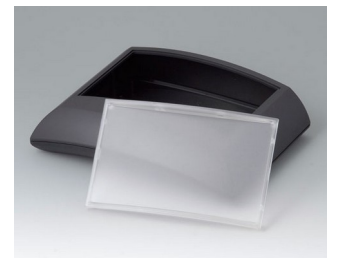
**B7020237**  
ERGO-CASE L, flat  
ABS (UL 94 HB)  
off-white RAL 9002  
150x200x54mm  
IP 40



**B7020239**  
ERGO-CASE L, flat  
ABS (UL 94 HB)  
black RAL 9005  
150x200x54mm  
IP 40



**B7020247**  
ERGO-CASE L, flat  
ABS (UL 94 HB)  
off-white RAL 9002  
150x200x54mm  
IP 40



**B7020249**  
ERGO-CASE L, flat  
ABS (UL 94 HB)  
black RAL 9005  
150x200x54mm  
IP 40

# ERGO-CASE 弯形盒



**B7025107**  
ERGO-CASE L, high  
ABS (UL 94 HB)  
off-white RAL 9002  
150x200x69mm  
IP 54 opt.



**B7025109**  
ERGO-CASE L, high  
ABS (UL 94 HB)  
black RAL 9005  
150x200x69mm  
IP 54 opt.



**B7025137**  
ERGO-CASE L, high  
ABS (UL 94 HB)  
off-white RAL 9002  
150x200x69mm  
IP 40



**B7025139**  
ERGO-CASE L, high  
ABS (UL 94 HB)  
black RAL 9005  
150x200x69mm  
IP 40



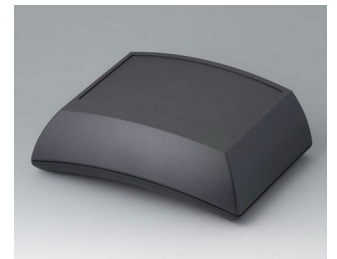
**B7025147**  
ERGO-CASE L, high  
ABS (UL 94 HB)  
off-white RAL 9002  
150x200x69mm  
IP 40



**B7025149**  
ERGO-CASE L, high  
ABS (UL 94 HB)  
black RAL 9005  
150x200x69mm  
IP 40



**B7025207**  
ERGO-CASE L, high  
ABS (UL 94 HB)  
off-white RAL 9002  
150x200x69mm  
IP 54 opt.



**B7025209**  
ERGO-CASE L, high  
ABS (UL 94 HB)  
black RAL 9005  
150x200x69mm  
IP 54 opt.



**B7025237**  
ERGO-CASE L, high  
ABS (UL 94 HB)  
off-white RAL 9002  
150x200x69mm  
IP 40



**B7025239**  
ERGO-CASE L, high  
ABS (UL 94 HB)  
black RAL 9005  
150x200x69mm  
IP 40



**B7025247**  
ERGO-CASE L, high  
ABS (UL 94 HB)  
off-white RAL 9002  
150x200x69mm  
IP 40



**B7025249**  
ERGO-CASE L, high  
ABS (UL 94 HB)  
black RAL 9005  
150x200x69mm  
IP 40



**B7040217**  
ERGO-CASE XS  
ABS (UL 94 HB)  
off-white RAL 9002  
82x56x24mm  
IP 42



**B7040219**  
ERGO-CASE XS  
ABS (UL 94 HB)  
black RAL 9005  
82x56x24mm  
IP 42



**B7040227**  
ERGO-CASE XS  
ABS (UL 94 HB)  
off-white RAL 9002  
82x56x24mm  
IP 42



**B7040229**  
ERGO-CASE XS  
ABS (UL 94 HB)  
black RAL 9005  
82x56x24mm  
IP 42

# ERGO-CASE 弯形盒



**B7040237**  
ERGO-CASE XS  
ABS (UL 94 HB)  
off-white RAL 9002  
82x56x24mm  
IP 42



**B7040239**  
ERGO-CASE XS  
ABS (UL 94 HB)  
black RAL 9005  
82x56x24mm  
IP 42



**B7110028**  
Fastening elements L / M / S  
PA 6  
volcano

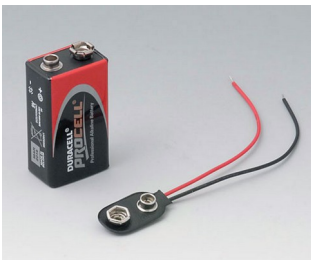


**B7110048**  
Wall suspension elements S / M  
PA 6  
volcano



**B7120048**  
Wall suspension elements L  
PA 6  
volcano

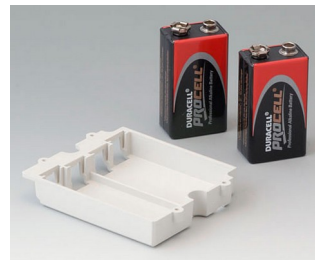
## “电池”配件



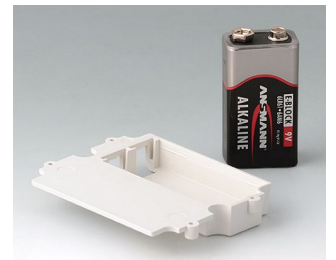
**A9160003**  
Plug-in contact, 1 x 9 V (PP3)



**A9161002**  
Set of battery clips, 2 x 9 V or 4 x AA  
Steel  
tin-plated



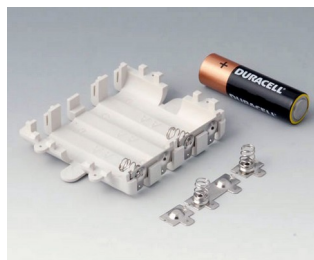
**A9174002**  
Battery compartment, 2 x 9 V  
ABS (UL 94 HB)  
off-white RAL 9002



**A9174003**  
Battery compartment, 1 x 9 V  
ABS (UL 94 HB)  
off-white RAL 9002



**A9174006**  
Set of battery clips, 1 x 9 V  
Steel  
tin-plated



**A9345217**  
Set of battery compartment, 4 x AA  
ABS (UL 94 HB)  
off-white RAL 9002



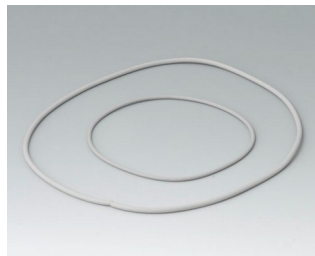
**B7100002**  
Set of battery clips, 2 x AAA

# ERGO-CASE 弯形盒

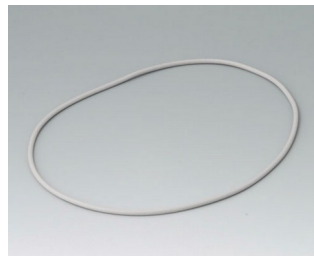
## “保护等级” 附件



**B710005**  
Sealing S



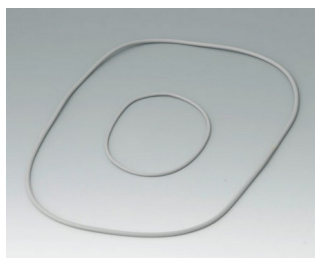
**B7110001**  
Sealing kit M



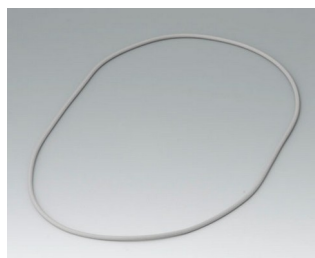
**B7110005**  
Sealing M



**B7115108**  
Protector M, high  
TPE  
volcano

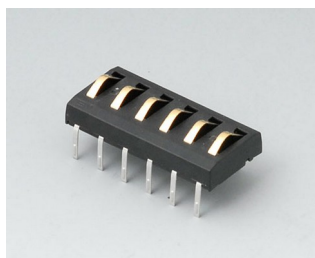


**B7120001**  
Sealing kit L



**B7120005**  
Sealing L

## “挂墙支架” 配件



**A9178007**  
Contacts, male  
gold-plated



**B7110028**  
Fastening elements L / M / S  
PA 6  
volcano



**B7110048**  
Wall suspension elements S / M  
PA 6  
volcano



**B7120048**  
Wall suspension elements L  
PA 6  
volcano

## “手提” 盒附件



**A9100001**  
Ring eyelet  
PA 6  
volcano



**B7110028**  
Fastening elements L / M / S  
PA 6  
volcano



**B7110107**  
Belt / pocket clip  
PA 6  
off-white RAL 9002



**B7110109**  
Belt / pocket clip  
PA 6  
black RAL 9005

# ERGO-CASE 弯形盒



**B7110129**  
Belt strap  
black  
450x35mm



**B7110139**  
Belt strap  
black  
1200x30mm



**B7110149**  
Belt strap  
black  
1500x30mm



**B9100033**  
Wrist strap  
black  
280mm



**B9100063**  
Carrying strap, textile lanyard  
black  
860mm



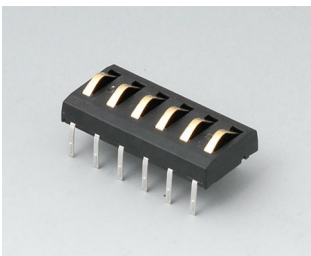
**B9100073**  
Carrying strap, textile lanyard  
black  
914x16mm

## “螺钉” 附件

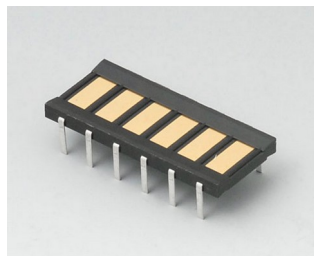


**A0305031**  
Self-tapping screws 2.5 x 6 mm  
(PZ1)

## 附件



**A9178007**  
Contacts, male  
gold-plated



**A9178008**  
Contacts, female  
gold-plated

保留技术更改可能性。© OKW 机盒系统, Buchen/德国。