

INTERFACE-TERMINAL 界面终端盒

多功能电子元件盒

创新的 INTERFACE-TERMINAL 界面终端盒为现代化人机界面提供了便利.

- 美观的设计
- 用户可自己决定是否想将设备指定为移动式或 / 或固定式使用
- 充足的空间用于安装电子元件、图形显示屏或触摸屏 (S: 6,4"/16 cm, M: 8,4"/21 cm, L: 10,4"/26 cm)
- 可选择厚度较低或者厚度较高的底盒用于独特配置、界面接口、电线进出口连接等的安装
- 前面板形式可选择: ABS 材质的上盖和前面板、铝制前面板、保护触摸屏的玻璃面板
根据要求可安装平板电脑
- 防护等级 IP 54: 如使用密封圈 (作为附件)
- 固定柱用于安装电路板和元器件
- 可自行组合的机盒安装系列包含:
 - 移动式 (1)
可选择无或带外装电池盒 (适配 5 个 AA 电池), 包括防电极误接和防扭保护、操作舒适便利的结构、具有扁平样式的手柄、背面的指槽用于安全的握持
 - 带有充电座或扁平墙面支座的机盒 (2)
机盒卡接于插座或扁平挂墙支座上; 简便的数据传输和充电接触件作为附件; 机盒可根据纵向或者横向取向要求进行放置; 底座为电子设备提供充足的空间
 - 倾斜机盒, 螺栓固定式 (3)
操作面提供符合人体工程学的 20 度倾斜; 可纵向或者横向进行安装; 螺栓连接位于非可视面; 底座为接插件、电子设备、布线提供充足的空间。橡胶垫脚为台式机盒提供安全稳固的放置
 - 倾斜卡插台式机盒或墙挂式机盒, 带旋转插锁 (4)
移动部件和固定部件之间的连接方式特别独特; 通过事先设定的卡夹式位于机盒和底座的接口可以让安装变得非常简便; 底座为接插件、电子设备安装以及布线提供充足的空间, 并提供良好的组装机性; 底座可直接安装在墙上; 可移动组件可纵向或者横向进行安装
 - 嵌入式机盒 (5)
对于有特殊要求的建筑物或历史建筑物, 机盒可和谐地安装在墙壁内或与表面安装板形成一体; 更进一步也可将机盒安装在机器或者设备中; 内置安装套件使安装简便

INTERFACE-TERMINAL 界面终端盒



INTERFACE-TERMINAL 界面终端盒

应用示例

独特的应用广泛的类型: 移动式 - 倾斜台式 - 壁挂式 - 嵌入式: 外围设备和界面设备。 办公室。 通信技术。 安全技术。 生物识别。 医药和实验室技术。 健康。 卫生保健。 IoT/IIoT。 自动化。 测量/调节/控制。



Device for bioelectrical patient analysis



Process control for plant Management



Self-monitoring emergency call system



Smart Home Console system



Terminal for personnel time recording



Wireless data logger

按客户要求修改加工

如何体现您的特殊产品？如有需要，我们执行所有必要的修改和精加工，提供组装完毕的机盒。产品类型用于 Interface-Terminal 界面终端盒



机械加工



表面涂渡



图文打印于机盒



激光打印字体



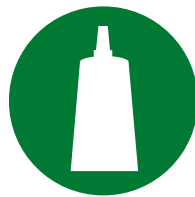
装饰膜



特殊材质



EMC 保护



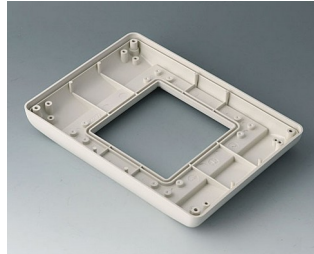
制备 / 组装

INTERFACE-TERMINAL 界面终端盒

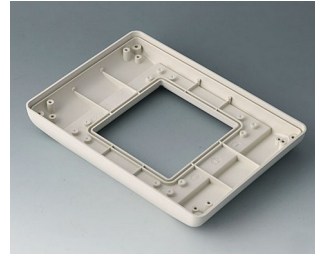
类型



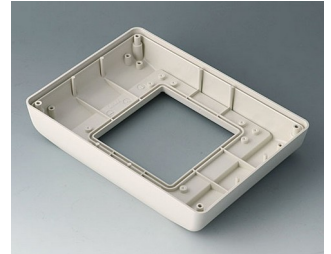
B4042407
Cover S
ABS (UL 94 HB)
off-white RAL 9002
190x135x14mm



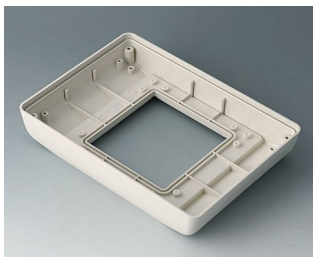
B4042707
Bottom part S flat, version I
ABS (UL 94 HB)
off-white RAL 9002
190x135x24.5mm
IP 54 opt.



B4042717
Bottom part S flat, version II
ABS (UL 94 HB)
off-white RAL 9002
190x135x24.5mm
IP 54 opt.



B4042757
Bottom part S high, version I
ABS (UL 94 HB)
off-white RAL 9002
190x135x34.5mm
IP 54 opt.



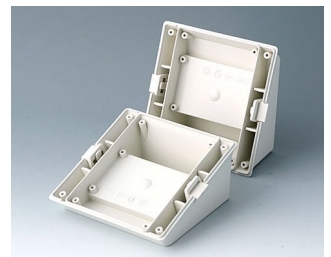
B4042767
Bottom part S high, version II
ABS (UL 94 HB)
off-white RAL 9002
190x135x34.5mm
IP 54 opt.



B4042827
Base S - desk-top -
ABS (UL 94 HB)
off-white RAL 9002
123x123x53mm



B4042837
Base S - charging station, case
deposit mobile
ABS (UL 94 HB)
off-white RAL 9002
123x123x60mm



B4042847
Base S - desk-top/wall -
ABS (UL 94 HB)
off-white RAL 9002
123x123x53mm



B4044407
Cover M
ABS (UL 94 HB)
off-white RAL 9002
225x165x14mm



B4044707
Bottom part M flat, version I
ABS (UL 94 HB)
off-white RAL 9002
225x165x25.5mm
IP 54 opt.



B4044717
Bottom part M flat, version II
ABS (UL 94 HB)
off-white RAL 9002
225x165x25.5mm
IP 54 opt.



B4044757
Bottom part M high, version I
ABS (UL 94 HB)
off-white RAL 9002
225x165x35.5mm
IP 54 opt.

INTERFACE-TERMINAL 界面终端盒



B4044767
Bottom part M high, version II
ABS (UL 94 HB)
off-white RAL 9002
225x165x35.5mm
IP 54 opt.



B4044827
Base M - desk-top -
ABS (UL 94 HB)
off-white RAL 9002
153x153x63mm



B4044837
Base M - charging station, case
deposit mobile
ABS (UL 94 HB)
off-white RAL 9002
153x153x70mm



B4044847
Base M - desk-top/wall -
ABS (UL 94 HB)
off-white RAL 9002
153x153x63mm



B4046407
Cover L
ABS (UL 94 HB)
off-white RAL 9002
275x195x25.5mm



B4046707
Bottom part L flat, version I
ABS (UL 94 HB)
off-white RAL 9002
275x195x26.5mm
IP 54 opt.



B4046717
Bottom part L flat, version II
ABS (UL 94 HB)
off-white RAL 9002
275x195x26.5mm
IP 54 opt.



B4046757
Bottom part L high, version I
ABS (UL 94 HB)
off-white RAL 9002
275x195x36.5mm
IP 54 opt.



B4046767
Bottom part L high, version II
ABS (UL 94 HB)
off-white RAL 9002
275x195x36.5mm
IP 54 opt.



B4046827
Base L - desk-top -
ABS (UL 94 HB)
off-white RAL 9002
183x183x73mm



B4046837
Base L - charging station, case
deposit mobile
ABS (UL 94 HB)
off-white RAL 9002
183x183x80mm



B4046847
Base L - desk-top/wall -
ABS (UL 94 HB)
off-white RAL 9002
183x183x73mm



B4142047
Battery compartment and lid S, 5
x AA
ABS (UL 94 HB)
off-white RAL 9002



B4142106
Front panel S
Aluminium
matt anodised
186.5x131.5x2mm

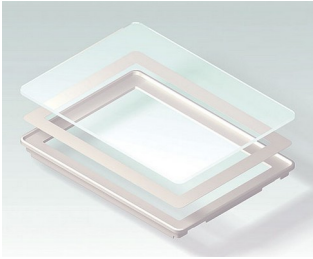


B4142107
Front panel S
ABS (UL 94 HB)
off-white RAL 9002
190.6x135.6x14.5mm



B4142167
Bottom panel with handle recess
S
ABS (UL 94 HB)
off-white RAL 9002

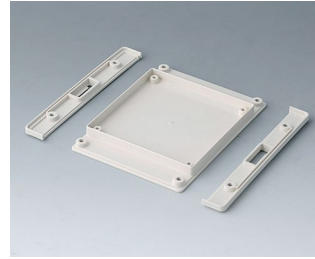
INTERFACE-TERMINAL 界面终端盒



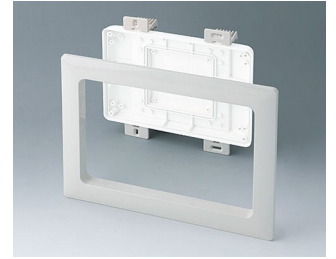
B4142203
Glass panel S
Glass
clear
190.6x135.6x16.7mm



B4142247
Wall suspension element S
ABS (UL 94 HB)
off-white RAL 9002



B4142257
Bottom panel with snap-in strips
S
ABS (UL 94 HB)
off-white RAL 9002



B4142587
Installation assembly kit S, flat
ABS (UL 94 HB)
off-white RAL 9002
234x185mm



B4142597
Installation assembly kit S, high
ABS (UL 94 HB)
off-white RAL 9002
234x185mm



B4144047
Battery compartment and lid M,
5 x AA
ABS (UL 94 HB)
off-white RAL 9002



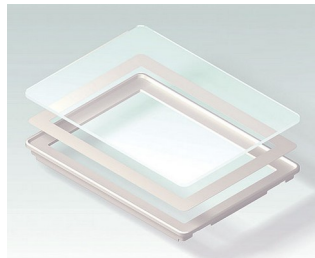
B4144106
Front panel M
Aluminium
matt anodised
221.5x161.5x2mm



B4144107
Front panel M
ABS (UL 94 HB)
off-white RAL 9002
225.6x165.6x15.5mm



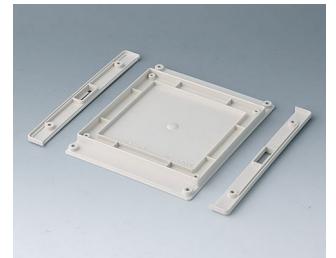
B4144167
Bottom panel with handle recess
M
ABS (UL 94 HB)
off-white RAL 9002



B4144203
Glass panel M
Glass
clear
225.6x165.6x17.7mm



B4144247
Wall suspension element M
ABS (UL 94 HB)
off-white RAL 9002



B4144257
Bottom panel with snap-in strips
M
ABS (UL 94 HB)
off-white RAL 9002



B4144587
Installation assembly kit M, flat
ABS (UL 94 HB)
off-white RAL 9002
272x218mm



B4144597
Installation assembly kit M, high
ABS (UL 94 HB)
off-white RAL 9002
272x218mm



B4146047
Battery compartment and lid L, 5
x AA
ABS (UL 94 HB)
off-white RAL 9002



B4146106
Front panel L
Aluminium
matt anodised
271.5x191.5x2mm

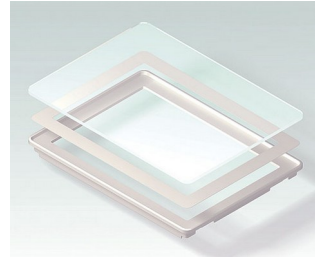
INTERFACE-TERMINAL 界面终端盒



B4146107
Front panel L
ABS (UL 94 HB)
off-white RAL 9002
275.6x195.6x15.5mm



B4146167
Bottom panel with handle recess L
ABS (UL 94 HB)
off-white RAL 9002



B4146203
Glass panel L
Glass
clear
275.6x195.6x17.7mm



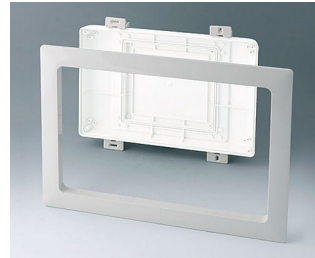
B4146247
Wall suspension element L
ABS (UL 94 HB)
off-white RAL 9002



B4146257
Bottom panel with snap-in strips L
ABS (UL 94 HB)
off-white RAL 9002



B4146587
Installation assembly kit L, flat
ABS (UL 94 HB)
off-white RAL 9002
325x251mm



B4146597
Installation assembly kit L, high
ABS (UL 94 HB)
off-white RAL 9002
325x251mm

系统组件使产品完整



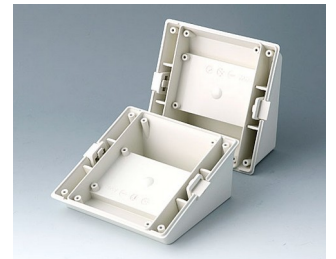
B4042407
Cover S
ABS (UL 94 HB)
off-white RAL 9002
190x135x14mm



B4042827
Base S - desk-top -
ABS (UL 94 HB)
off-white RAL 9002
123x123x53mm



B4042837
Base S - charging station, case
deposit mobile
ABS (UL 94 HB)
off-white RAL 9002
123x123x60mm



B4042847
Base S - desk-top/wall -
ABS (UL 94 HB)
off-white RAL 9002
123x123x53mm

INTERFACE-TERMINAL 界面终端盒



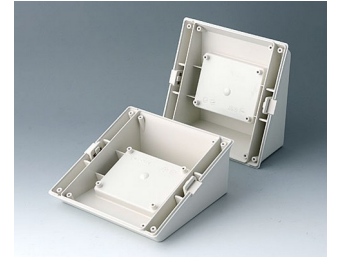
B4044407
Cover M
ABS (UL 94 HB)
off-white RAL 9002
225x165x14mm



B4044827
Base M - desk-top -
ABS (UL 94 HB)
off-white RAL 9002
153x153x63mm



B4044837
Base M - charging station, case
deposit mobile
ABS (UL 94 HB)
off-white RAL 9002
153x153x70mm



B4044847
Base M - desk-top/wall -
ABS (UL 94 HB)
off-white RAL 9002
153x153x63mm



B4046407
Cover L
ABS (UL 94 HB)
off-white RAL 9002
275x195x25.5mm



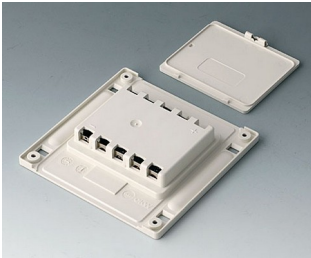
B4046827
Base L - desk-top -
ABS (UL 94 HB)
off-white RAL 9002
183x183x73mm



B4046837
Base L - charging station, case
deposit mobile
ABS (UL 94 HB)
off-white RAL 9002
183x183x80mm



B4046847
Base L - desk-top/wall -
ABS (UL 94 HB)
off-white RAL 9002
183x183x73mm



B4142047
Battery compartment and lid S, 5
x AA
ABS (UL 94 HB)
off-white RAL 9002



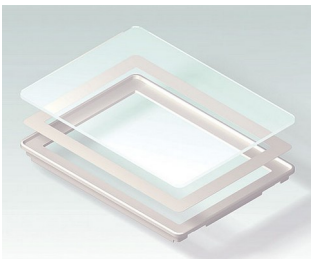
B4142106
Front panel S
Aluminium
matt anodised
186.5x131.5x2mm



B4142107
Front panel S
ABS (UL 94 HB)
off-white RAL 9002
190.6x135.6x14.5mm



B4142167
Bottom panel with handle recess
S
ABS (UL 94 HB)
off-white RAL 9002



B4142203
Glass panel S
Glass
clear
190.6x135.6x16.7mm



B4142247
Wall suspension element S
ABS (UL 94 HB)
off-white RAL 9002



B4142257
Bottom panel with snap-in strips
S
ABS (UL 94 HB)
off-white RAL 9002



B4142587
Installation assembly kit S, flat
ABS (UL 94 HB)
off-white RAL 9002
234x185mm

INTERFACE-TERMINAL 界面终端盒



B4142597
Installation assembly kit S, high
ABS (UL 94 HB)
off-white RAL 9002
234x185mm



B4144047
Battery compartment and lid M,
5 x AA
ABS (UL 94 HB)
off-white RAL 9002



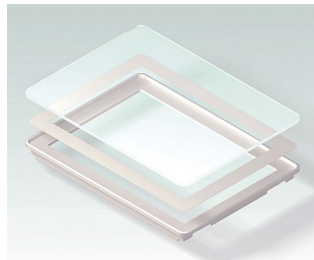
B4144106
Front panel M
Aluminium
matt anodised
221.5x161.5x2mm



B4144107
Front panel M
ABS (UL 94 HB)
off-white RAL 9002
225.6x165.6x15.5mm



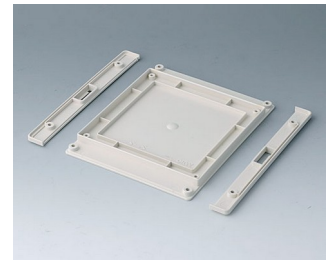
B4144167
Bottom panel with handle recess
M
ABS (UL 94 HB)
off-white RAL 9002



B4144203
Glass panel M
Glass
clear
225.6x165.6x17.7mm



B4144247
Wall suspension element M
ABS (UL 94 HB)
off-white RAL 9002



B4144257
Bottom panel with snap-in strips
M
ABS (UL 94 HB)
off-white RAL 9002



B4144587
Installation assembly kit M, flat
ABS (UL 94 HB)
off-white RAL 9002
272x218mm



B4144597
Installation assembly kit M, high
ABS (UL 94 HB)
off-white RAL 9002
272x218mm



B4146047
Battery compartment and lid L, 5
x AA
ABS (UL 94 HB)
off-white RAL 9002



B4146106
Front panel L
Aluminium
matt anodised
271.5x191.5x2mm



B4146107
Front panel L
ABS (UL 94 HB)
off-white RAL 9002
275.6x195.6x15.5mm



B4146167
Bottom panel with handle recess
L
ABS (UL 94 HB)
off-white RAL 9002



B4146203
Glass panel L
Glass
clear
275.6x195.6x17.7mm

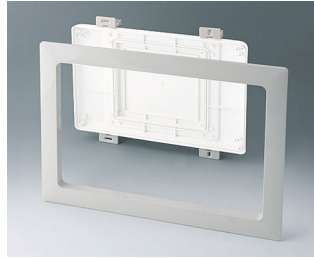


B4146247
Wall suspension element L
ABS (UL 94 HB)
off-white RAL 9002

INTERFACE-TERMINAL 界面终端盒



B4146257
Bottom panel with snap-in strips
L
ABS (UL 94 HB)
off-white RAL 9002

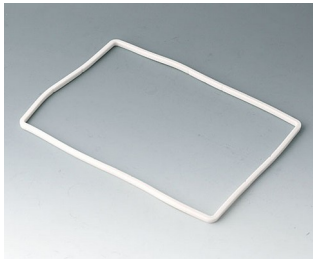


B4146587
Installation assembly kit L, flat
ABS (UL 94 HB)
off-white RAL 9002
325x251mm



B4146597
Installation assembly kit L, high
ABS (UL 94 HB)
off-white RAL 9002
325x251mm

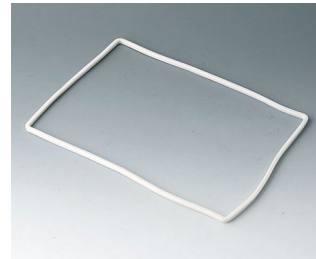
“保护等级” 附件



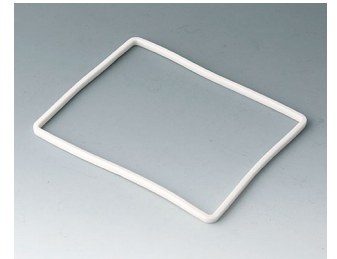
B4142005
Sealing S (bottom part - front
design)
TPE



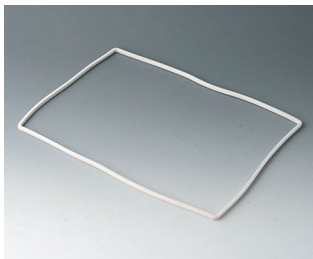
B4142006
Sealing S (bottom part -
base/bot. panel/bat. comp...)
TPE



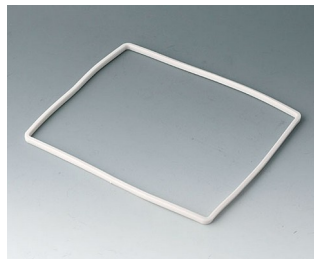
B4144005
Sealing M (bottom part - front
design)
TPE



B4144006
Sealing M (bottom part -
base/bot. panel/bat. comp...)
TPE

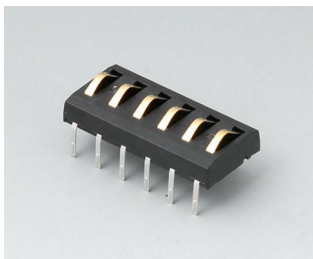


B4146005
Sealing L (bottom part - front
design)
TPE

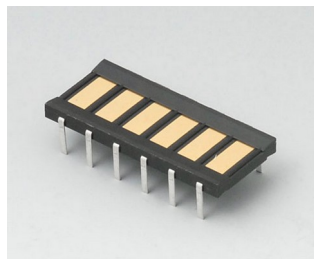


B4146006
Sealing L (bottom part -
base/bot. panel/bat. comp...)
TPE

附件



A9178007
Contacts, male
gold-plated



A9178008
Contacts, female
gold-plated

保留技术更改可能性。 © OKW 机盒系统, Buchen/德国。