

DATEC-TERMINAL 数据采集终端盒

用于运行数据采集的机盒

DATEC-TERMINAL 数据采集终端盒具备独特的设计，以满足现场操作数据采集（BDE）的要求。

- 具备符合人体工程学的 20° 倾斜操作面
- 适合用于桌面和墙壁应用
- 配备标准化插件和通读系统
- 4 种规格，2 种型号
- 规格 M 和 L 带另设的接线仓; 接线仓无障碍通入
- 简便的零配件安装; 安装部件位于视野之外
- 范围广泛的附件库，具备功能性和灵活性
- 防护等级达 IP 54，在使用罩子或盒盖关闭情况下
- 隐藏式挂墙安装带有拆卸保险装置
- 具备欧型和双欧型电路板的安装可能性 (S, SL, L)
- 具备适配独特功能和接口的平面
- 凹陷的操作区域以保护膜键盘



DATEC-TERMINAL 数据采集终端盒

应用示例

工作场所和机器的数据采集系统。数控技术。门卫控制。对讲机和安保设备。医疗技术。保健领域。测量技术。控制技术。自动化控制。暖气和空调技术。



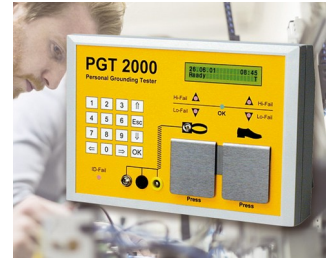
Dental Whitening and laser therapy



Device for monitoring and controlling distillation units



RFID access control readers



System for preventing electrostatic charges



Terminal for time recording, access control and order management



Versatile terminal for leisure facilities

按客户要求修改加工

如何体现您的特殊产品？如有需要，我们执行所有必要的修改和精加工，提供组装完毕的机盒。产品类型用于 Datec-Terminal 数据采集终端盒



机械加工



表面涂渡



图文打印于机盒



激光打印字体



装饰膜



特殊材质



EMC 保护



制备 / 组装

DATEC-TERMINAL 数据采集终端盒

类型



B4013117
DATEC-TERMINAL S
ABS (UL 94 HB)
off-white RAL 9002
130x180x86mm
IP 54 opt.



B4013637
Cover S, convex
ABS (UL 94 HB)
off-white RAL 9002
130x180x28mm



B4016117
DATEC-TERMINAL M, Vers. I
ABS (UL 94 HB)
off-white RAL 9002
168x272x101mm
IP 54 opt.



B4016217
DATEC-TERMINAL M, Vers. II
ABS (UL 94 HB)
off-white RAL 9002
168x272x101mm
IP 54 opt.



B4016317
DATEC-TERMINAL M, Vers. III
ABS (UL 94 HB)
off-white RAL 9002
168x272x101mm
IP 54 opt.



B4016631
Cover M, convex
PC (UL 94 V-0)
transparent
168x220x29mm



B4016637
Cover M, convex
ABS (UL 94 HB)
off-white RAL 9002
168x220x29mm



B4026117
DATEC-TERMINAL SL
ABS (UL 94 HB)
off-white RAL 9002
264x180x86mm
IP 54 opt.



B4026637
Cover SL, convex
ABS (UL 94 HB)
off-white RAL 9002
263x180x28mm



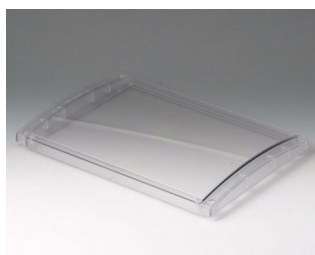
B4030117
DATEC-TERMINAL L, Vers. I
ABS (UL 94 HB)
off-white RAL 9002
302x272x101mm
IP 54 opt.



B4030217
DATEC-TERMINAL L, Vers. II
ABS (UL 94 HB)
off-white RAL 9002
302x272x101mm
IP 54 opt.



B4030317
DATEC-TERMINAL L, Vers. III
ABS (UL 94 HB)
off-white RAL 9002
302x272x101mm
IP 54 opt.



B4030631
Cover L, convex
PC (UL 94 V-0)
transparent
302x220x29mm



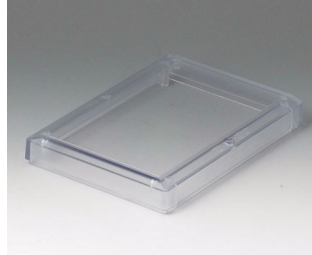
B4030637
Cover L, convex
ABS (UL 94 HB)
off-white RAL 9002
302x220x29mm

DATEC-TERMINAL 数据采集终端盒

需加附件使产品完整



B4013617
Cover S
ABS (UL 94 HB)
off-white RAL 9002
130x180x23mm



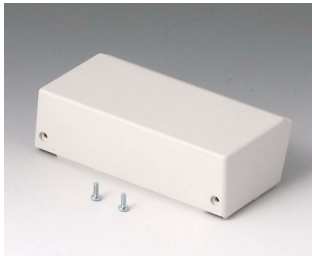
B4013621
Cover S
PC (UL 94 V-0)
transparent
130x180x23mm



B4013637
Cover S, convex
ABS (UL 94 HB)
off-white RAL 9002
130x180x28mm



B4016417
Lid M closed, flat
ABS (UL 94 HB)
off-white RAL 9002
134x62x24mm



B4016457
Lid M closed, high
ABS (UL 94 HB)
off-white RAL 9002
134x67x38mm



B4016617
Cover M, flat
ABS (UL 94 HB)
off-white RAL 9002
168x220x29mm



B4016621
Cover M, flat
PC (UL 94 V-0)
transparent
168x220x29mm



B4016631
Cover M, convex
PC (UL 94 V-0)
transparent
168x220x29mm



B4016637
Cover M, convex
ABS (UL 94 HB)
off-white RAL 9002
168x220x29mm



B4016657
Cover M, high
ABS (UL 94 HB)
off-white RAL 9002
168x220x50mm



B4016671
Cover strip M / L
PC (UL 94 V-0)
transparent



B4016677
Cover strip M / L
ABS (UL 94 HB)
off-white RAL 9002



B4026617
Cover SL
ABS (UL 94 HB)
off-white RAL 9002
264x180x23mm



B4026621
Cover SL
PC (UL 94 V-0)
transparent
264x180x23mm



B4026637
Cover SL, convex
ABS (UL 94 HB)
off-white RAL 9002
263x180x28mm



B4030417
Lid L closed, flat
ABS (UL 94 HB)
off-white RAL 9002
268x62x24mm

DATEC-TERMINAL 数据采集终端盒



B4030617
Cover L, flat
ABS (UL 94 HB)
off-white RAL 9002
302x220x29mm



B4030621
Cover L, flat
PC (UL 94 V-0)
transparent
302x220x29mm



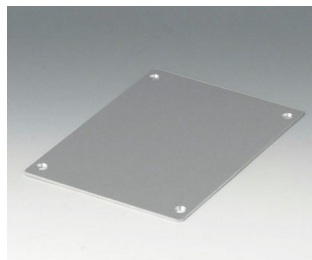
B4030631
Cover L, convex
PC (UL 94 V-0)
transparent
302x220x29mm



B4030637
Cover L, convex
ABS (UL 94 HB)
off-white RAL 9002
302x220x29mm



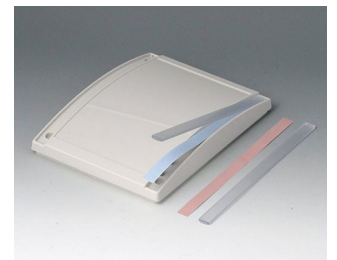
B4030657
Cover L, high
ABS (UL 94 HB)
off-white RAL 9002
302x220x50mm



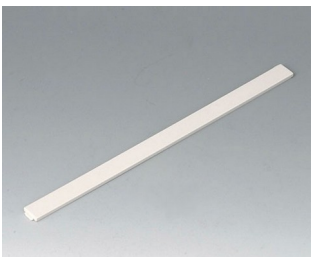
B4113106
Front panel S
Aluminium
matt anodised
125.9x176x2mm



B4113126
Profile plate S
Aluminium
matt anodised
130x180x8mm



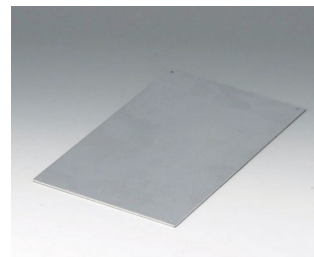
B4113671
Cover strip S / SL
PC (UL 94 V-0)
transparent



B4113677
Cover strip S / SL
ABS (UL 94 HB)
off-white RAL 9002



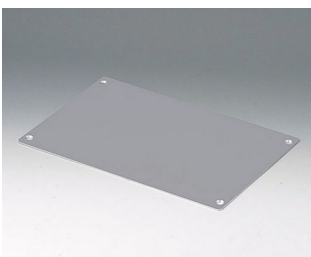
B4116106
Front panel MS
Aluminium
matt anodised
165.4x217.4x2mm



B4116116
Front panel MH
Aluminium
matt anodised
128x209x2mm



B4116126
Profile plate M
Aluminium
matt anodised
168x220x8mm



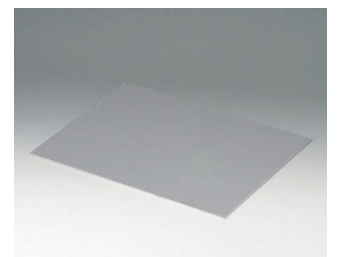
B4126106
Front panel SL
Aluminium
matt anodised
259.4x176x2mm



B4126126
Profile plate SL
Aluminium
matt anodised
263x180x8mm



B4130106
Front panel LS
Aluminium
matt anodised
299.4x217.4x2mm



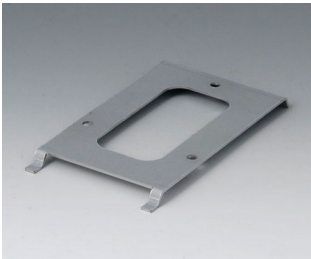
B4130116
Front panel LH
Aluminium
matt anodised
262x209x2mm

DATEC-TERMINAL 数据采集终端盒

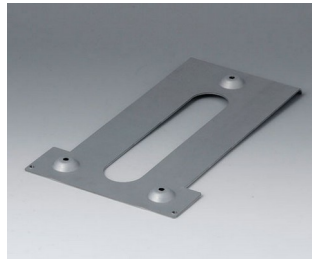


B4130126
Profile plate L
Aluminium
matt anodised
302x220x8mm

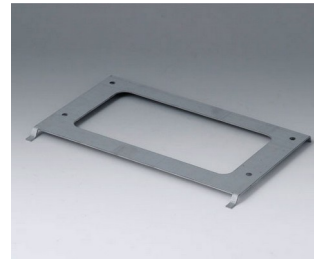
“挂墙支架” 配件



B4113147
Wall suspension element S
Steel
galvanized
79x137x8mm



B4116147
Wall suspension element M
Steel
galvanized
214x126x12mm



B4126147
Wall suspension element SL
Steel
galvanized
210x137x8mm



B4130147
Wall suspension element L
Steel
galvanized
214x260x12mm

保留技术更改可能性。© OKW 机盒系统, Buchen/德国。